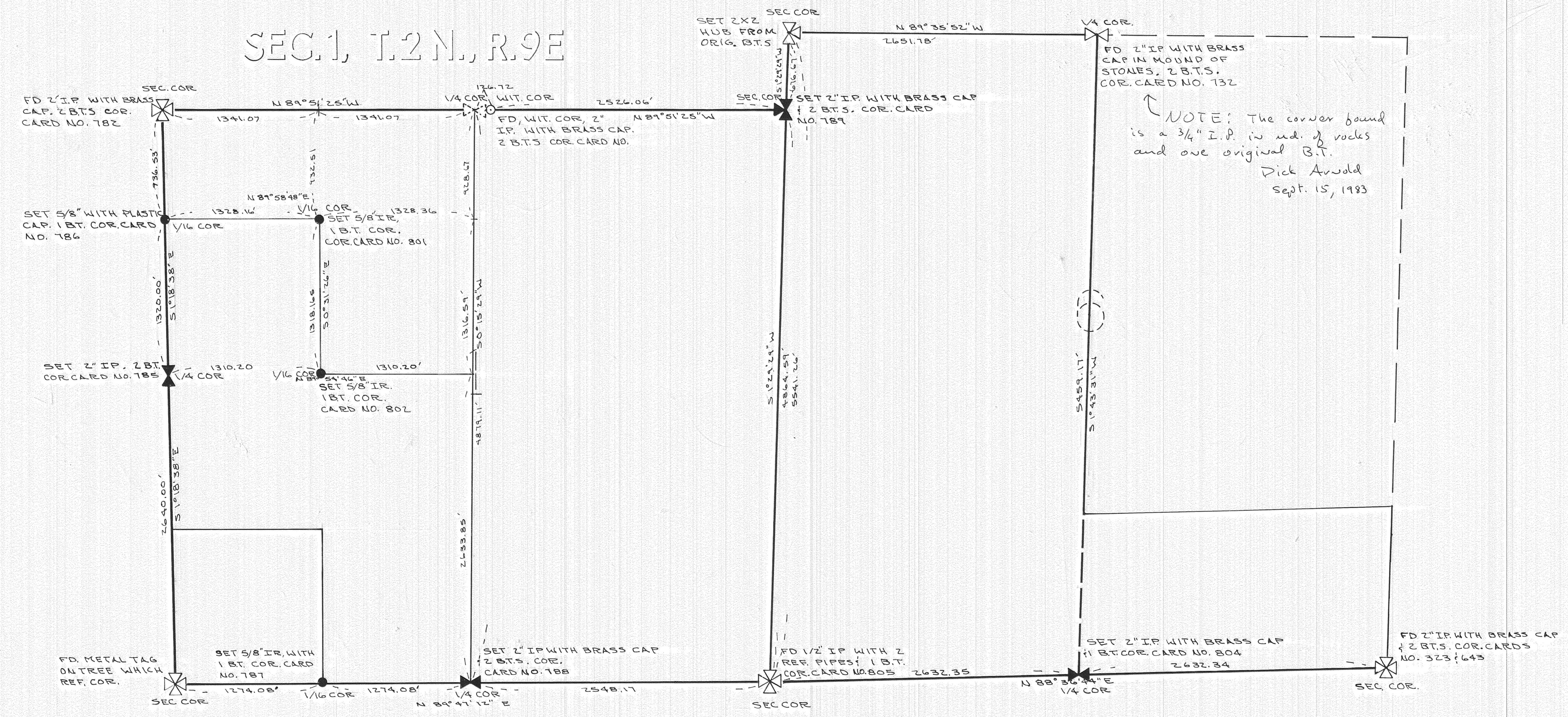


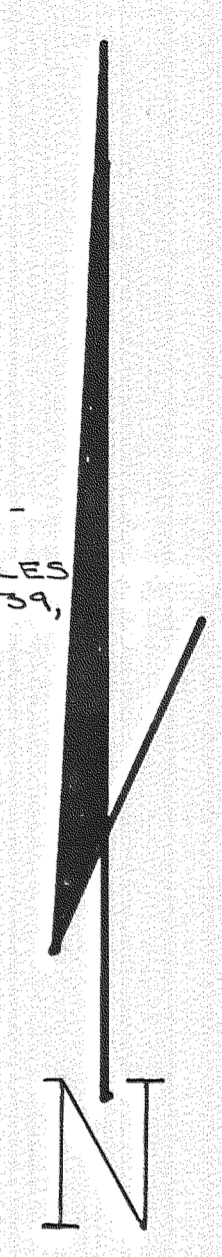
BASIS OF BEARINGS ESTABLISHED IN SURVEY OF THE "BONNEVILLE - THE DALLES LINE" BY S.P.A., APRIL 1939, ALONG THE WEST 1/2 OF THE NORTH LINE OF SEC 6

SEC. 6, T.2N, R.10E.

SEC. 1, T.2N, R.9E



NOTE: The corner found is a 3/4" I.P. in rd. of rocks and one original B.T.
Dick Arnold
Sept. 15, 1983



RESUME

Acting on a request by the Hood River Co. Forest Dept. property corners in Section 1 and 6 above were established. The survey required a breakdown of both sections. The survey commenced by researching all available records. All original General Land Office surveys and resurveys were studied. The Bonneville - The Dalles transmission line Right of Way maps of 1939 were also studied. After thoroughly researching the County Survey Records for other supporting information the field search for existing monuments began. A 2" I.P. with a brass cap, re-monumented by the county, was found at the SE section corner of Section 6; a 1/2" I.P. was found at the SW section corner of Section 6. A 2" I.P. with brass cap in mound of stone along with one original bearing tree was found at the North 1/4 corner of Section 6. A 2x2 hub was set from 2 original bearing trees for the N.W. section corner of Section 6. The blazes were burned but some scribbling still visible. A 2" I.P. with brass cap was found for the witness corner to the North 1/4 of Section 1. The monument was established during a resurvey by the General Land Office at Section 36 T2N, R10E, in 1926. The 1/4 falls in Parkman Creek. Also a 2" I.P. with brass cap was found at the N.W. section corner of Section 1 which was established during the same 1926 Resurvey. The SW section corner of Section 1 was established from a recent bearing tree which had a metal tag on it referencing the corner location. This was used as best available information for that corner. During the research it was found that the west line of Section 1 had never been run and no information was available to proportion the 1/4 corner or the 1/16 corner. The 1/4 corner and the N/16 on the west line were established by measuring the normal distance and all the defining applied to the North 1/16 of the section. The 1/16 section corner of Section 1 was established by intersecting the north line of Section 1 (North line of 1 established by poleing a line from the NW section corner through the 1/4 corner) with the west line of Section 6. This method was used because of the unorthodox manner that Section 1 was originally laid out. I discussed this with the B.L.M. office in Portland and they did not have any other suggestions.

Anthony C. Klein
Acting County Surveyor

FILED
FEB 07 1978
ANTHONY C. KLEIN
COUNTY SURVEYOR
DEPUTY

REGISTERED PROFESSIONAL LAND SURVEYOR
ANTHONY C. KLEIN
932

HOOD RIVER COUNTY SURVEY OFFICE	
SURVEY FOR HOOD RIVER COUNTY FORESTRY DEPARTMENT	
DATE: NOV. 1977	JOB NO. 825
SCALE: 1" = 500'	FILE NO. 1-76
DRAWING: A. KLEIN	SHEET 1 OF 1