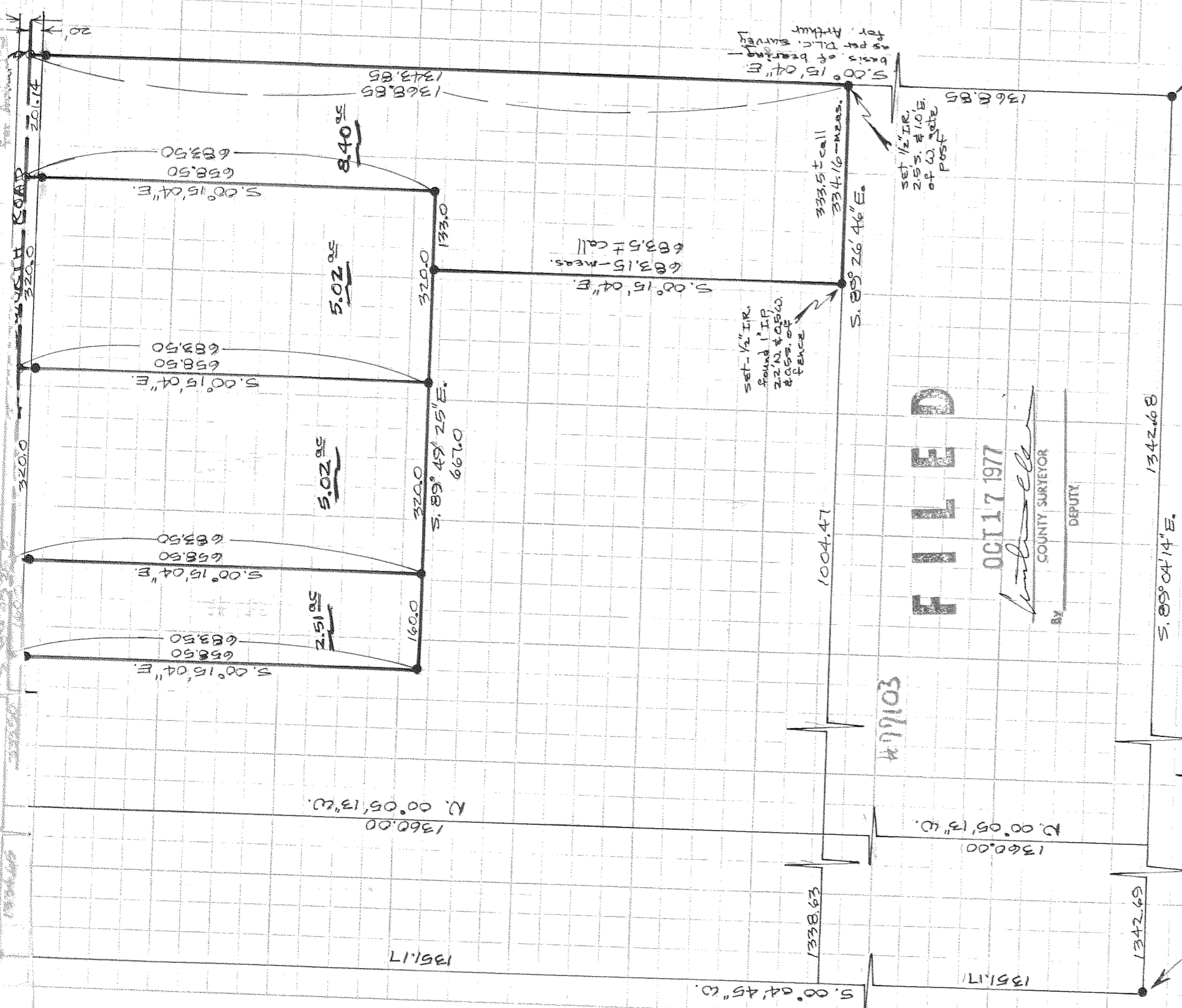


1/4 COR.
SEC. 29
CALC. FROM AS
PER D.L.C. SURVEYED
FOR ADJOURNING

1/4 COR.
SEC. 29
CALC. FROM AS
PER D.L.C. SURVEYED
FOR ADJOURNING



REGISTERED
PROFESSIONAL
LAND SURVEYOR

Danny L. Cron

OREGON
AUGUST 22, 1915
DANNY L. CRON
1028

Oct. 4, 1917

- SCALE - 1" = 200'
- = 1/2" IR. monument
set unless noted
 - = Pk. nail monument
set unless noted

F I L L E D

OCT 17 1977

Danny L. Cron
COUNTY SURVEYOR

By _____
DEPUTY

1/4 COR.
SEC. 29
found 1" IR.
as of record
by D.L.C.
survey for
Arthur

66 SURVEY

FOR - Lester Martin
LOCATION - Parcel of
land located in the
N.E. 1/4 of the S.W. 1/4
of SEC. 29, T.1N, R.10E,
W.M.
HOOD RIVER COUNTY,
OREGON

#77103

#77103

#10-66