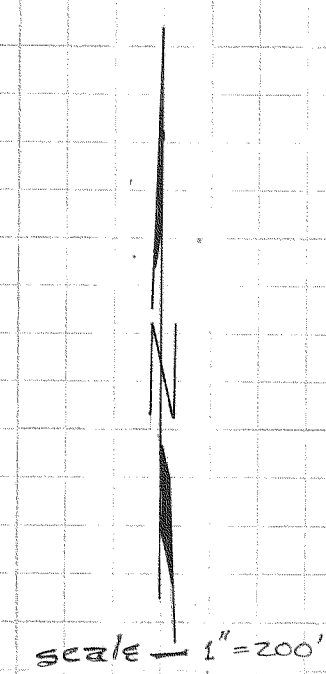
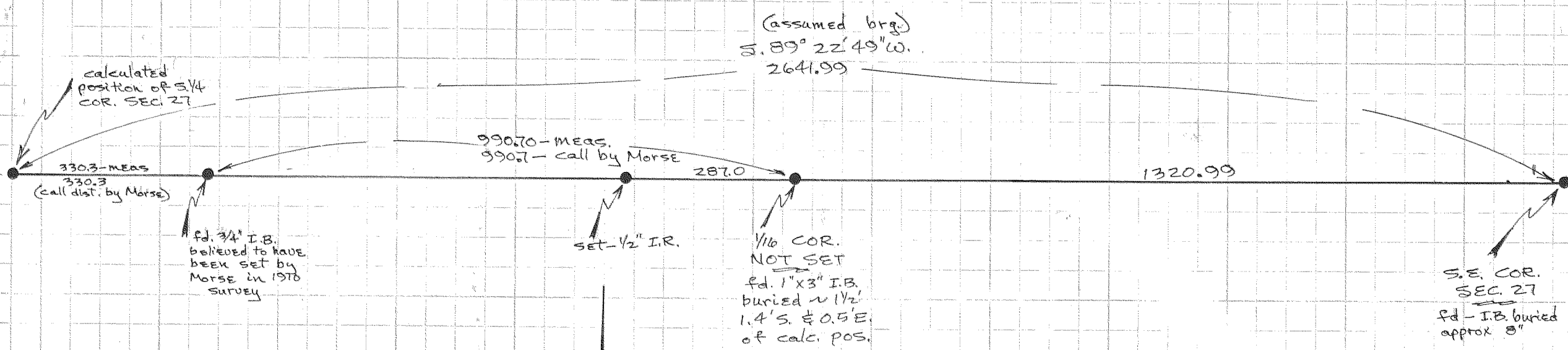


FILED
SEP 20 1977
Danny L. Cron
COUNTY SURVEYOR
DEWELLYN



REGISTERED
PROFESSIONAL
LAND SURVEYOR

Danny L. Cron

OREGON
AUGUST 22, 1975
DANNY L. CRON
1028

Sept. 4, 1977

"SURVEY"
FOR — LEE MOORE
LOCATION — South line
of SEC 27, T. 2N., R. 10E.,
W.M.
HOOD RIVER COUNTY, ORE.

77085

77085

10-53