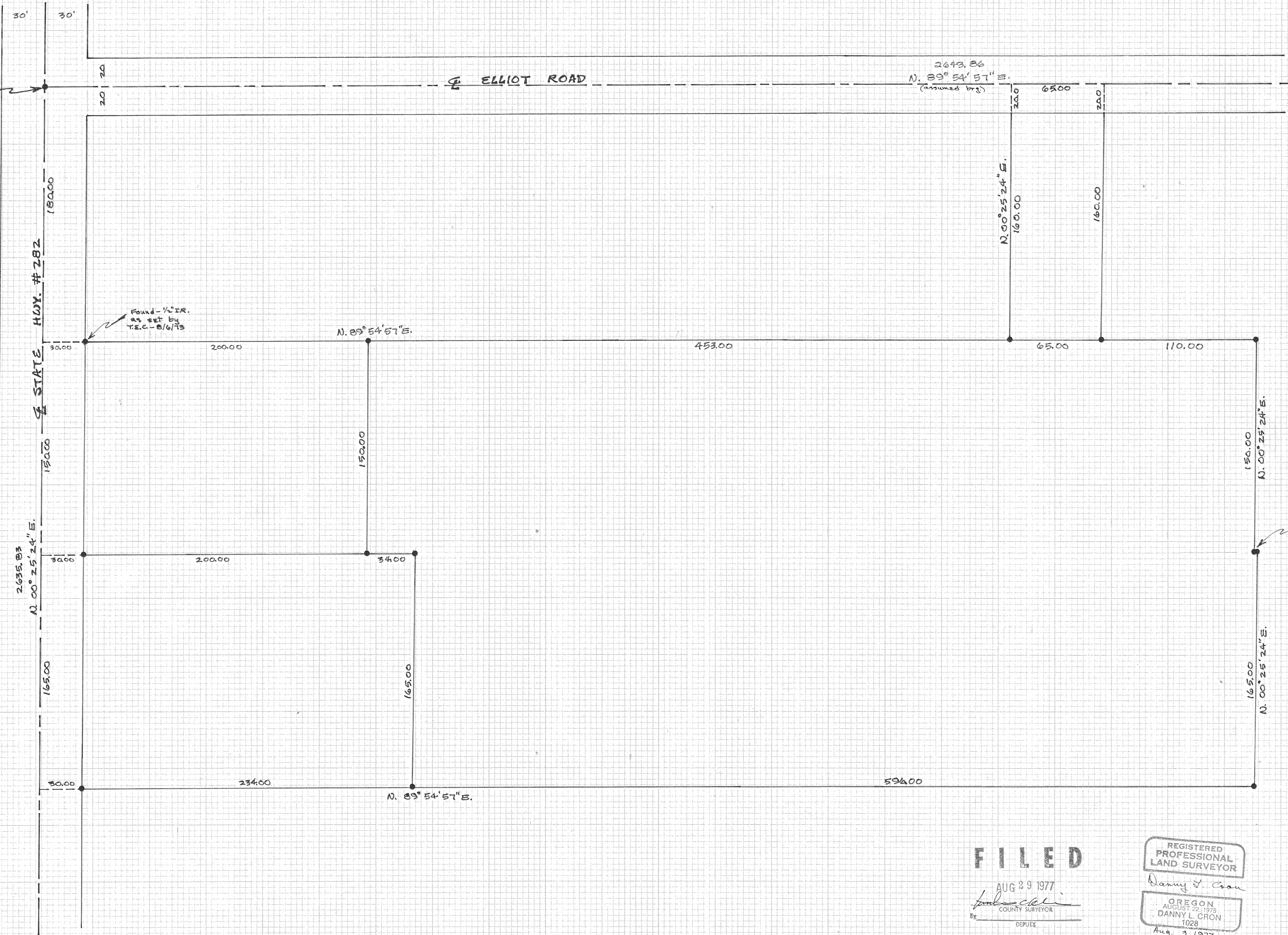


N.W. COR. SEC. 1
Found - spike with punch mark

N. 1/4 COR. SEC. 1
Found - 1/4" I.P.



W. 1/4 COR. SEC. 1
Found - 1" I.P.

2.00
N. 89° 54' 57" E.

SCALE - 1"=40'
● = 5/8" I.R. monument set
UNLESS NOTED

FILED

AUG 29 1977
DANNY L. CRON
COUNTY SURVEYOR
DEPUTY

REGISTERED PROFESSIONAL LAND SURVEYOR
DANNY J. CRON

OREGON
AUGUST 22, 1975
DANNY L. CRON
1028
Aug. 3, 1977

"SURVEY"
FOR - Glenn Taylor
LOCATION - Parcels located in the N.W. 1/4 of SEC. 1, T.2N, R.10E., W.M. HOOD RIVER COUNTY, ORE.

10-130
77074