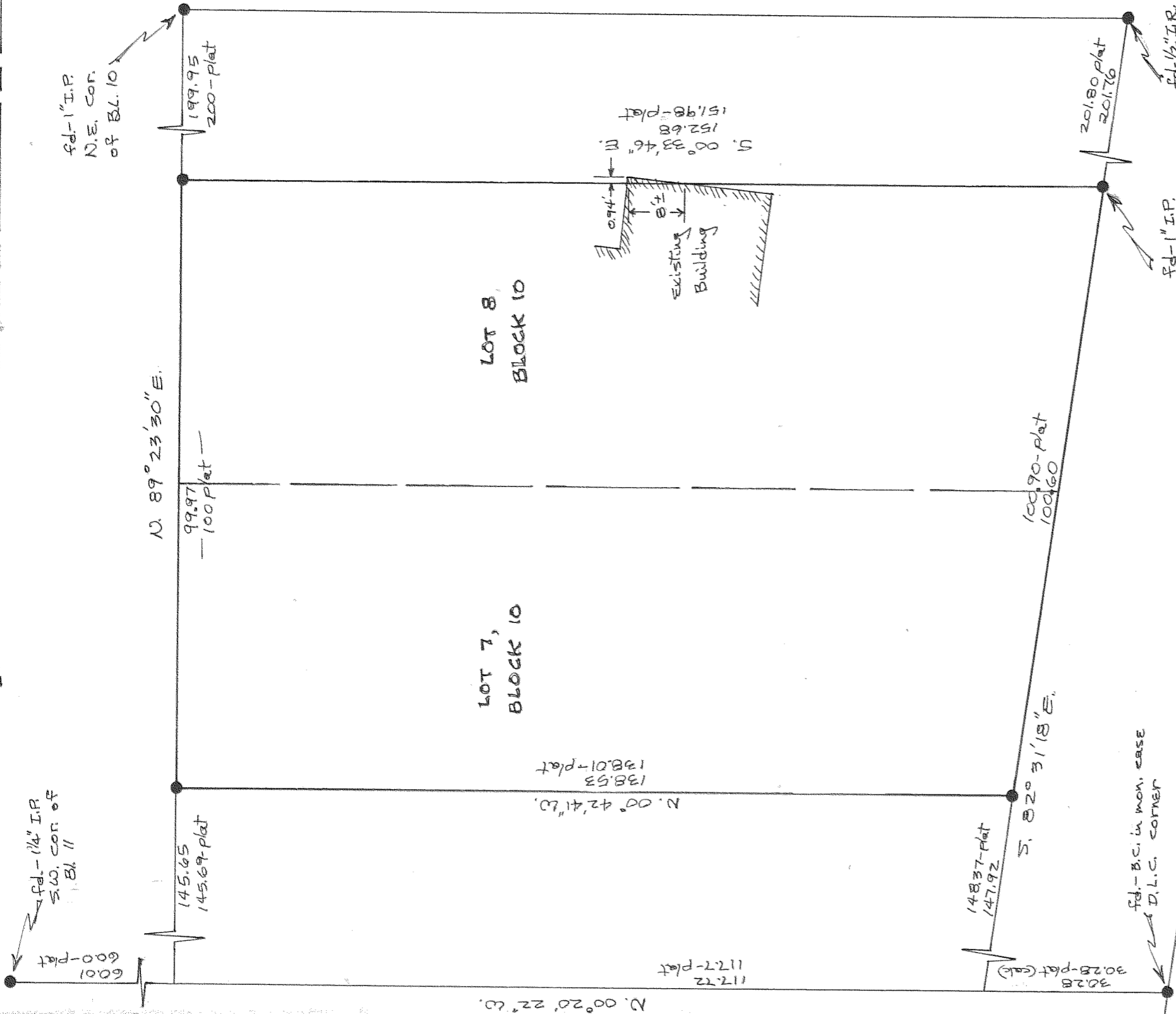


COLUMBIA STREET



CASCADE STREET

Scale - 1" = 20'

● = 5/8" I.R. MONUMENT SET UNLESS NOTED

bearings assumed

FILED

AUG 2 1977

[Signature]
COUNTY SURVEYOR

REGISTERED PROFESSIONAL LAND SURVEYOR

Danny J. Cron

OREGON
AUGUST 22, 1975
DANNY L. CRON
1028

June 20, 1977

"SURVEY" 77062

FOR ERIC RATHARDT
LOCATION - Lots 7 & 8

of Block 10 of Amended
Plat of Idlewild Addition
to the City of Hood
River -

HOOD RIVER COUNTY, ORE.

8-588

3N 10 24DC