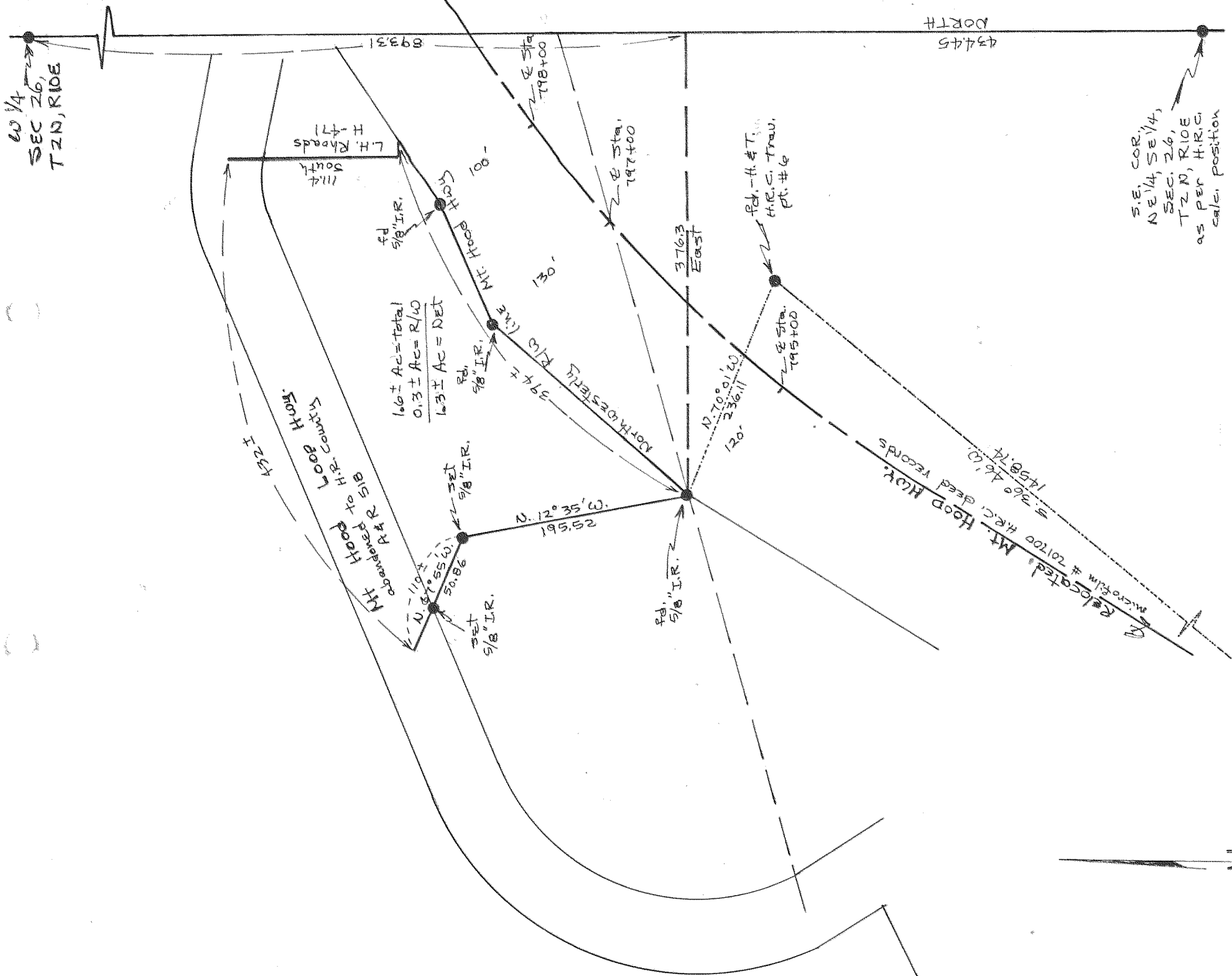


60 1/4
SEC 26,
T2N, R10E



$1.6 \pm \text{Ac} = \text{Total}$
 $0.3 \pm \text{Ac} = \text{R/W}$
 $1.3 \pm \text{Ac} = \text{DET}$

S.E. COR.
 NE 1/4, SE 1/4,
 SEC. 26,
 T2N, R10E
 as per H.R.G.
 calc. position

"SURVEY"

FOR — Dale Holloway

SURVEY REFERENCES —

- 1) Survey by H.R.C. of Stadelman, R.D. 1976
- 2) Survey by G.R. St. Hwy. of Hwy. 35 as per dr'g # 9B-2-12

LOCATION — Parcel located in the N.E. 1/4 of the SE 1/4 of SEC. 26, T2N, R10E, W.M.

HOOP RIVER COUNTY, ORE.

7-422 #77055

REGISTERED
 PROFESSIONAL
 LAND SURVEYOR

Danny L. Cron

OREGON
 AUGUST 22, 1975
 DANNY L. CRON
 1028

May 11, 1977

SCALE

1"=100'

FILED

JUN 22 1977

Ronald J. Merry
 COUNTY CLERK

DEPUTY