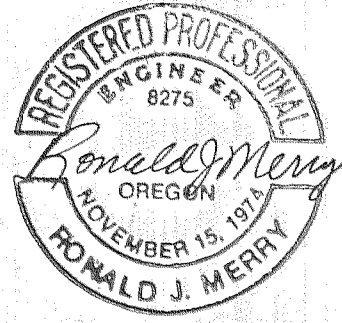


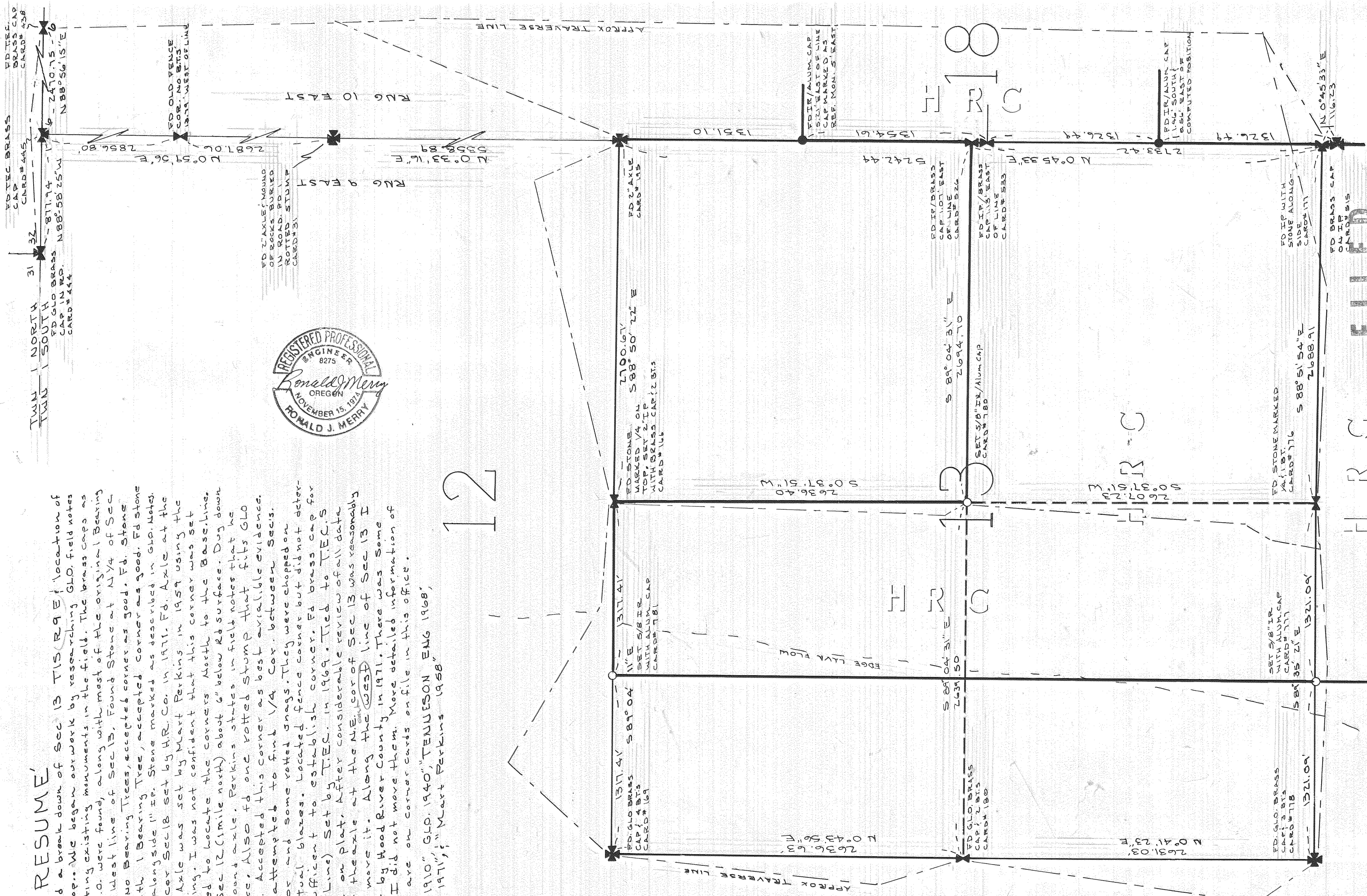
RESUME

The Forestry Dept requested a break down of Sec 13 T15R9E location of all corners of County Prop. We began our work by researching GLO field notes on file in our office and locating existing monuments in the field. The brass caps as set in a 1940 Resurvey by G.L.O. were found, along with most of the original Bearing Trees set in 1910 along the west line of Sec 13. Found Stone at N 1/4 of Sec 13 with 1/4 Marked on top no Bearing Trees, accepted corner as good. Fd. Stone at S 1/4 of Sec 13 along with 1 Bearing Tree, accepted corner as good. Fd Stone at the S.E. cor of Sec 13 along side 1" ip. Stone marked as described in GLO Notes. Also fd brass cap at SW cor Sec 13 set by H.R. Co. in 1911. Fd. Axle at the N.E. cor of Sec 13. This Axle was set by Mart Perkins in 1959 using the Stadia method of surveying. I was not confident that this corner was set accurately so I proceeded to locate the corners North to the Base line. Fd Axle at the NE cor Sec 12 (1 mile north) about 6" below R/S surface. Dug down further and fd. stones around axle. Perkins states in field notes that he fd. mound of stones here. Also fd one rotted stump that fits GLO notes for bearing tree. Accepted this corner as best available evidence. Continued north and attempted to find 1/4 Cor. between Secs. 13 & 14. Found old Fence cor and some rotted gnags. They were chopped on but could not find any actual blazes. Located fence corner but did not determine if evidence was sufficient to establish corner. Fd brass cap for N.E. cor of Sec 1 (Base Line) set by T.E.C. in 1969. Tied to T.E.C.'S 1969 survey as shown on plat. After considerable review of all data and notes I found that the axle at the N.E. cor of Sec 13 was reasonably accurate and I did not move it. Along the West line of Sec 13 I found monuments set by Hood River County in 1911. There was some minor differences but I did not move them. More detailed information of what was found and set are on corner cards on file in this office.

Ref: Surveys by "GLO 1910", GLO 1940, "TENNESON ENG 1968", "Hood River County 1971", "Mart Perkins 1958"



12



BASIS OF BEARING ASSUMED

HOOD RIVER COUNTY SURVEY OFFICE	
SURVEY IN SEC 13, TWP 1 SOUTH, RANGE 9 EAST, WN FOR FORESTRY DEPT	
DATE: April 25, 1977	JOB NO. _____
SCALE: 1" = 50'	FILE NO. 18-76
DRAWING: K Klein	SHEET 1 OF 1

H R C FILED

MAY 10 1977
Ronald J. Merry
COUNTY CLERK
DEPUTY #77046

24

#5-606 #77046