

**FILED**

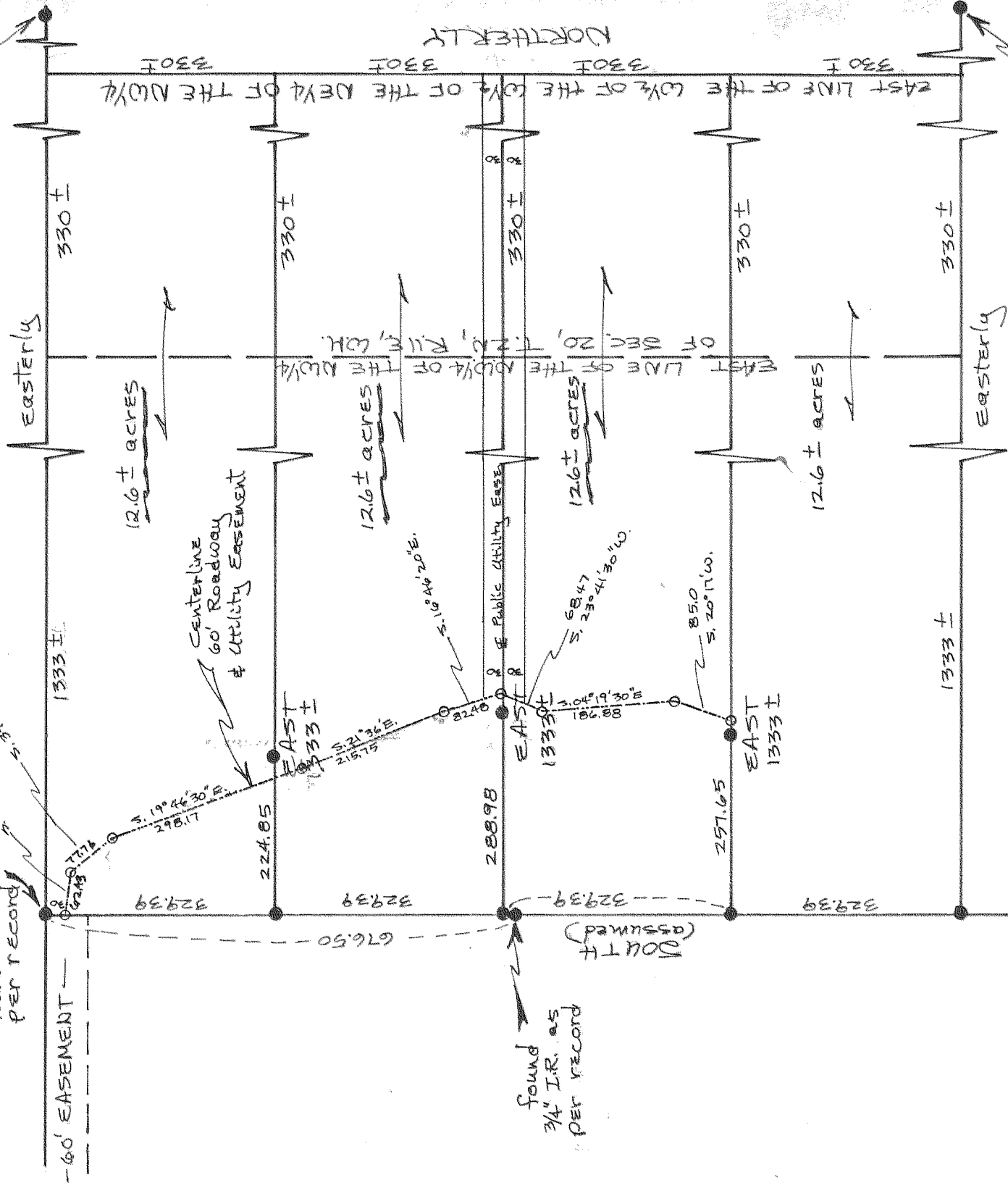
MAR 7 1977

Ronald J. Cron  
COUNTY SURVEYOR  
DEPUTY

N.W. COR. OF  
SEC. 20, T.2N.,  
R.11E., W.M. —  
found stone as  
per record

BY  
"S. 34° 15' 30" E.  
1333 ±

DEPUTY



Assumed  
location of the  
N. 1/4 of SEC. 20

Assumed  
location of the  
Center of SEC. 20

REGISTERED  
PROFESSIONAL  
LAND SURVEYOR

Danny L. Cron

OREGON  
AUGUST 22, 1975  
DANNY L. CRON  
1028

2/24/77

\* 6/8/77

"SURVEY"

FOR — Ernest Glaser Inc.

SURVEY REFERENCES —

Survey by D.L.C. 10/17/75  
for Brown

LOCATION — Parcel located

in the N.W. 1/4 of SEC. 20,  
T.2N., R.11E., W.M.

HOOD RIVER COUNTY, ORE.

SCALE 1" = 200'

● = 5/8" I.R. MONUMENT SET  
UNLESS NOTED

--- = 60' Roadway & Utility Easement

\* REVISIONS — 60' Roadway & Utility Easement & 60' Pub. Utility Easement

7-657

# 77024

E. 1/4 COR.  
OF SEC. 20 —  
location of record  
accepted

found  
3/4" I.R. as  
per record

(assumed)  
SOUTH

12.6 ± ACRES

12.6 ± ACRES

12.6 ± ACRES

12.6 ± ACRES

EAST LINE OF THE CORNER OF THE NW 1/4 OF THE NW 1/4 OF SEC. 20, T.2N., R.11E., W.M.

EAST LINE OF THE CORNER OF THE NW 1/4 OF THE NW 1/4 OF SEC. 20, T.2N., R.11E., W.M.

NORTHERLY

Easterly

Easterly