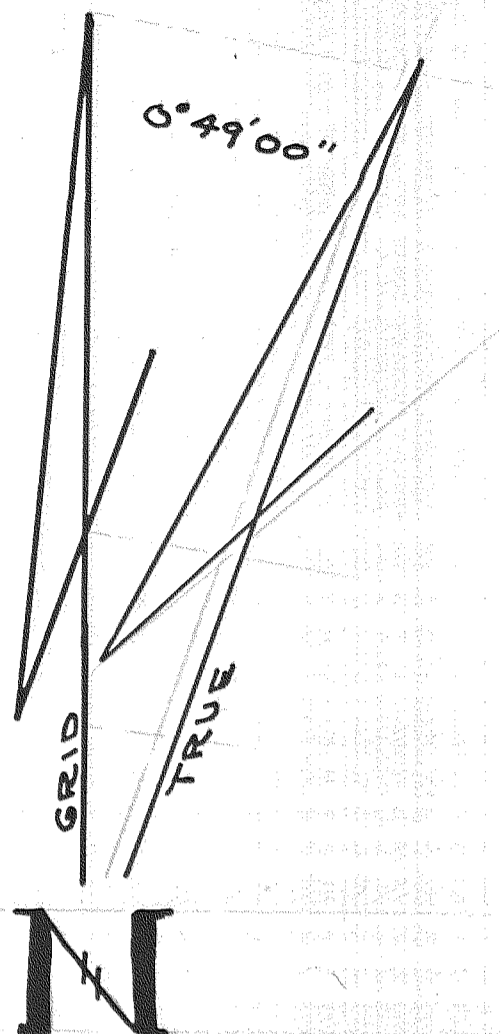


SURVEY IN T1N, R9E, W1M.



AVERAGE COMBINED GRID FACTOR .99979593

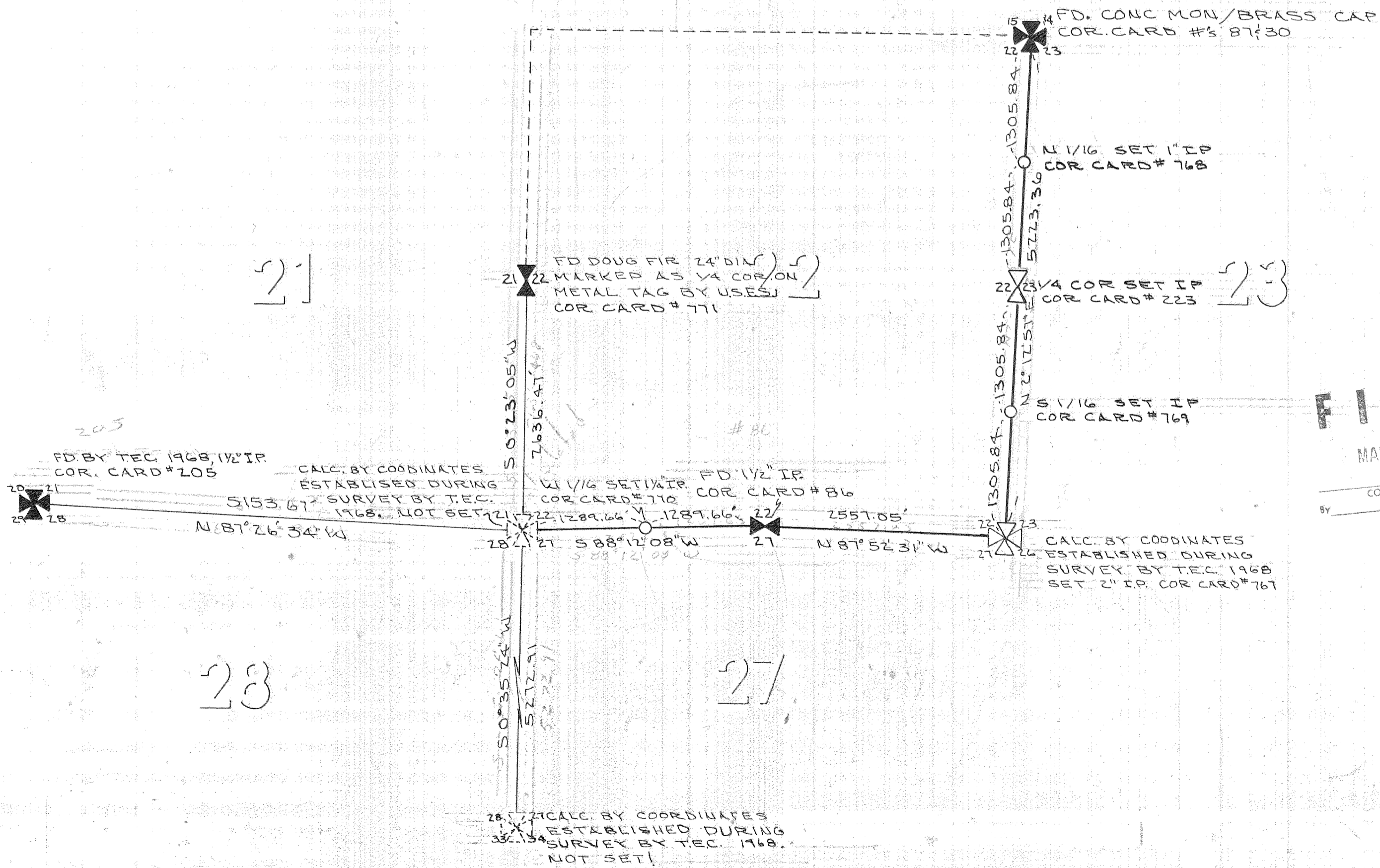
ON BASIS OF BEARING
OREGON COORDINATE SYSTEM -
NORTH ZONE

RESUME

REF: TENNESON ENGINEERING CORP.
SURVEY FOR HOOD RIVER CO.
1968 W.O.#3137
REF: HOOD RIVER CO. SURVEY 1976
JOB#1375 1976
REF: FIELD BOOKS # 1-77; 2-77
CREW: LYNN LESSELYOUNG - CHAINMAN
DICK ARNOLD - INSTRUMENTMAN
ANTHONY KLEIN - PARTY CHIEF

WORK BEGAN ON DEC OF 1976. THE ABOVE REFERENCES WERE REVIEWED AND ALL CORNERS NEEDED LOCATED IN THE FIELD.

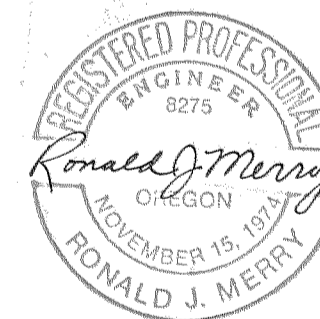
WE BEGAN OUR FIELD TRAVERSE FROM C34-14 (A POINT ON THE TRAV. FOR SEC 34 REF. SURVEY JOB # 13-75) AND TIED TO THE SECTION CORNER COMMON TO SEC. 15, 14, 22, 23; THE 1/4 CORNER COMMON TO SEC 21; 22. THE 1/4 COR. & SEC COR. TIED TO WERE COORDINATED BY T.E.C. REF. SURVEY W.O.# 3137. WE ADJUSTED OUR TRAVERSES TO T.E.C. COORDINATES AND CALCULATED THE CORNERS TO BE SET. RAN A SECONDARY TRAVERSE FROM THE COR. COMMON TO SECS 14, 15, 22, 23, TO A POINT ON OUR MAIN TRAVERSE NEAR THE COR. COMMON TO SEC 22, 23, 26, 27, AND SET THE CORNERS FOR THE EAST LINE OF SEC. 22. SET THE SE COR. OF 22; THE 1/16 COR. BETWEEN 22; 27 FROM MAIN TRAVERSE. ALL CORNERS FOUND & SET DURING THE COURSE OF THIS SURVEY ARE SHOWN; CORNER CARDS MADE & FILED. WORK COMPLETED MARCH 1977



FILED

MAR 7 1977

By _____
COUNTY SURVEYOR
DEPUTY



HOOD RIVER COUNTY SURVEY OFFICE	
SURVEY FOR HOOD RIVER COUNTY FORESTRY DEPT.	
DATE: MAR 8, 1977	JOB NO. 17-76
SCALE: 1" = 100'	FILE NO.
DRAWING: A. KLEIN	SHEET: 1 OF 1