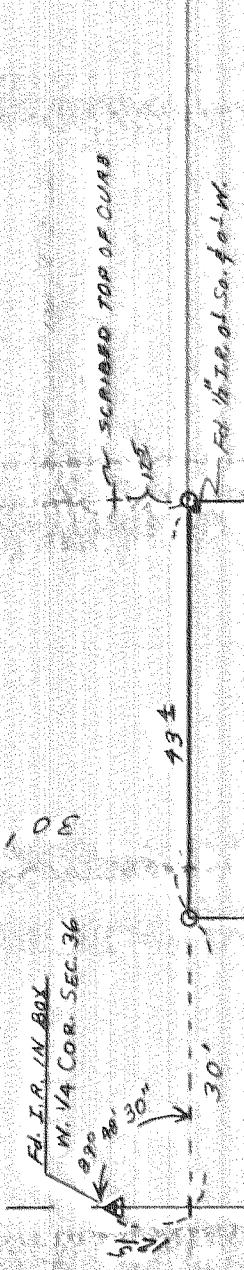


WILSON STREET



FA I.R. IN BOX
M. 1/4 COR. SEC. 36

30'
30'

SCRIPED TOP OF CURB

43.4

FA 1/2 COR. 1/4 S. 1/4 M.



SURVEY OF

M 99.5 OF LOT 1, BLOCK 1
E.B. CLARK'S FIRST ADD.
TO THE CITY OF HOOD RIVER,
HOOD RIVER CO. OREGON
T. 3 N., R. 10. E. W. M.

LEGEND

O = 50T-50\"/>

12TH STREET

99.5

99.5

43.4
NEW CONCRETE

43.4

REGISTERED
PROFESSIONAL
LAND SURVEYOR

Larry D. Bishop

OREGON
JULY 11, 1964
LARRY D. BISHOP
8.9.6

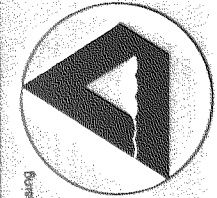
FILED

FEB 24 1977

Ronald G. Mery
COUNTY SURVEYOR
DEPUTY

35
2 1
36
\"/>

DATE	2/2/77	DRAWN	J.A.B.
SURVEY	L.D.B.	DESIGN	
CHECKED	L.B.	APPROVED	L.B.
SCALE	1" = 20'		
PROJECT NO.	76276		



Engineering Surveying Data Processing

Dielschneider Associates Inc

No. 8 Fourth St.
Hood River, Oregon 97031

SURVEY FOR

HOWARD BUCHANAN



8-615
77012