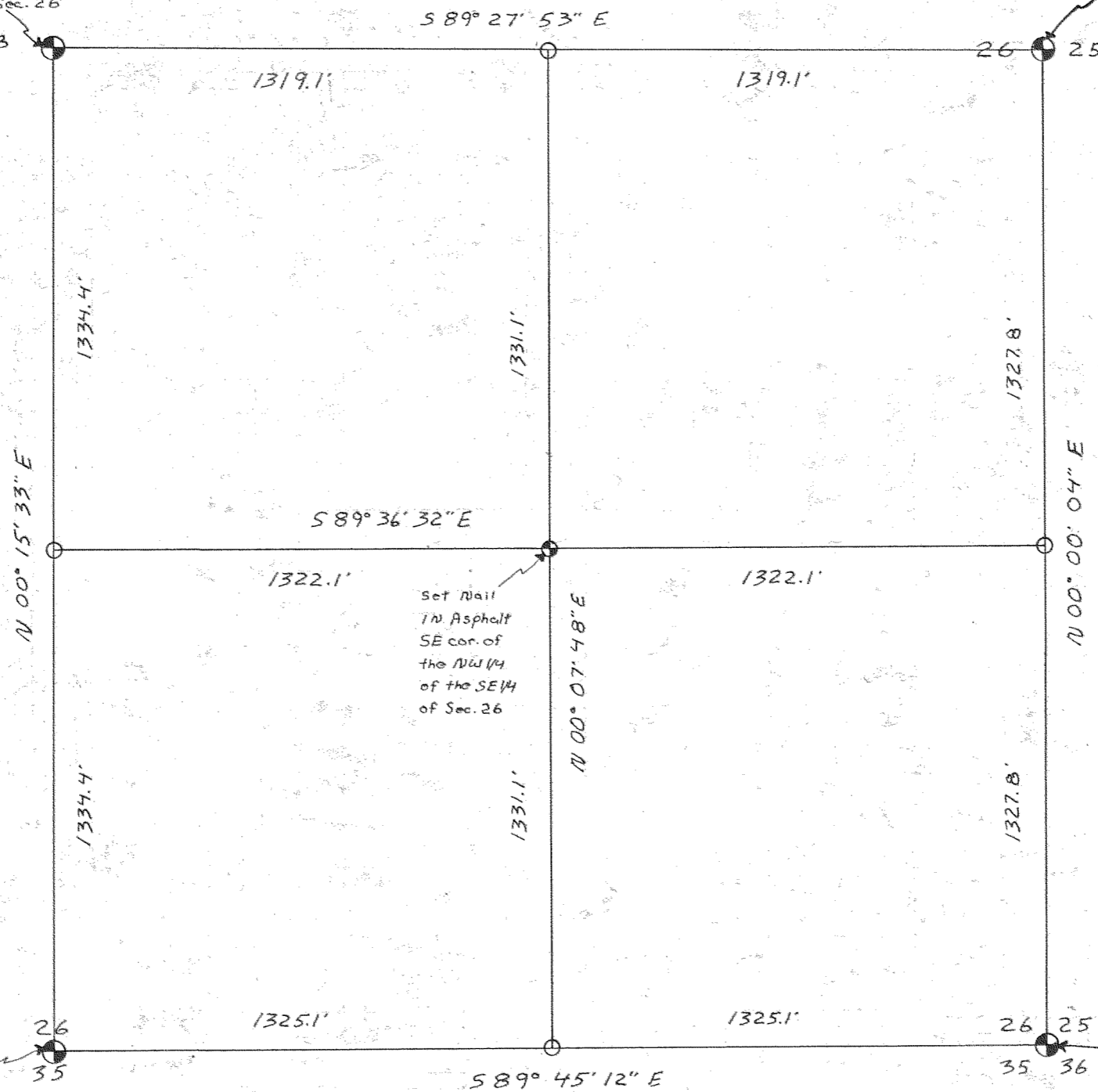


Fd. Iron Rod with Brass Cap
 C. 1/4 Corner Sec. 26
 SEE H.R.C.
 Cor. Card # 543

Fd. 2" I.P.
 SEE H.R.C.
 Cor. CARD # 550



Survey of the SE 1/4 of
 Sec. 26, T 2 N, R 10 E, W.M.
 for the
 Right of Way Location
 of
 Stadelman Road

Scale 1" = 400'
 August 1975
 Drawn by RLS
 Surveyed by Hood River County

Note: The bearings for this survey
 are assumed. All angles were
 measured with a Wild T-2E
 and all distances were measured
 with a Hewlett-Packard 3805.

For further information refer
 to Hood River County Survey Records.

- ⊕ Corner Found
- ⊙ 1/16 Corner Computed and Set
- 1/16 Corner Computed

Fd. 1 1/2" I.P.
 SEE H.R.C.
 Cor. Card 553

Fd. 1" I.P.
 SEE H.R.C.
 Cor. Card 588

FILED

DEB 24 1977
Ronald J. Meny
 COUNTY CLERK
 By _____
 DEPUTY

77004

ok - D.C.