

SURVEY LOCATED  
IN  
SE 1/4, ~~SW~~ 1/4, SECTION 26  
TWP. 2 N., R. 10 E., U. M.  
HOOD RIVER COUNTY, ORE.

BASIS OF BEARINGS:  
N. A. NEWTON SURVEY  
DATED 12-20-1971  
COUNTY REG. NO. 7203

No. 8 Fourth Street  
Hood River, Oregon 97031

Dielschneider Associates Inc  
Engineering Surveying Data Processing

- ⊕ FOUND MONUMENTS
- ⊙ SET 3/8" X 30" IRON RODS
- ⊕ CORNERS COMPUTED BUT NOT SET

**FILED**

DEC 28 1976

*Ronald J. Merry*  
COUNTY SURVEYOR

DEPUTY

REGISTERED  
PROFESSIONAL  
LAND SURVEYOR

*Anthony C. Klein*

OREGON  
JULY 17, 1970  
ANTHONY C. KLEIN  
932

Date 11-30-1976

Drawn R. GAYLORD

Survey J. P. R.

Design

Checked ACK.

Approved

Scale 1" = 200'

Project No. 72273

Sheet No.

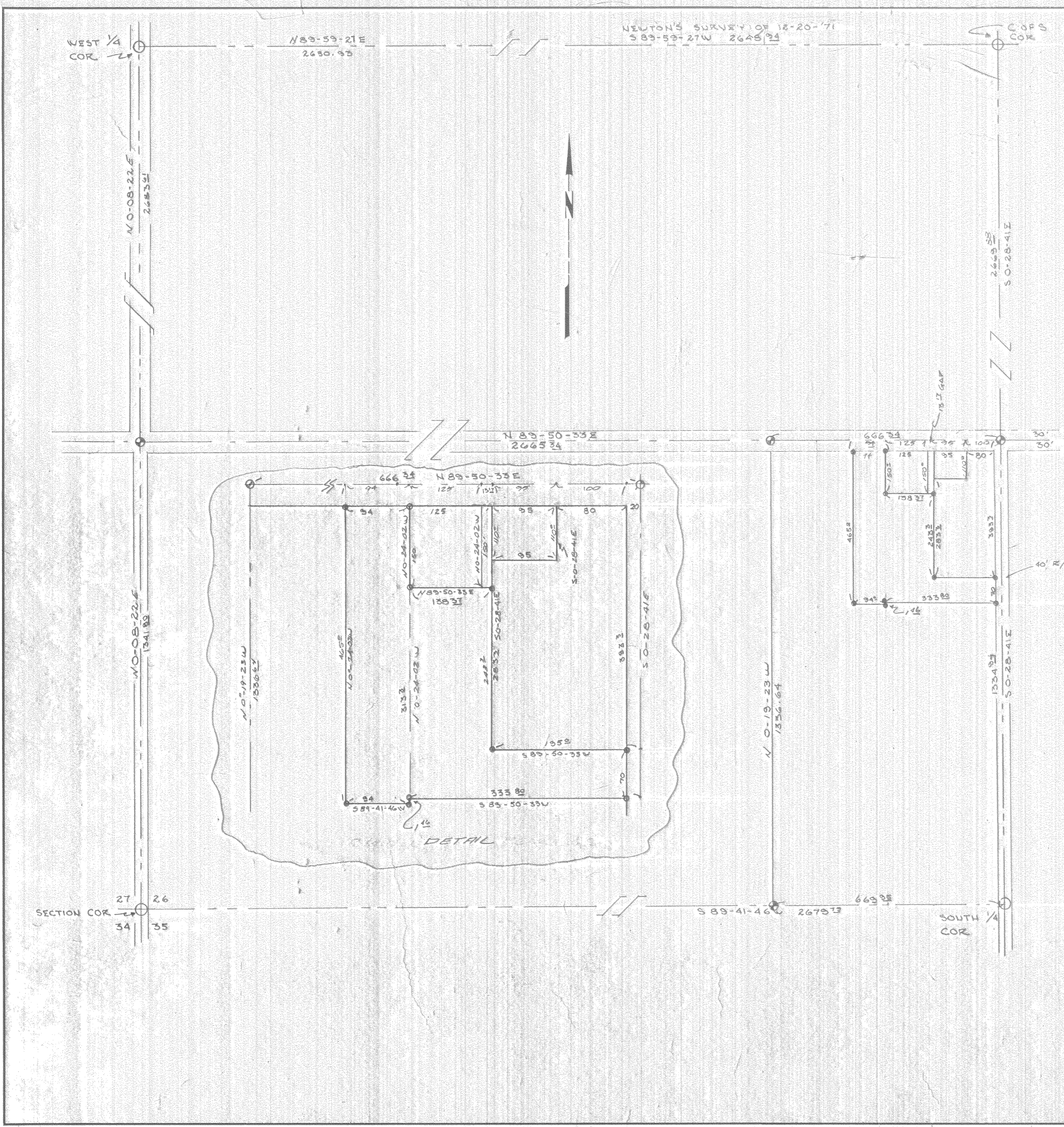
**1**

SURVEY FOR  
HOOD RIVER ELECTRIC COOP.

# 76977

7-446

K&E ALAMAR



WEST 1/4  
COR

CORNER

SOUTH 1/4  
COR

NEWTON'S SURVEY OF 12-20-71  
S 89-53-27W 2648.24

N 89-59-21E  
2650.95

N 0-08-22E  
2653.51

N 0-08-22E  
341.89

SECTION COR  
27 26  
34 35

S 89-41-46E  
2675.13

2659.52  
S 0-28-41E

1334.37  
S 0-28-41E

N 89-50-33E  
2668.92

N 89-50-33E  
666.34

N 0-19-23W  
1236.61

N 0-24-02W  
465E

N 0-24-02W  
160

N 0-24-02W  
313E

N 0-24-02W  
138.31

N 0-24-02W  
244.2

N 0-24-02W  
265.2

N 0-24-02W  
333.89

N 0-24-02W  
589-50-33W

N 0-24-02W  
34

N 0-24-02W  
589-41-46W

N 0-24-02W  
34

N 0-24-02W  
34

N 0-24-02W  
34

N 0-24-02W  
34

N 0-24-02W  
34

N 0-24-02W  
34

N 0-24-02W  
34

N 0-24-02W  
34

N 0-24-02W  
34

N 0-24-02W  
34

N 0-24-02W  
34

N 0-24-02W  
34

N 0-24-02W  
34

N 0-24-02W  
34

N 0-24-02W  
34

N 0-24-02W  
34

N 0-24-02W  
34

N 0-24-02W  
34