

76074

Survey of Sec 11
Twp. 1N, Rng. 10E, W.M.

By Hood River County

April, 1976

1" = 600'

Drawn by RLS

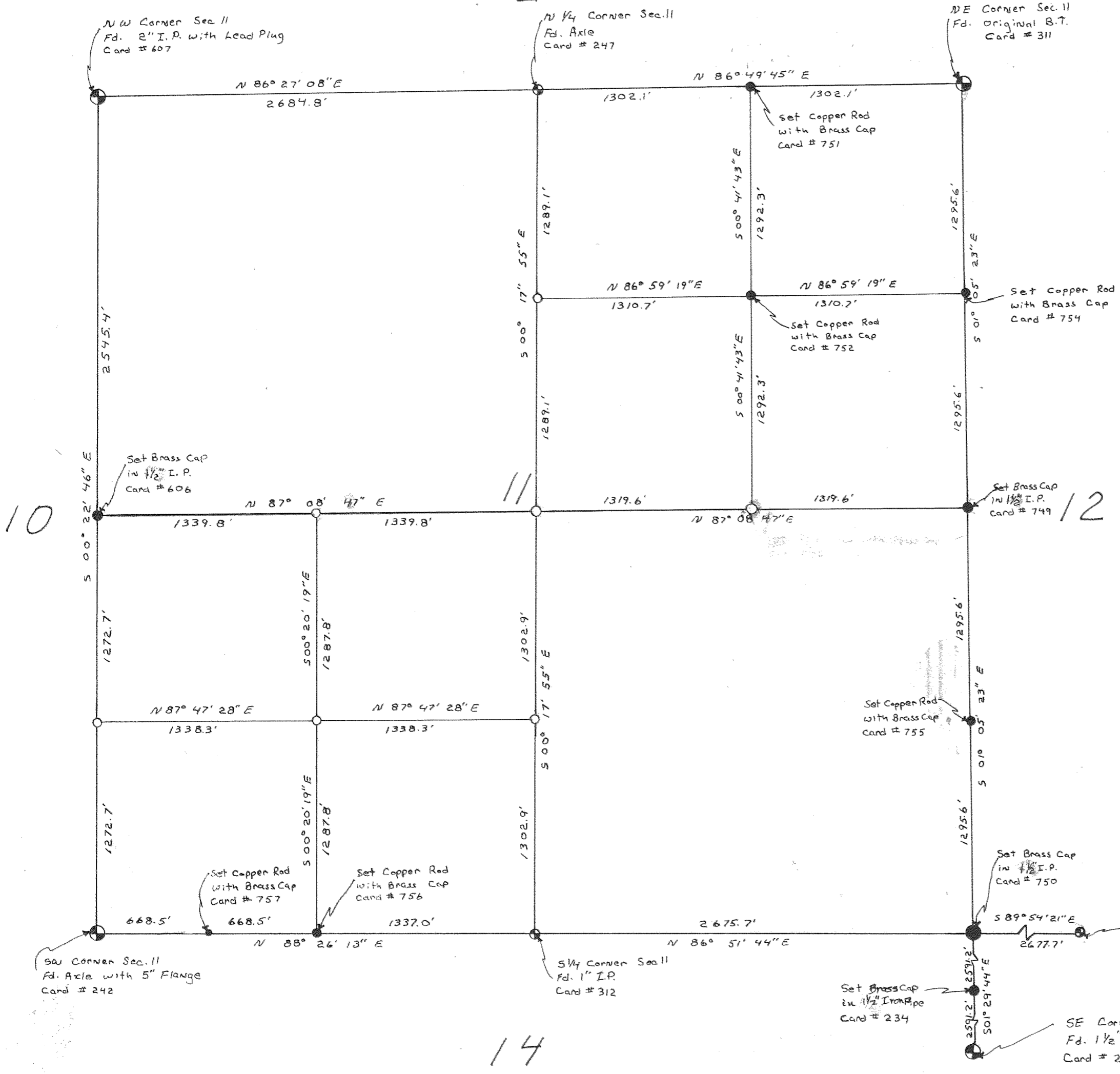


76074
FILED
DEC 18 1976
Ronald J. Meury
COUNTY SURVEYOR
DEPUTY

- Corner Found
- Computed Corner Set
- Computed Corner Not Set

Note: All bearings are assumed. All angles were measured with a Wild T-2E and all distances were measured with a Hewlett-Packard 3805.

For further information refer to Hood River County Survey Records and Corner card files.



6-164
76074