

Preliminary Plat
 Tract B
 Mt Hood Estates
 SW 1/4 Section 4
 T1S R10E

TRUE
 BEAR-SOLAR

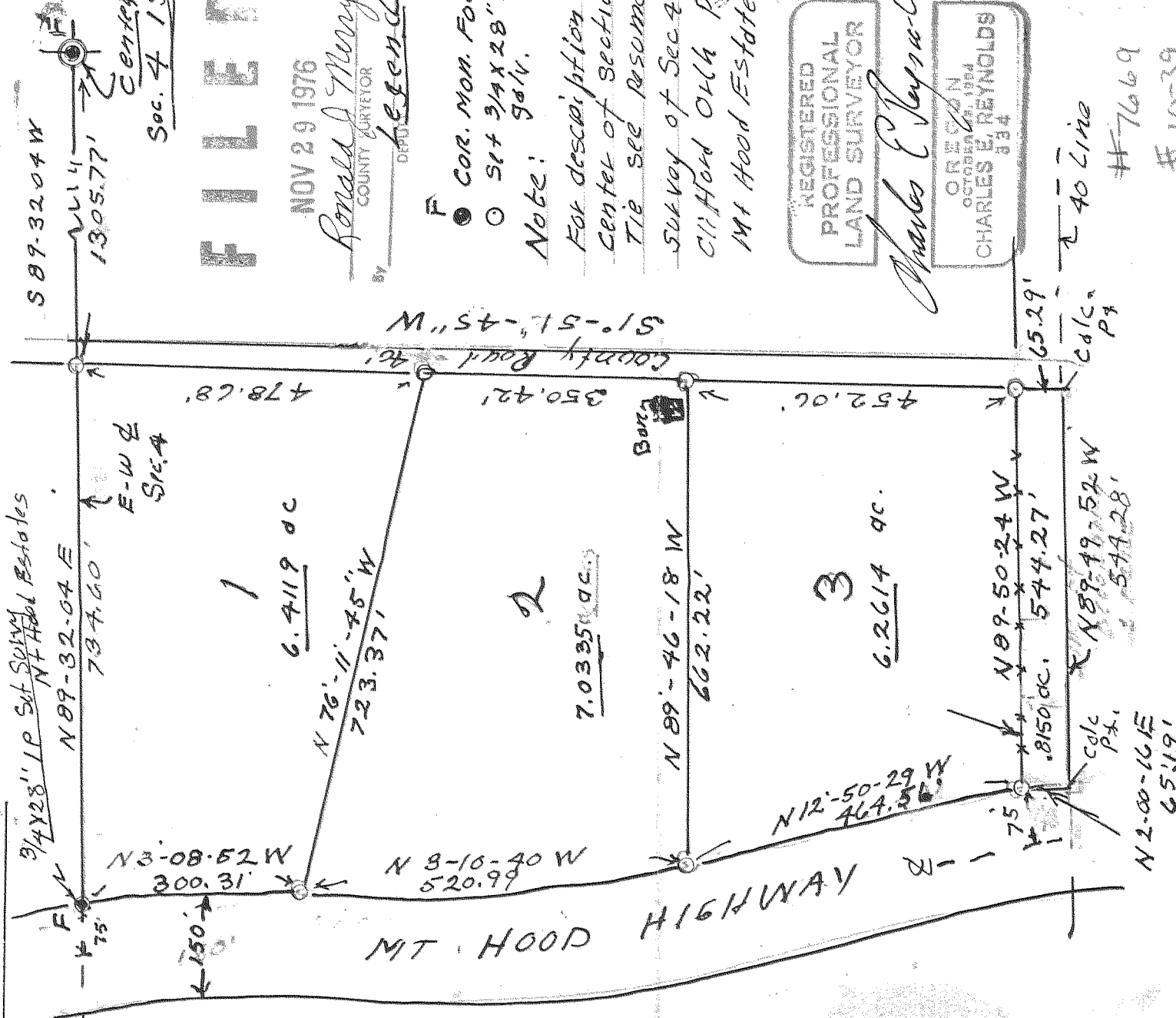
Sept 1975

By-

CHARLES E. REYNOLDS
 5819 N. E. 25th
 PORTLAND, ORE. 97231

Scale 1" = 200'

3/4" x 28" I.P. Sub Survey
 Mt Hood Estates



FILED

NOV 29 1976

Ronald A. Mory
 COUNTY SURVEYOR
 DEPT

F COR. MON. FOUND
 O SET 3/4" x 28" I.P. MON.
 Note:
 For description of
 center of section 4
 Tie see resume of
 survey of Sec 2 for
 Clifford Olch Properties
 Mt Hood Estates

REGISTERED
 PROFESSIONAL
 LAND SURVEYOR

Charles E. Reynolds

OREGON
 OCTOBER 19, 1984
 CHARLES E. REYNOLDS
 834

40 Line
 #7669
 #10-39