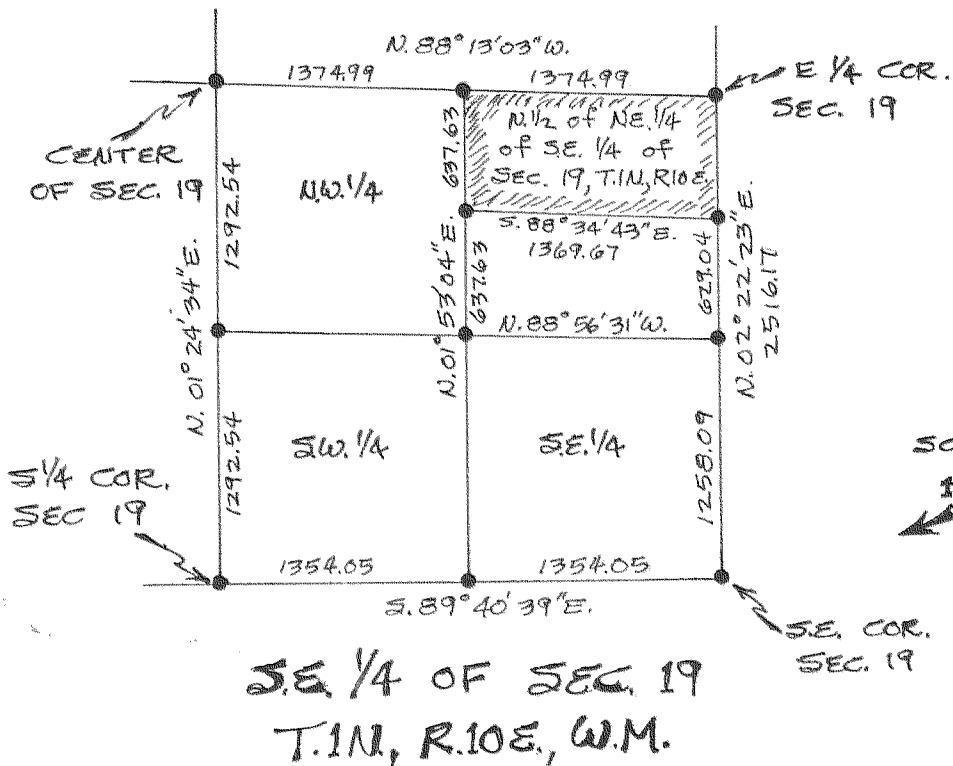


Existing Possession = 14.08 ac
 Assessor's Acreage = 15.90 ac
 Acreage Calculated from Deed = 15.57 ac



scale 1" = 1000' (assumed)

• = Section subdivision corner as calculated from H.R.C. traverse points

FILED

NOV 29 1976

Ronald J. Merry
 COUNTY SURVEYOR
 DEPUTY

"SURVEY"

FOR - Jim Weseman

PURPOSE - Survey the N. 1/2 of the NE 1/4 of the SE 1/4 of SEC. 19, T.1N, R.10E, W.M. lying East of State Hwy No. 281 & calculate the acreage within existing possession lines

HOOD RIVER COUNTY, OREGON

REGISTERED PROFESSIONAL LAND SURVEYOR

Danny L. Coan
 OREGON
 AUGUST 21 1975
 DANNY L. COAN
 1028

Nov. 2, 1976

#7668

6-209