

**RESUME**

ALL CALCULATIONS BASED ON COORDINATES AS ESTABLISHED BY TENNESON ENG. CORP. (T.E.C.) 1968 SURVEY, W.O.# 3737. AT THAT TIME T.E.C. DID NOT ACCUALLY TIE TO THE CORNERS ALONG THE SOUTH LINE OF SEC. 33 & 34 WHICH WERE ESTABLISHED BY A 1940 G.L.O. DEPENDENT RESURVEY. THE COORDINATES USED BY T.E.C. FOR THE SOUTH LINE WERE ESTABLISHED BY A B.P.A. SURVEY AND SHOWN ON "JOHN DAY-KEELER W.D. (PARKS) SANDY SEC) DRAWINGS. SOME DISCREPANCY WAS FOUND BETWEEN OUR FOUND COORDINATES & T.E.C. COORDINATES. IT WAS DECIDED TO HOLD T.E.C.'S COORDINATES BECAUSE OF THE EXTRUSIVE WORK DONE TO THE NORTH OF THESE CORNERS. THE S 1/4 OF 33, S 1/4 COR. OF 34, & THE S 1/4 OF 34 WERE TIED AND THE CORRECTED DISTANCES SHOWN.



ALL BEARING & DISTANCES BASED ON "OREGON NORTH ZONE" COORDINATE SYSTEM

1/4 COR. SET  
1" I.P./PLASTIC CAP  
2 B.T.'S, COR. CARD# 731

1/4 COR. SET  
1" I.P./PLASTIC CAP  
2 B.T.'S COR. CARD# 729

1/16 COR. SET  
5/8" I.P., 1 BT.  
COR. CARD# 728

SEC. COR. SET  
2" I.P., 2 B.T.'S  
COR. CARD# 730

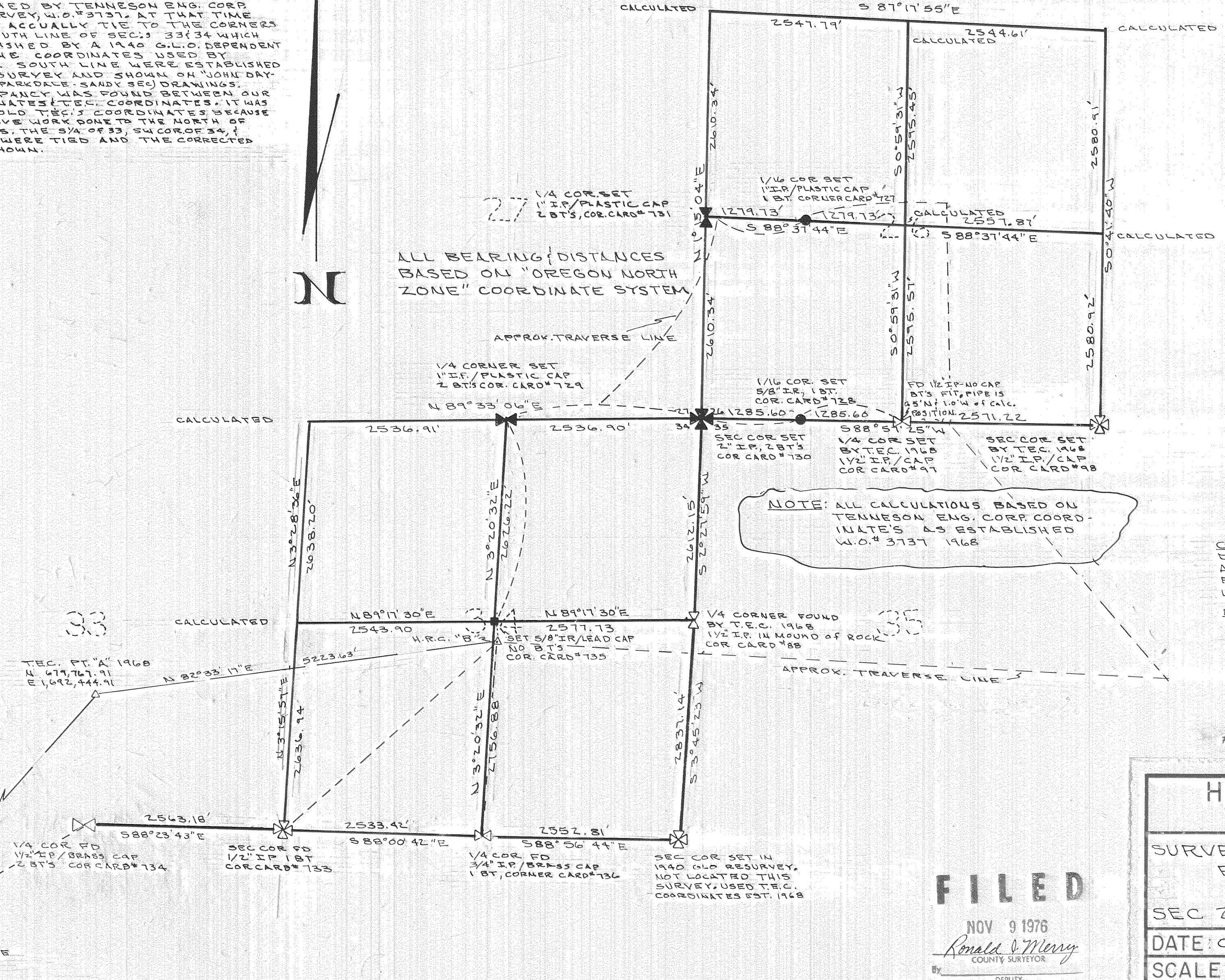
1/4 COR. SET  
BY T.E.C. 1968  
1 1/2" I.P./CAP  
COR. CARD# 97

SEC. COR. SET  
BY T.E.C. 1968  
1 1/2" I.P./CAP  
COR. CARD# 98

NOTE: ALL CALCULATIONS BASED ON TENNESON ENG. CORP. COORDINATE'S AS ESTABLISHED W.O.# 3737 1968

CREW:  
DAVE DOWNING - PARTY CHIEF  
ANTHONY KLEIN - PARTY CHIEF  
RICHARD ARNOLD - INSTRUMENTMAN  
LYNN LESSELYOUNG - CHAINMAN

DATE SURVEYED:  
JUNE, JULY, & AUG., 1976



USC 165 BLUE RIDGE  
N. 676,032.2  
E. 1,689,127.9

T.E.C. PT. A 1968  
N. 677,767.91  
E. 1,692,444.91

1/4 COR. FD  
1/2" I.P./BRASS CAP  
2 B.T.'S COR. CARD# 734

SEC. COR. FD  
1/2" I.P./1 BT.  
COR. CARD# 733

1/4 COR. FD  
3/4" I.P./BRASS CAP  
1 BT., CORNER CARD# 736

SEC. COR. SET IN  
1940 G.L.O. RESURVEY,  
NOT LOCATED THIS  
SURVEY. USED T.E.C.  
COORDINATES EST. 1968

**FILED**  
NOV 9 1976  
Ronald J. Merry  
COUNTY SURVEYOR  
DEPUTY

HOOD RIVER COUNTY SURVEY OFFICE	
SURVEY FOR HOOD RIVER COUNTY FORESTRY DEPT	
IN	
SEC 26 & 34 T. 1 N. R. 9 E. W.M.	
DATE: OCT 25, '76	JOB NO. 13-75
SCALE: 1" = 100'	FILE NO.
DRAWING: ACK	SHEET 1 OF 1

CHART-PAK, INC. LEEDS, MASS. SPH 3677

#7658  
6-128