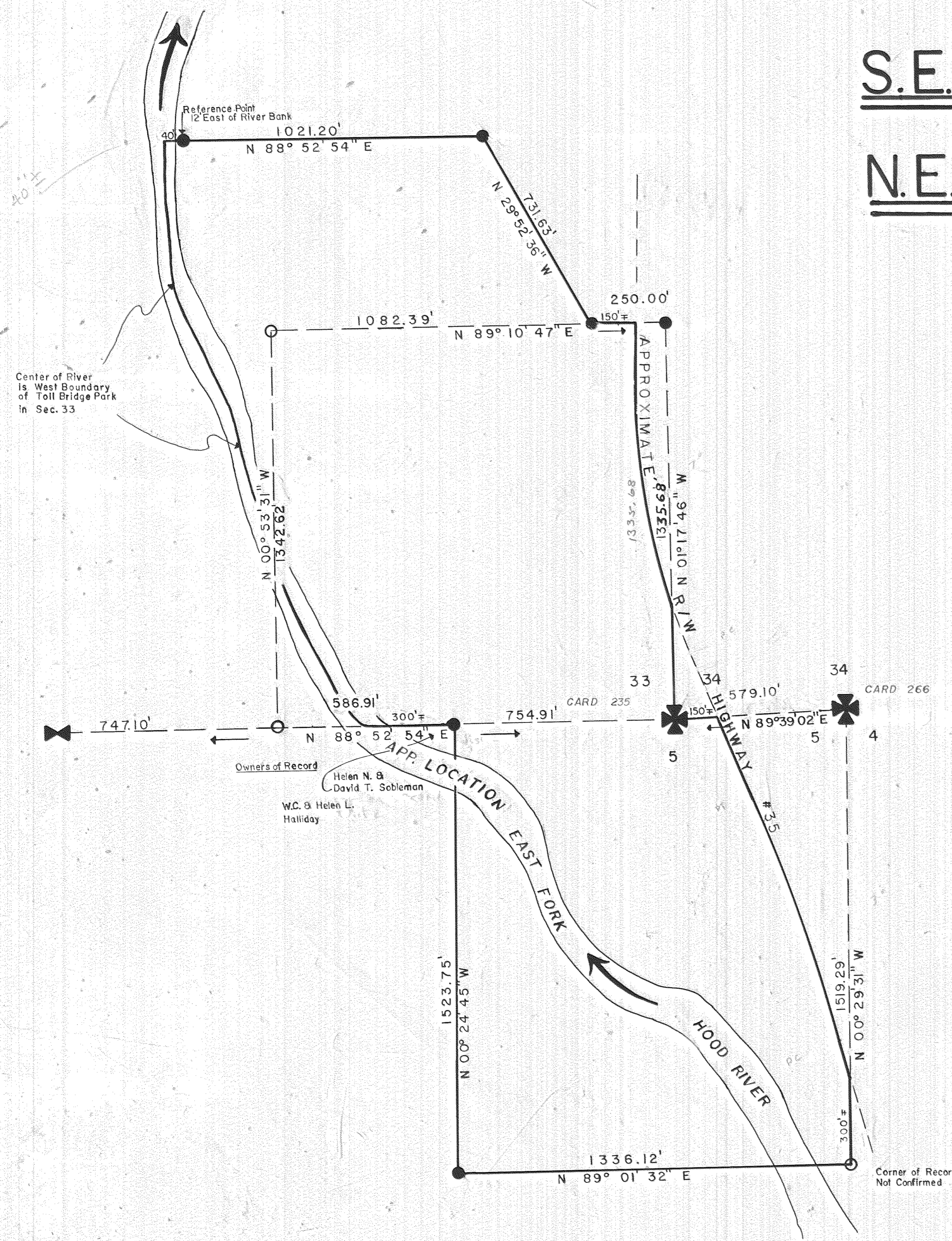




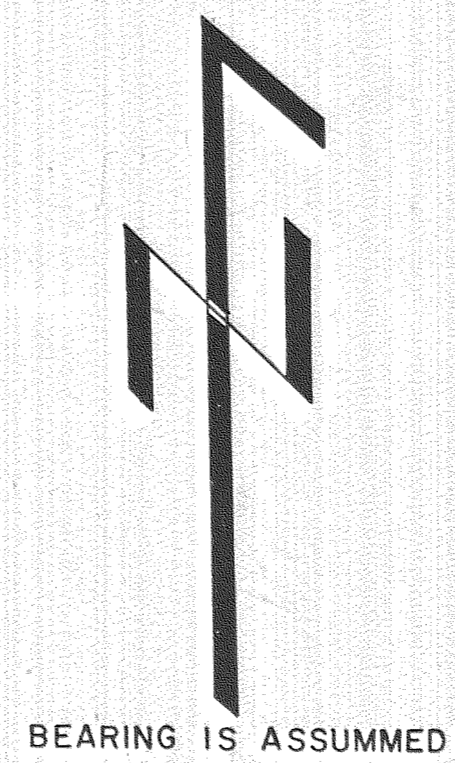


SURVEY IN S.E. 1/4 of SEC. 33, IN IOE, W.M. and N.E. 1/4 of SEC. 5, IS IOE, W.M.



LEGEND

-  SECTION CORNER FOUND
-  1/4 CORNER FOUND
-  SET 5/8" IRON ROD WITH LEAD CAP
-  COMPUTED CORNER— NOT SET



7654

FILED
OCT 14 1976
Ronald J. Merry
COUNTY SURVEYOR
DEPUTY

HOOD RIVER COUNTY DEPT. OF PUBLIC WORKS	
SURVEY OF TOLL BRIDGE PARK	
SEC. 5, IS IOE & SEC. 33, IN IOE	
DATE: 6/10/76	DESIGN BY:
SCALE: 1" = 300'	CHECKED BY:
SHEET ___ OF ___	DRAWN BY: R.L.S.