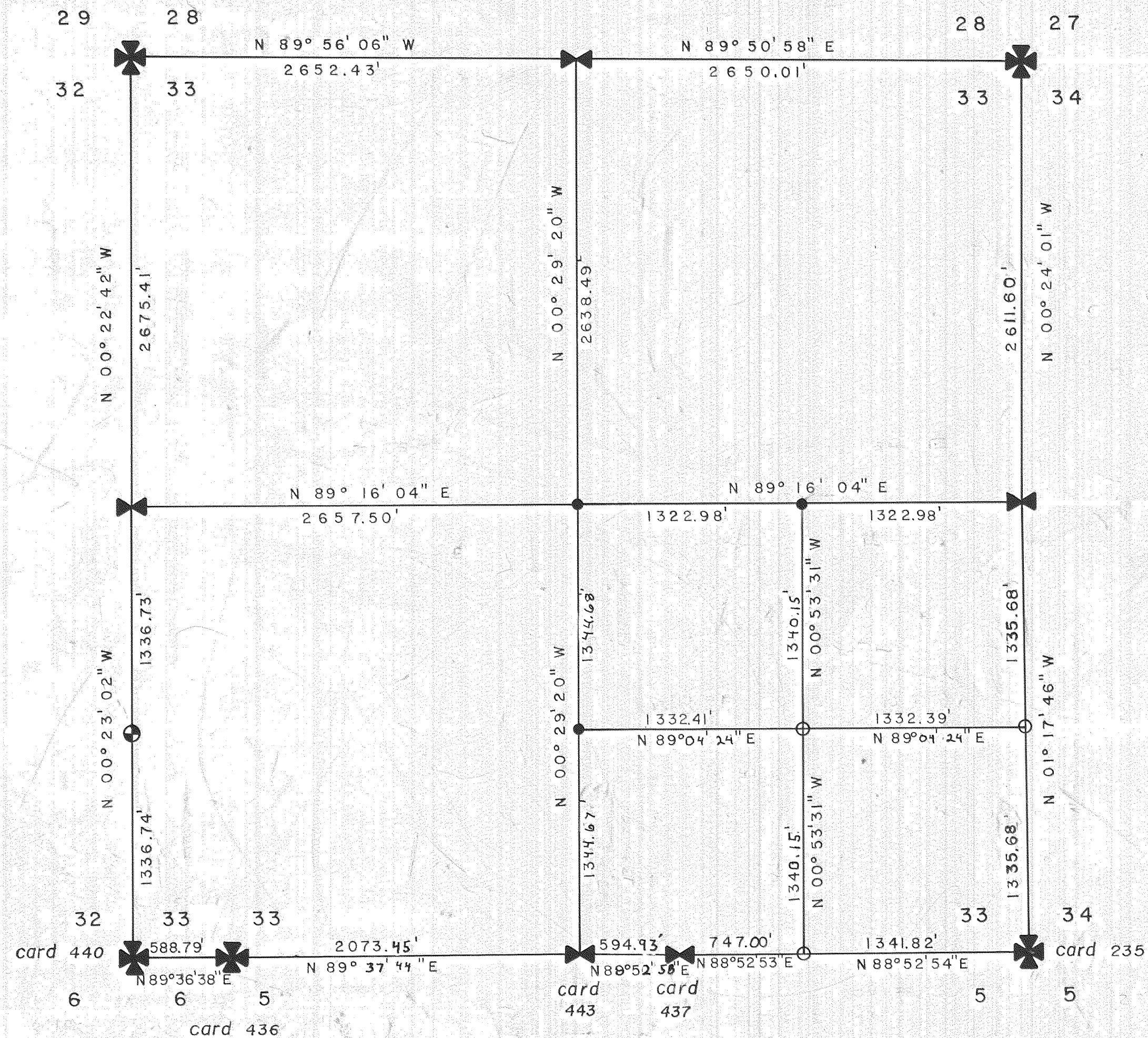
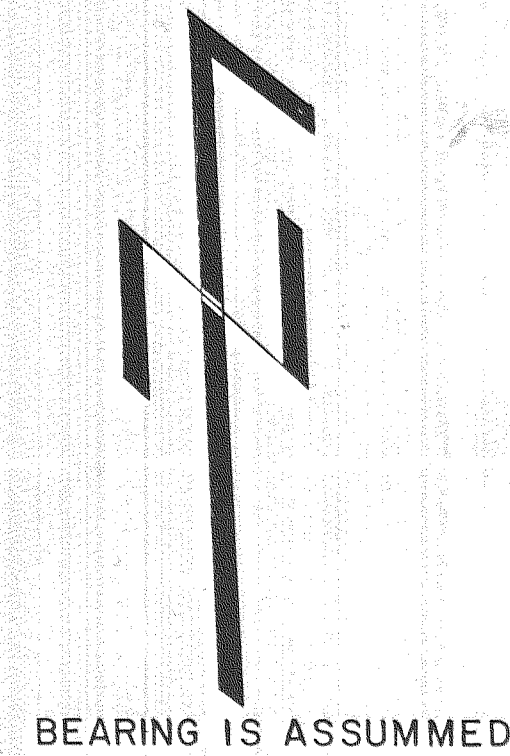


SEC. 33
TWP. IN., R.10E., W. M.



LEGEND

- SECTION CORNER FOUND
- 1/4 CORNER FOUND
- SET 5/8" IRON ROD WITH LEAD CAP
- 1/16" CORNER FOUND
- COMPUTED CORNER NOT SET



#7653 6-327

FILED

OCT 14 1976
Ronald J. Merry
REGISTERED PROFESSIONAL ENGINEER
BY: [Signature]

HOOD RIVER COUNTY DEPT. OF PUBLIC WORKS	
SURVEY OF TOLL BRIDGE PARK	
TWP. IN., R.10E., W.M.	
DATE: 6/4/76	DESIGN BY:
SCALE: 1" = 600'	CHECKED BY:
SHEET ___ OF ___	DRAWN BY: R.L.S.