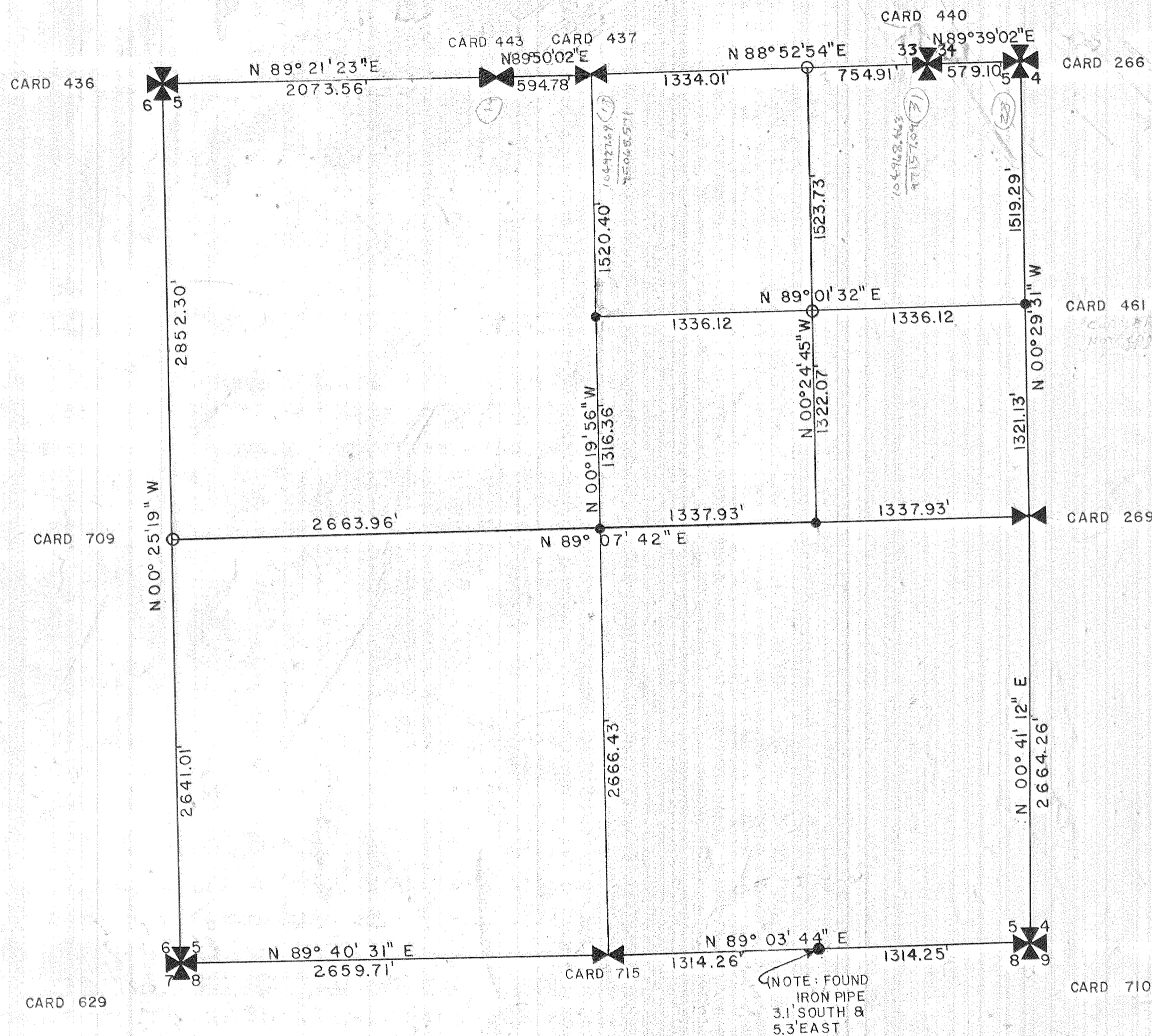


SEC. 5
TWP. 1S., R. 10E., W.M.



LEGEND

- ✠ SECTION CORNER FOUND
- ✚ 1/4 CORNER FOUND
- SET 5/8" IRON ROD WITH LEAD CAP
- COMPUTED CORNER NOT SET

NOTE

CORNERS PROPORTIONED FROM G.L.O. MEASUREMENTS

NE
 BEARING IS ASSUMED



7652

FILED
 OCT 14 1976
 Ronald J. Merry
 SURVEYOR
 DEPUTY

HOOD RIVER COUNTY DEPT. OF PUBLIC WORKS	
SURVEY OF TOLL BRIDGE PARK	
TWP. 1 S, RNG. 10 E, W.M. SEC. 5	
DATE: 5 / 14 / 76	DESIGN BY:
SCALE: 1" = 600'	CHECKED BY:
SHEET ___ OF ___	DRAWN BY: R.L.S.