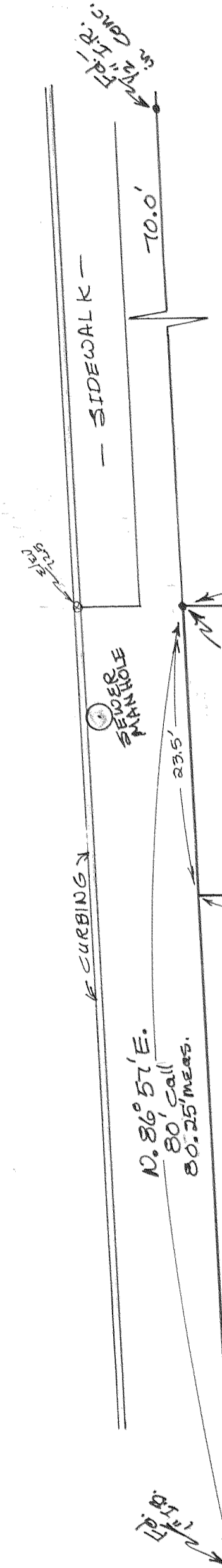


— MONTELLLO STREET (50 ft) —



#7637



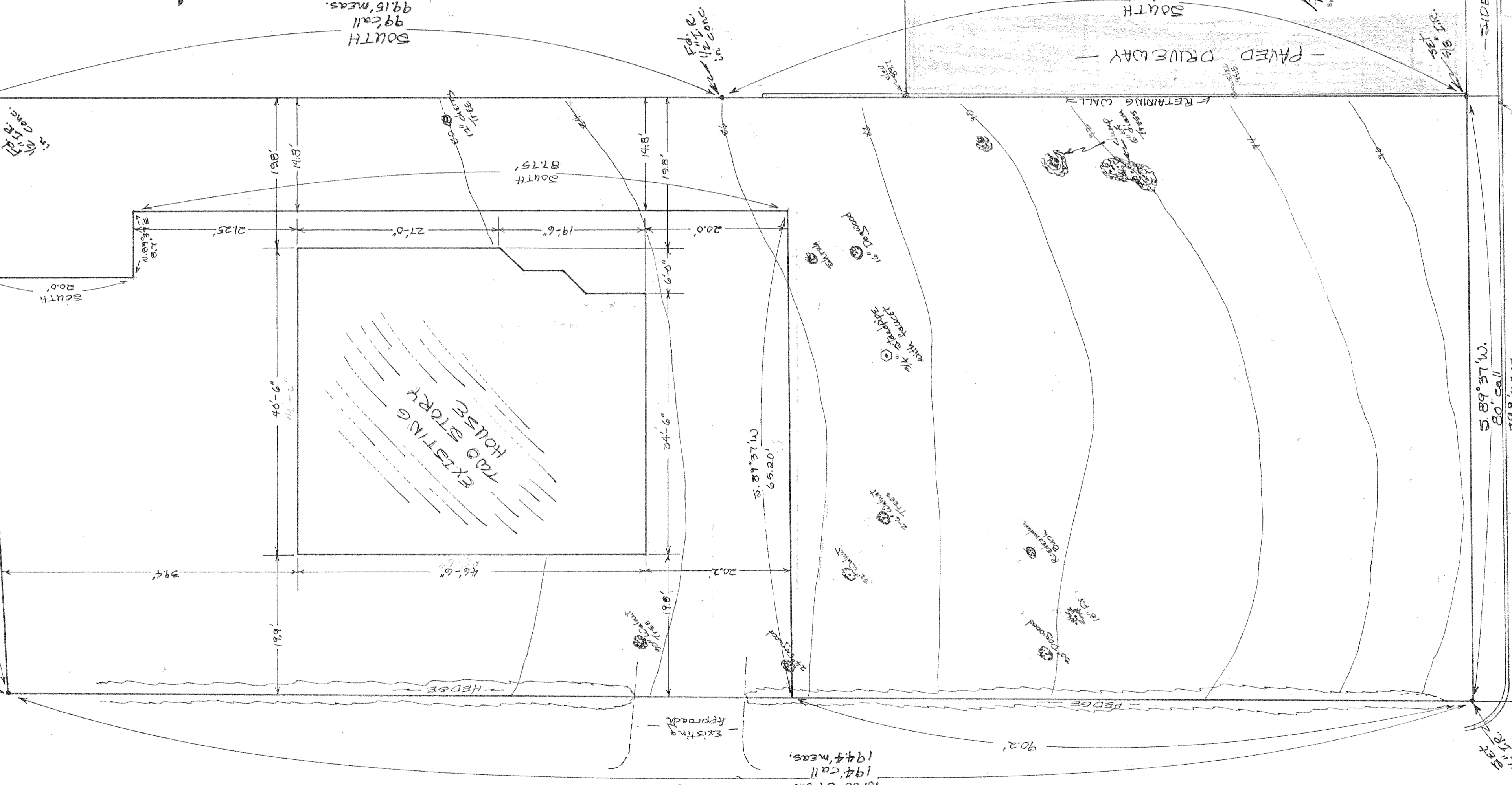
SCALE  
1" = 10'

elev. on assumed  
datum  
Bearing Assumed

**PROPERTY SURVEY**  
NATURE - MINOR PARTITION  
FOR - KEN PATTERSON  
LOCATION - PARCEL LOCATED  
IN THE NW 1/4 OF THE NW 1/4  
OF SEC. 36, TEN, R. 10E,  
W.M.  
CITY OF HOOD RIVER,  
COUNTY OF HOOD RIVER,  
STATE OF OREGON

LOT WITH 2-STORY  
HOUSE = 6730 #  
NEW LOT = 9000 #

**FILED**  
REGISTERED  
PROFESSIONAL  
LAND SURVEYOR  
DANNY L. CHRON  
SEP 17 1976  
By *Ronald J. Mery*  
COUNTY SURVEYOR  
DEPUTY  
OREGON  
AUGUST 22, 1975  
DANNY L. CHRON  
1028  
April 4, 1976



#7637

8-540

— 12th STREET (50 ft) —

— PROSPECT AVENUE (40 ft) —