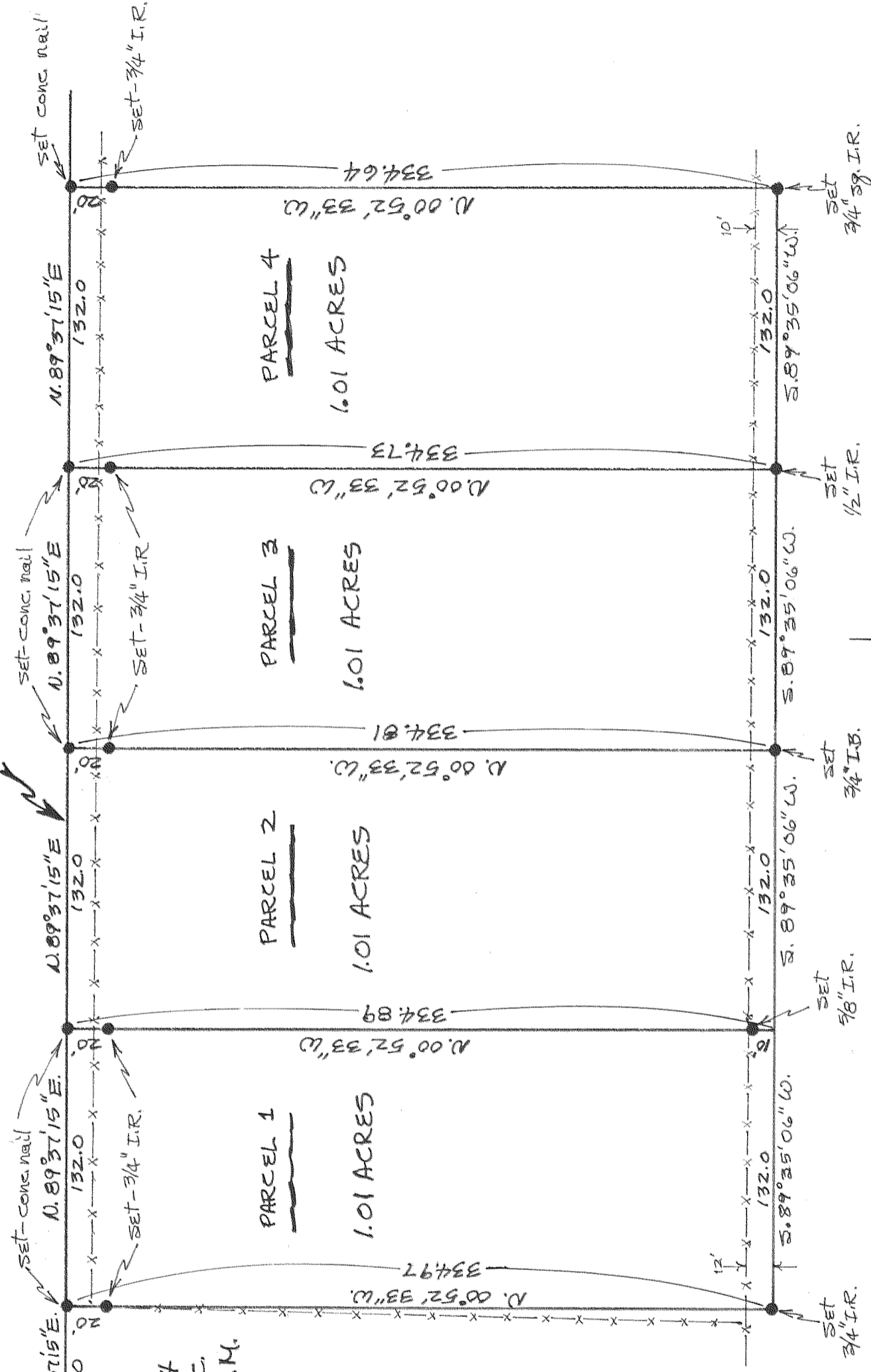


RD. - 40' R/W



396.0
N. 89° 37' 15" E.
SET - CONC. NAIL
132.0
N. 89° 37' 15" E.
SET - 3/4" I.R.
132.0
N. 89° 37' 15" E.
SET - CONC. NAIL
132.0
N. 89° 37' 15" E.
SET - 3/4" I.R.

CALC - NOT SET
N.W. COR. OF S.E. 1/4
OF NE 1/4 OF SEC.
28, T1N, R10E, W.M.

Scale 1"=1000'

Scale 1"=60'

7625

FILED

SEP 8 1976
Ronald J. Merry
COUNTY SURVEYOR
DEPUTY

"SURVEY"

FOR - EVERETT Monahan

PURPOSE - Minor Partition

SURVEY REF - Survey by:

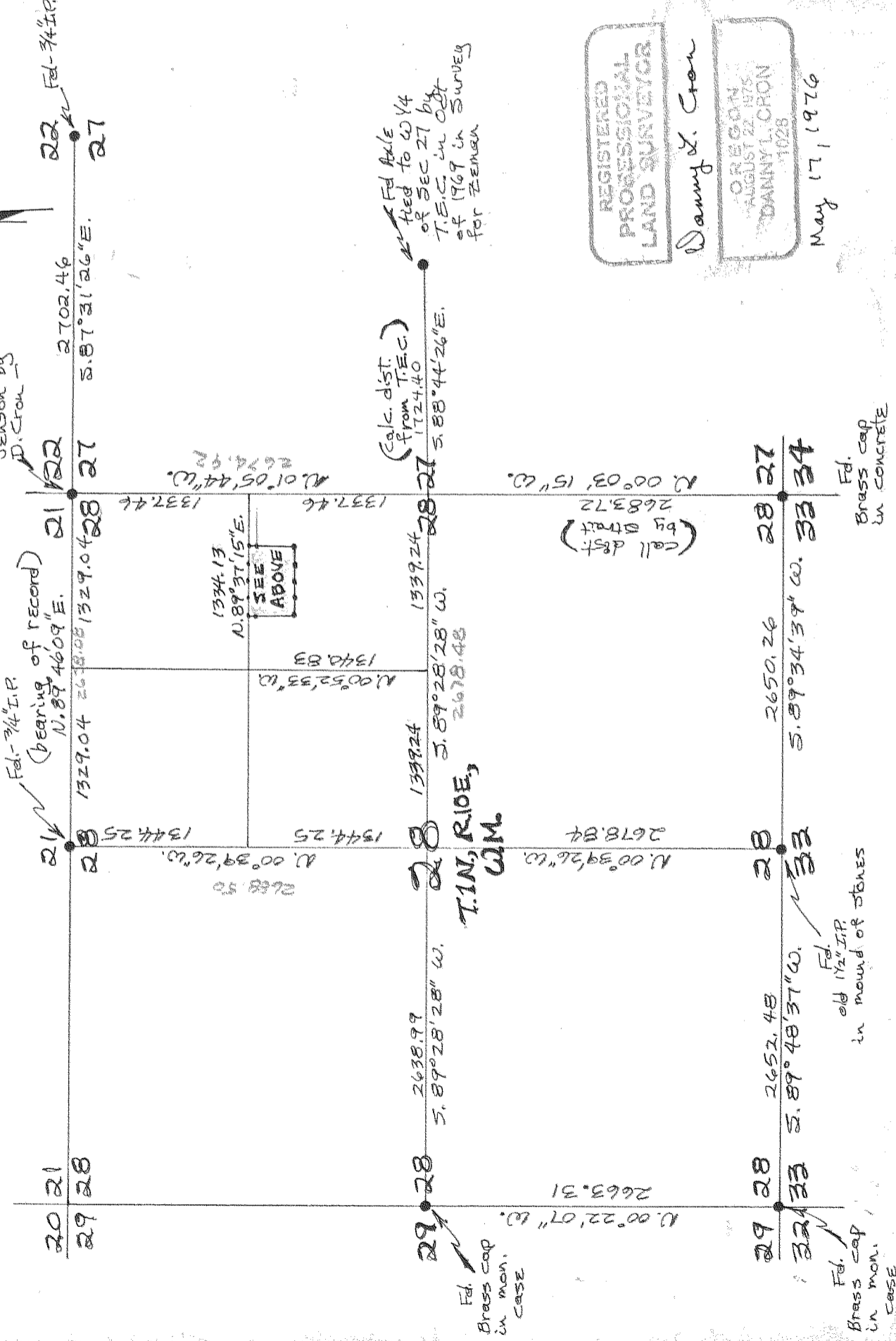
- 1) T.E.C. - Oct. 1969 for Zeman
- 2) Strait - Dec 1970 for Stanley
- 3) CRON - Feb 1976 for Jenson

LOCATION - Parcels

located in the S.E. 1/4
of the N.E. 1/4 of
SEC. 28, T1N, R10E,
W.M.

HOOD RIVER COUNTY,
OREGON

REGISTERED
PROFESSIONAL
LAND SURVEYOR
Danny S. Cron
OREGON
AUGUST 22, 1975
DANNY L. CRON
11028
May 17, 1976



Fid. in mon. case

Brass cap in concrete

Fid. in mon. case

Brass cap in concrete

7625

6-274