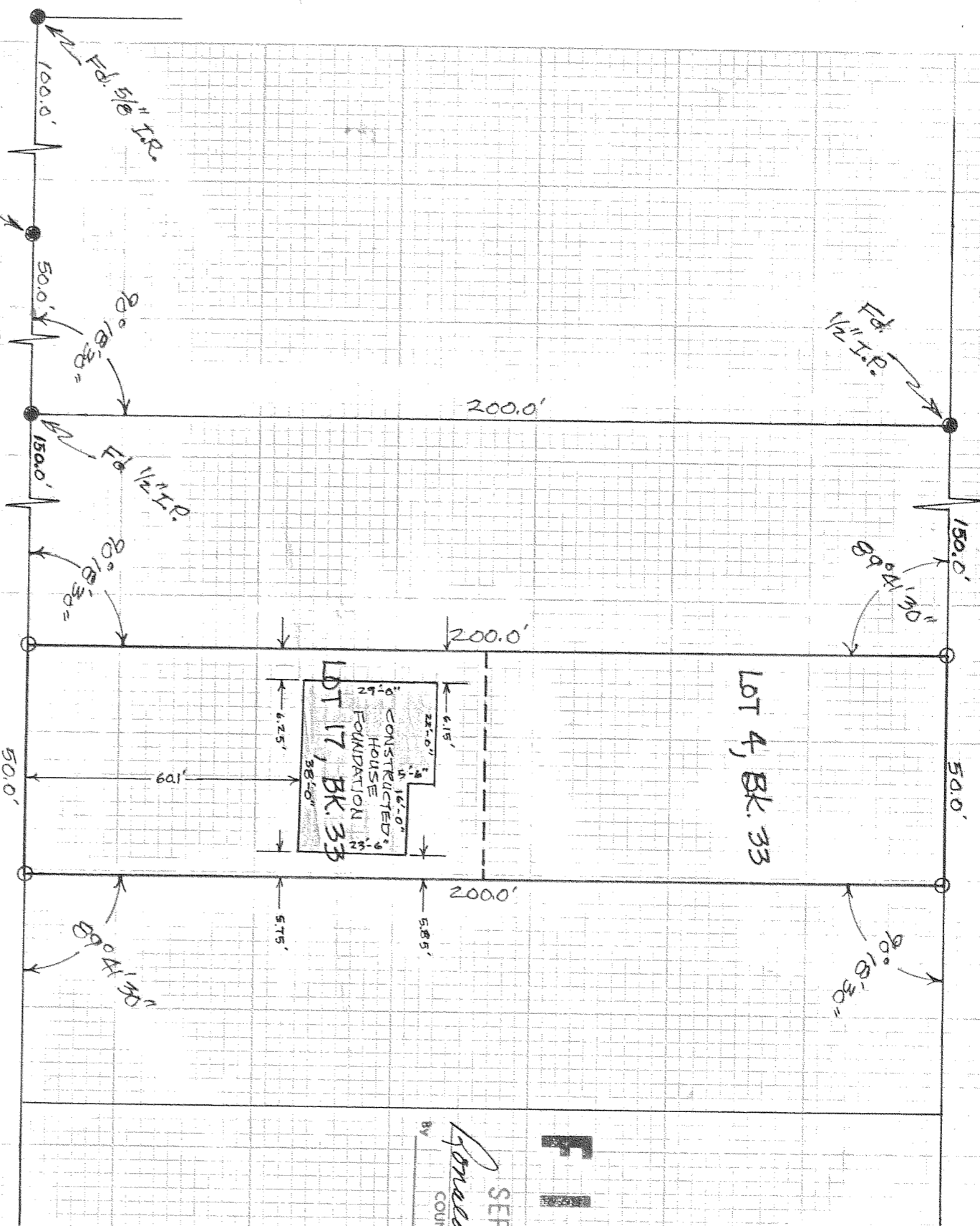


MANTELLO AVE.

30' 30'

PROSPECT AVE.

30' 30'

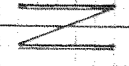


SEP 8 1976
 Ronald A. Merry
 COUNTY SURVEYOR
 DEPUTY

FILED

7607

○ = 5/8" I.R. monument set
 ● = monument of record found & accepted



Scale 1"=30'

* LOCATION OF NEW HOUSE FOUNDATION

REGISTERED PROFESSIONAL LAND SURVEYOR
 Danny L. Cron
 OREGON
 AUGUST 22, 1975
 DANNY L. CRON
 1028

4/15/76

* REVISED AUG. 24, 1976

8-596

7607