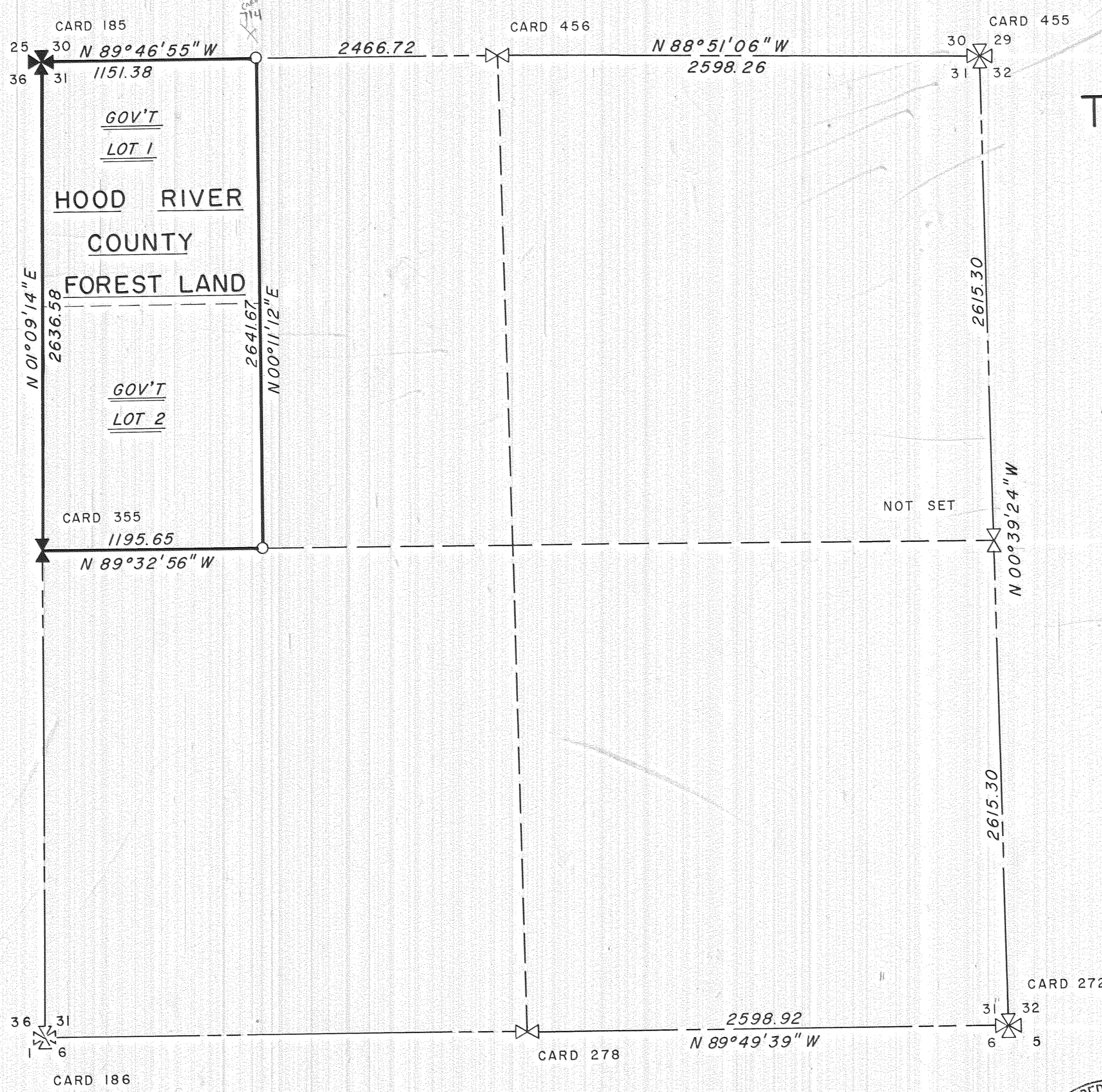


BASIS OF BEARING
OREGON LAMBERT COORDINATE
PROJECTION



SEC. 31,
TWP. 1S., R. 10E., W.M.

FILED
DEC 8 1975
Ronald J. Merry
COUNTY SURVEYOR
DEPUTY

LEGEND

- SECTION CORNER
- 1/4 CORNER
- IRON ROD WITH LEAD CAP - SET

NOTE

FOR DETAILED DESCRIPTION OF ALL CORNERS SET AND FOUND SEE HOOD RIVER COUNTY CORNER CARD FILE.

#7596



HOOD RIVER COUNTY SURVEY OFFICE	
SURVEY OF HOOD RIVER CO. FOREST LAND SEC. 31, TWP. 1S., R. 10E., W.M.	
DATE: JAN. 6, 1976	JOB NO. 17-75
SCALE: 1" = 500'	FILE NO. _____
DRAWING: DOWNING	SHEET 1 OF 1