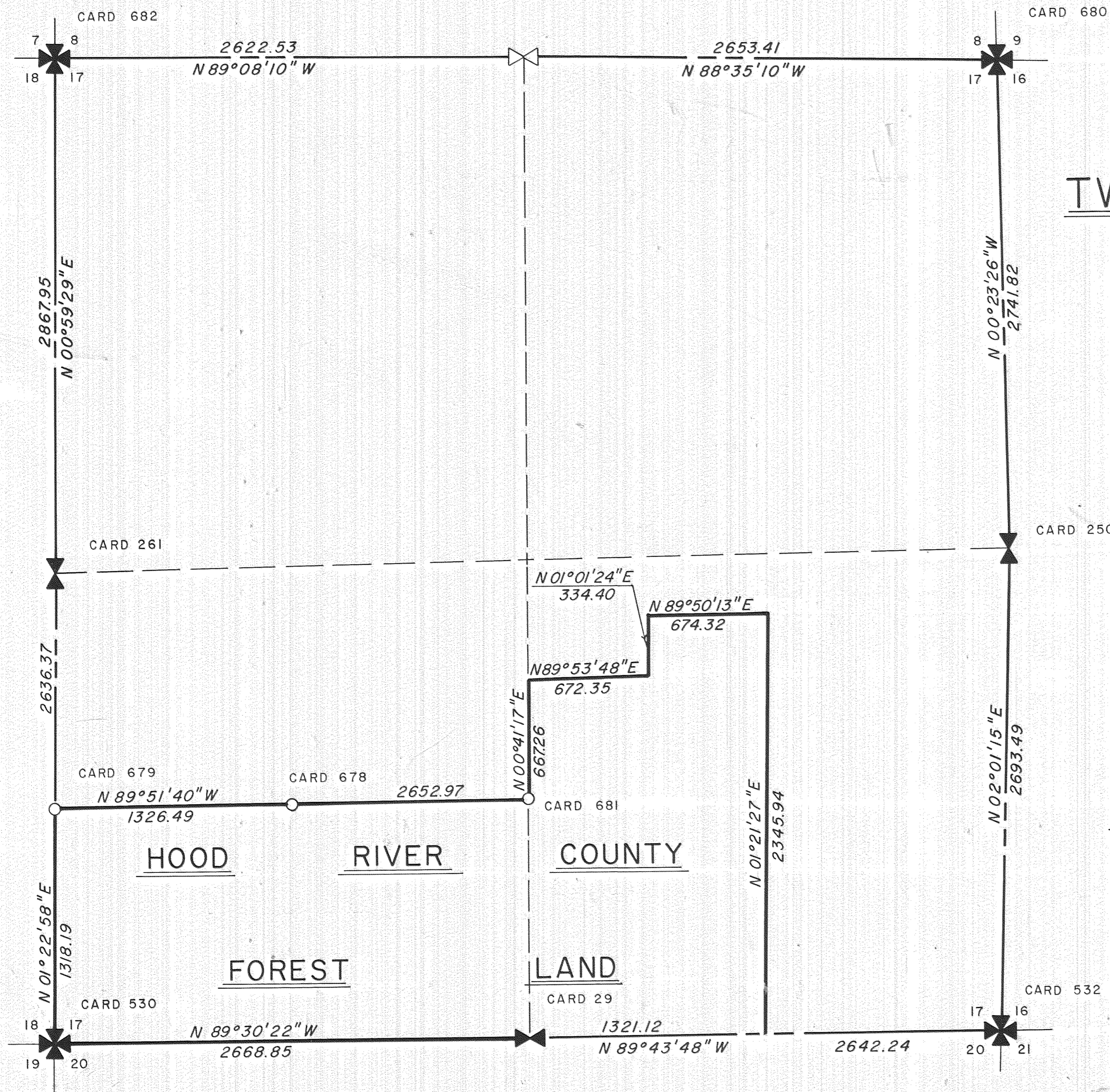




BASIS OF BEARING
SOLAR OBSERVATION



SEC. 17,
TWP. 1S., R. 10E., W.M.

FILED
DEC 8 1975
Ronald J. Merry
COUNTY SURVEYOR
By _____
DEPUTY

LEGEND

- SECTION CORNER - FOUND
- 1/4 CORNER - FOUND
- 1/4 CORNER - SET
- IRON ROD WITH LEAD CAP - SET

NOTE

FOR DETAILED DESCRIPTION OF ALL CORNERS SET AND FOUND SEE HOOD RIVER COUNTY CORNER CARD FILE.

**HOOD RIVER COUNTY
SURVEY OFFICE**

SURVEY OF HOOD RIVER CO.
FOREST LAND
SEC. 17, TWP. 1S., R. 10E., W.M.

DATE: DEC. 19, 1975	JOB NO. 3-75
SCALE: 1" = 500'	FILE NO. _____
DRAWING: DOWNING	SHEET 1 OF 1



#7595

#7595