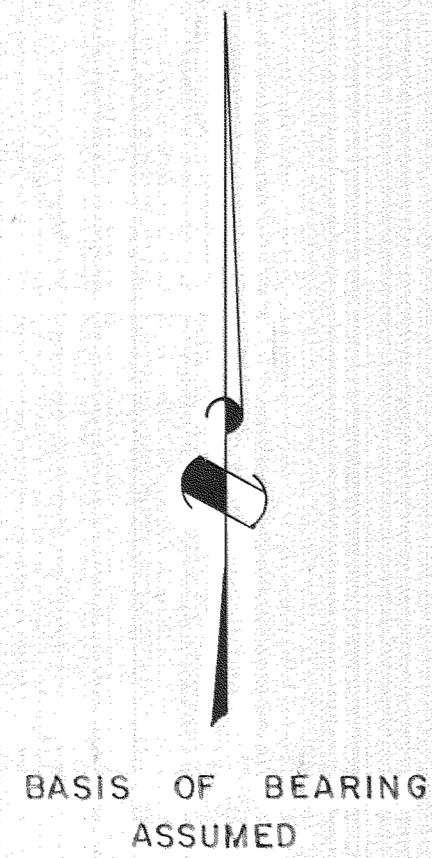





SEC. 32
TWP. 3N., R. 11E., W.M.

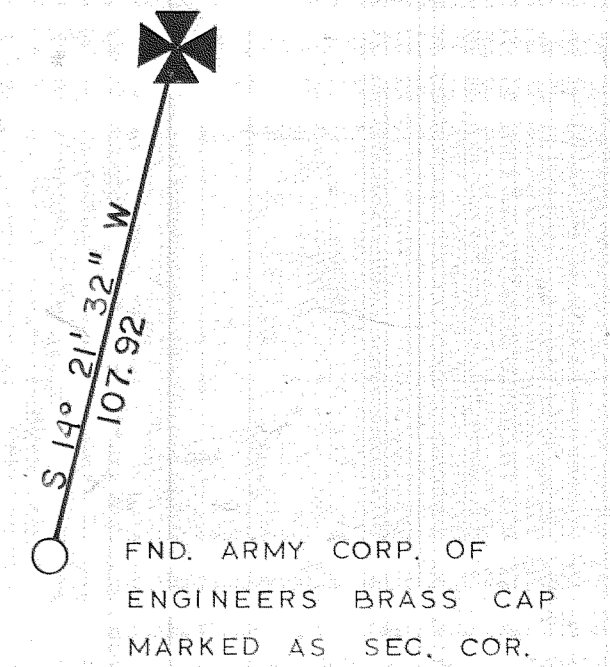
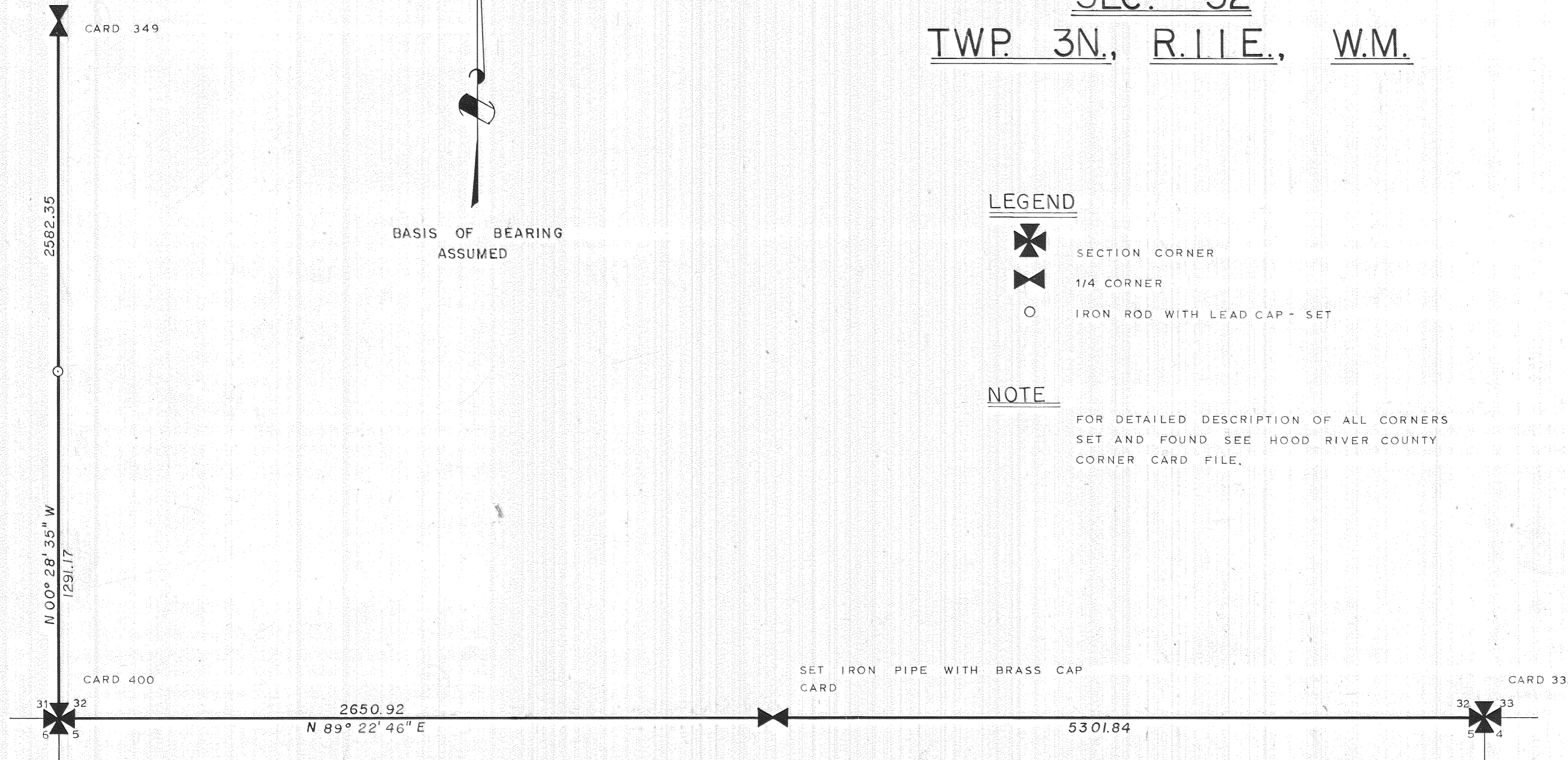


LEGEND

-  SECTION CORNER
-  1/4 CORNER
-  IRON ROD WITH LEAD CAP - SET

NOTE

FOR DETAILED DESCRIPTION OF ALL CORNERS SET AND FOUND SEE HOOD RIVER COUNTY CORNER CARD FILE.



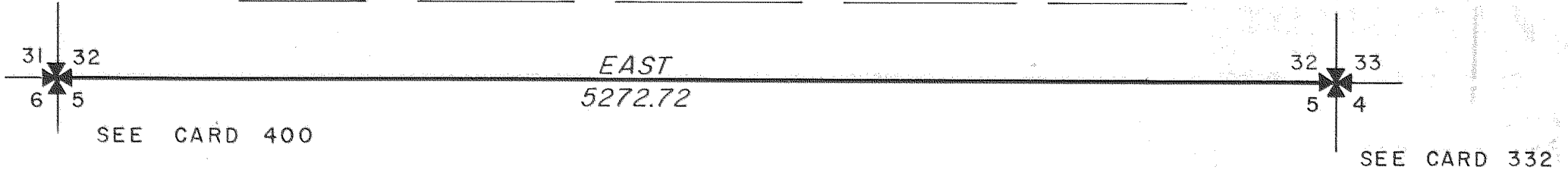
7594

FILED

SEP 17 1976
Ronald J. Mery
 COUNTY SURVEYOR

HOOD RIVER COUNTY SURVEY OFFICE	
SURVEY OF HOOD RIVER CO. FOREST LAND	
SEC. 32, TWP. 3N., R. 11E., W.M.	
DATE:	JOB NO. 7-75
SCALE: 1" = 300'	FILE NO. _____
DRAWING: MILES	SHEET 1 OF 1

HOOD RIVER COUNTY FOREST LAND



NOTE

1. FOR DETAILED DESCRIPTION OF CORNERS SHOWN SEE H.R.C. FILES
2. AN EXTENSIVE SEARCH WAS MADE FOR THE S.1/4 SEC. 32 - NOT FOUND

#7594

BASIS OF BEARING ASSUMED



HOOD RIVER COUNTY SURVEY OFFICE	
SOUTH LINE SECTION 32	
TOWNSHIP 3 N., RANGE 11 E., W.M.	
DATE: 12/23/75	JOB NO. 7-75
SCALE: 1" = 600'	FILE NO. _____
DRAWING: DOWNING	SHEET 1 OF 1