

Hwy. 35

Hood River

M Webster Road

E 1/4 SE 1/4  
S 23 T 2 N R  
10 E W M

K Fd. IP

# 7582

Ehrck Road EAST

CONC. Nail

S 3° 16' E

342.9  
24' Road Easement  
N 3° 16' W

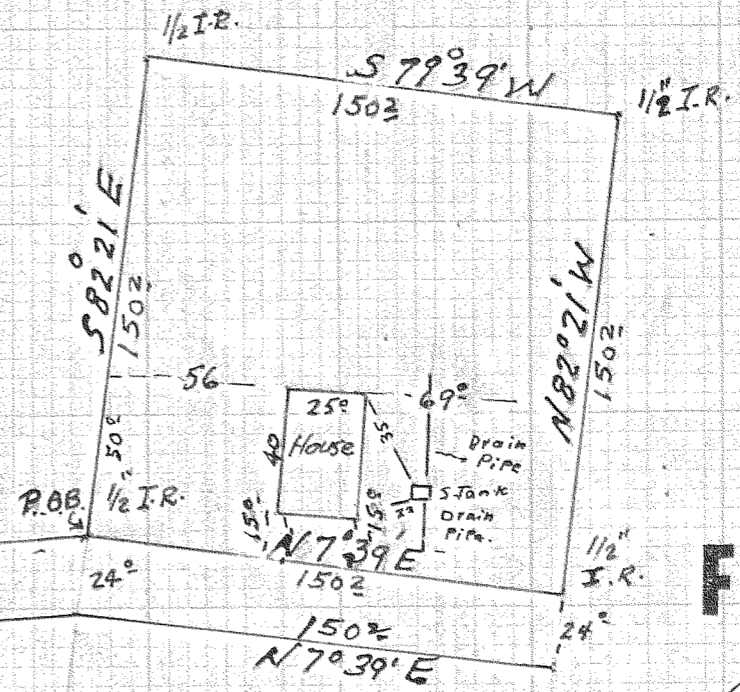
1005.78

W 1/4 SE 1/4  
S 23 T 2 N  
R 10 E W M

Fd. 3/4" IP

M Ehrck Road

1/4 Cor. 23-26  
T 2 N R 10 E W M



FILED

DEC 8 1975

Ronald D. Merry  
COUNTY SURVEYOR

DEPUTY

Survey for Norman Stone -  
E 1/2 - SW 1/4 - SE 1/4  
Section 23 T2N R 10 E W M.

Scale 1" = 60 feet.

REGISTERED  
PROFESSIONAL  
LAND SURVEYOR

Percy Crawford  
OREGON  
JANUARY 5, 1943  
P. H. Crawford  
60

9 May 1975

7-351