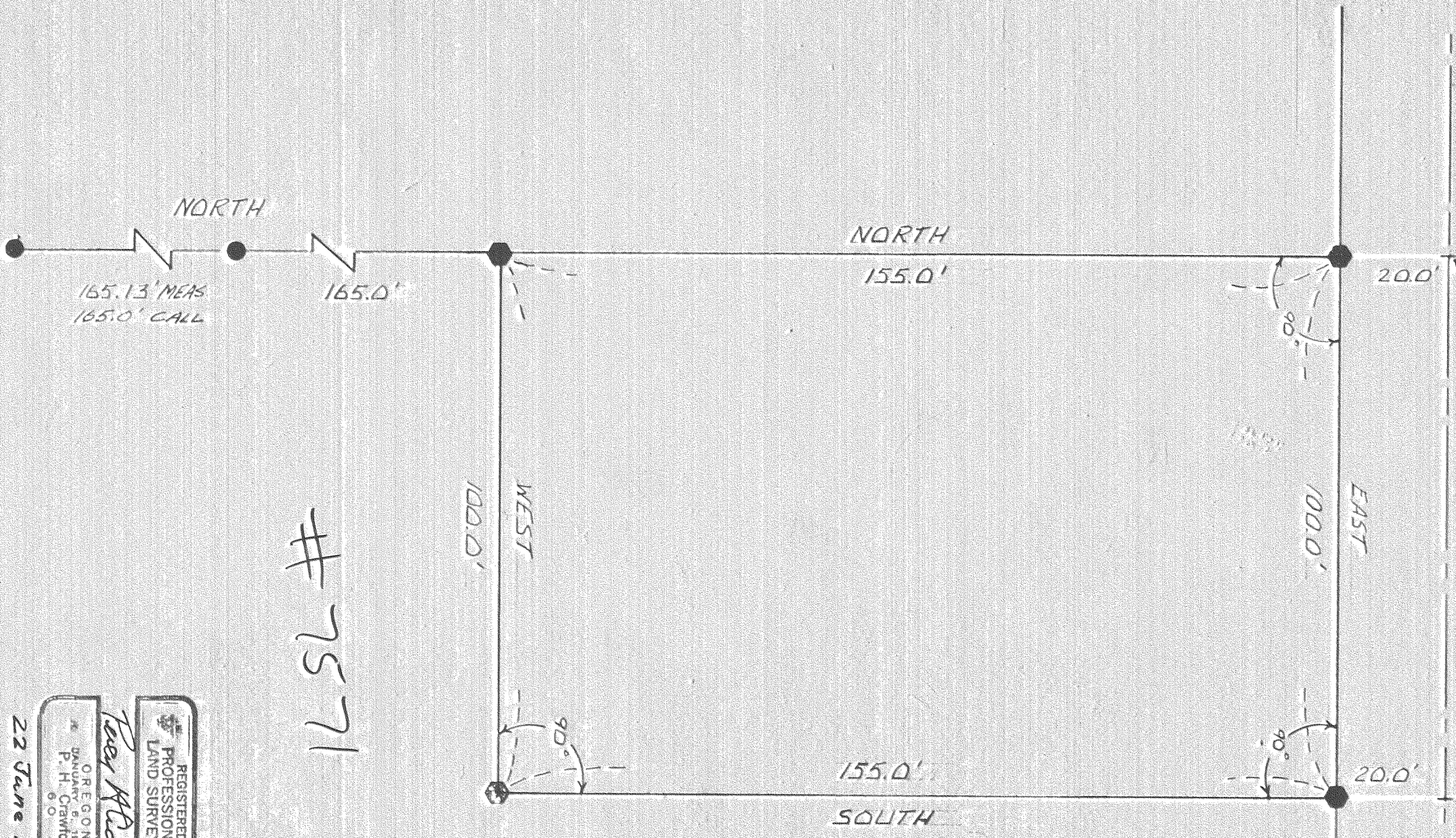


#7571

NW CORNER
NE 1/4 NW 1/4 SEC 1 T2N R12E

ELLIOT ROAD

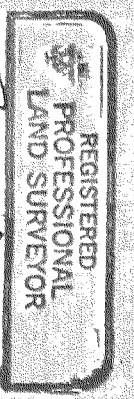


BEARINGS BASED
ON DEED

● FOUND 1/2" I. P.
● SET 1/2" I. ROD

#7571

SURVEY FOR
W. H. BLASHFIELD
IN THE
NE 1/4 NW 1/4 SEC 1 T2N R12E
SCALE 1" = 20' DATE 6/29/74
DRWN: W. L. BROWN



P. H. Crawford

OREGON
JANUARY 6, 1948
P. H. Crawford
000

22 June 1974



W. L. Brown

DEC 6 1974
COUNTY SURVEYOR
DEPUTY

6-587