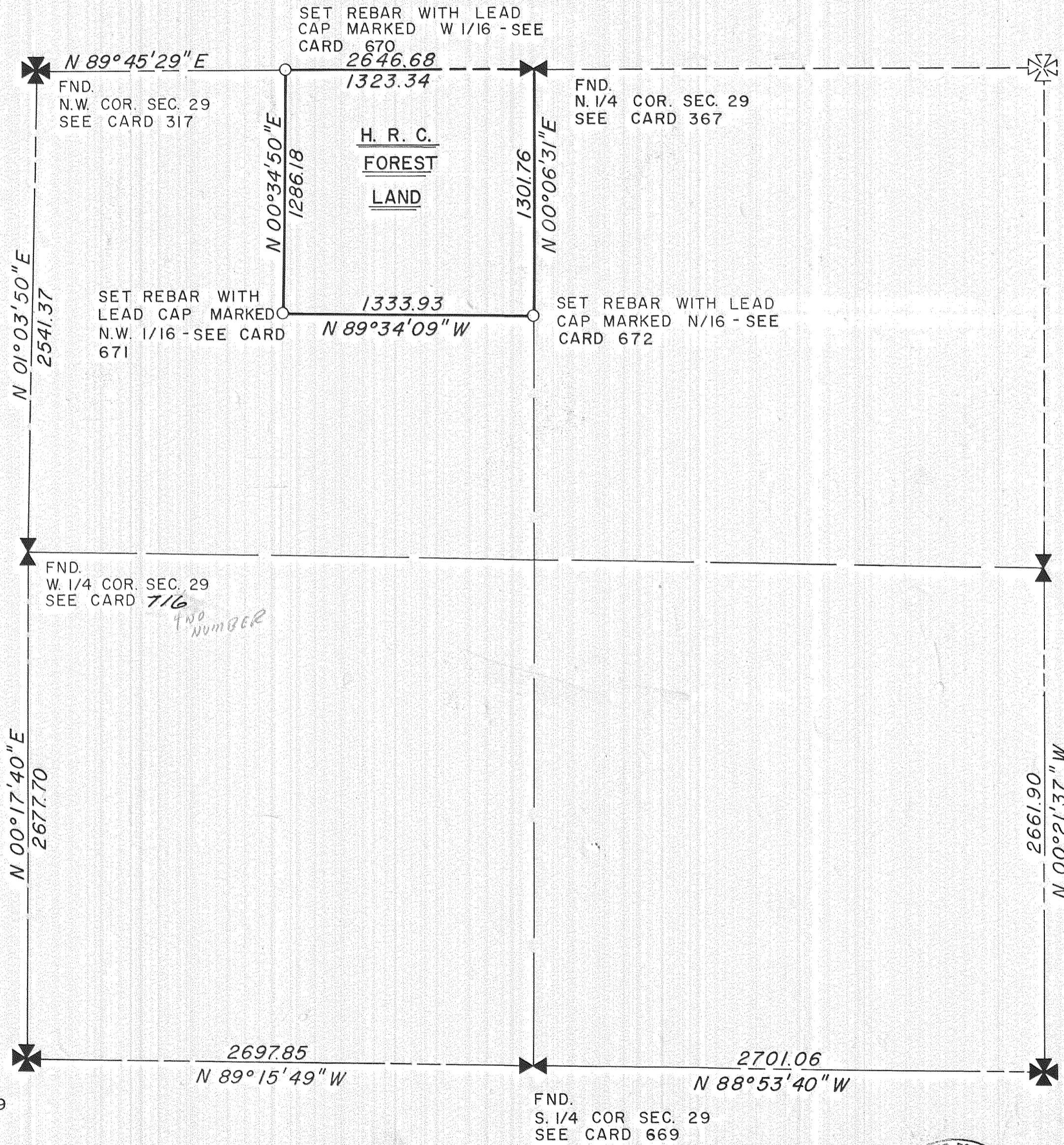


SEC. 29, TWP. 1N., R. 11E., W. M.

7561



LEGEND

- ✠ SECTION CORNER - FOUND
- ✚ 1/4 CORNER - FOUND
- IRON ROD WITH LEAD CAP - SET

NOTE

FOR DETAILED DESCRIPTION OF ALL POINTS SHOWN SEE H.R.C. CARD FILE.

FILED
OCT 23 1975
Ronald J. Merry
COUNTY CLERK



HOOD RIVER COUNTY SURVEY OFFICE	
SURVEY OF THE N.E. 1/4 NW. 1/4 SECTION 29, TOWNSHIP 1N., RANGE 11E.	
DATE: 9-9-75	JOB NO. 12-75
SCALE: 1" = 500'	FILE NO. 7561
DRAWING: DOWNING	SHEET 1 OF 1