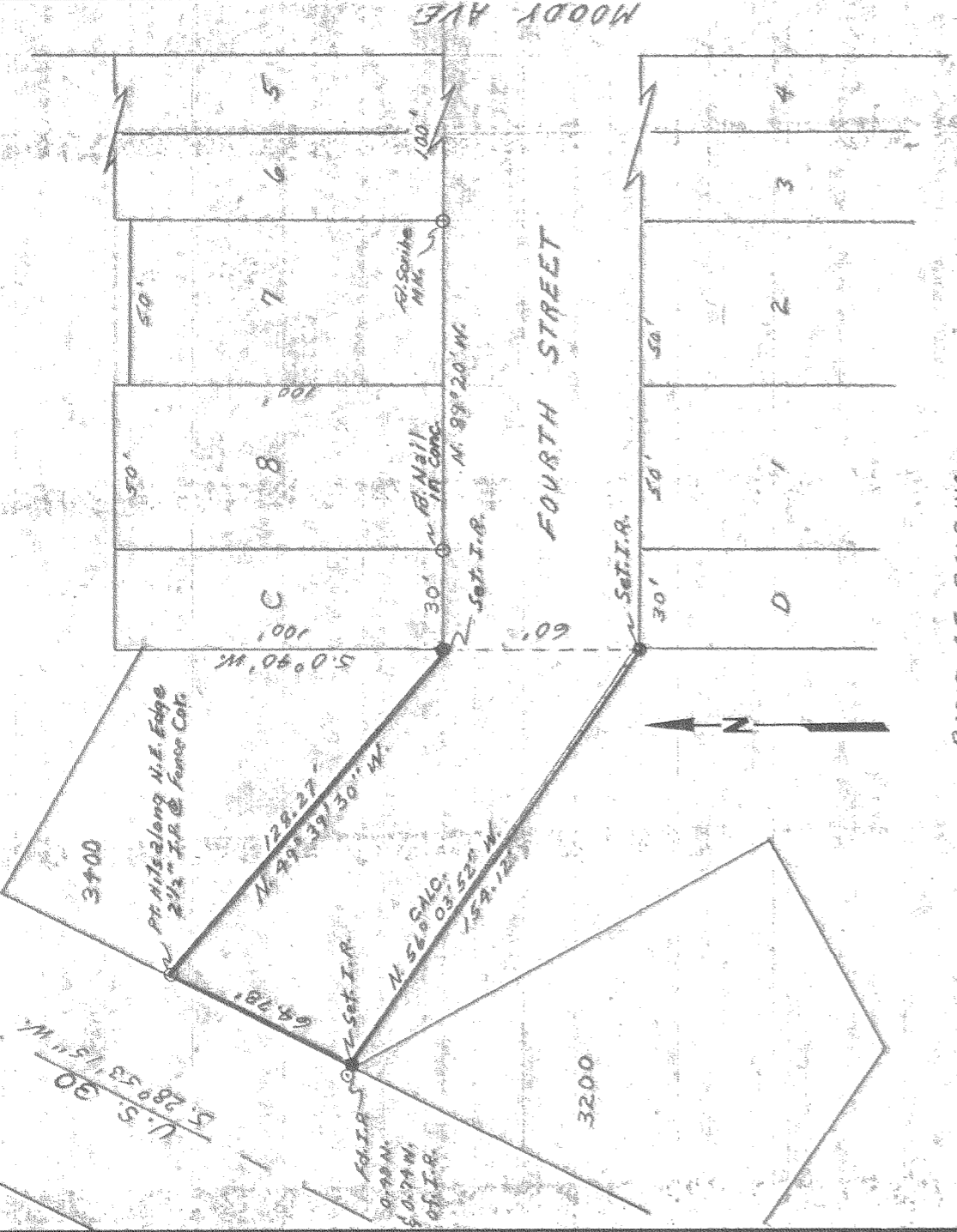


SURVEY LOCATED IN  
S.E. 1/4, S.W. 1/4, SEC. 12, T. 2 N., R. 7 E. M.M.

SEE DWG. D.A.I. # 73252



# 7559

**FILED**

OCT 23 1975

*Ronald J. Mery*  
COUNTY CLERK

BY \_\_\_\_\_  
DEPUTY

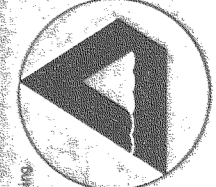
REGISTERED  
PROFESSIONAL  
LAND SURVEYOR

*Anthony C. Klein*

OREGON  
JULY 27, 1970  
ANTHONY C. KLEIN  
932

DATE	9/22/75	DRAWN	J.P.R.
SURVEY	J.P.R.	DESIGN	
CHECKED	A.C.K.	APPROVED	
SCALE	1" = 50'		
PROJECT NO.	75255		

Engineering - Surveying - Data Processing



**Dielschneider  
Associates Inc**

No. 8 Fourth St.  
Hood River, Oregon 97031

SURVEY FOR  
CITY OF  
CASCADE LOCKS ORE.

K&E  
ALBANY, ORE.  
TRAVERS PAPER

6-395