

NOTE

REF. DRAWING TO U.S. LINE ARE LINED NORTH
OF S. CORNER BUT NOT NECESSARILY THE
TRUE CORNER

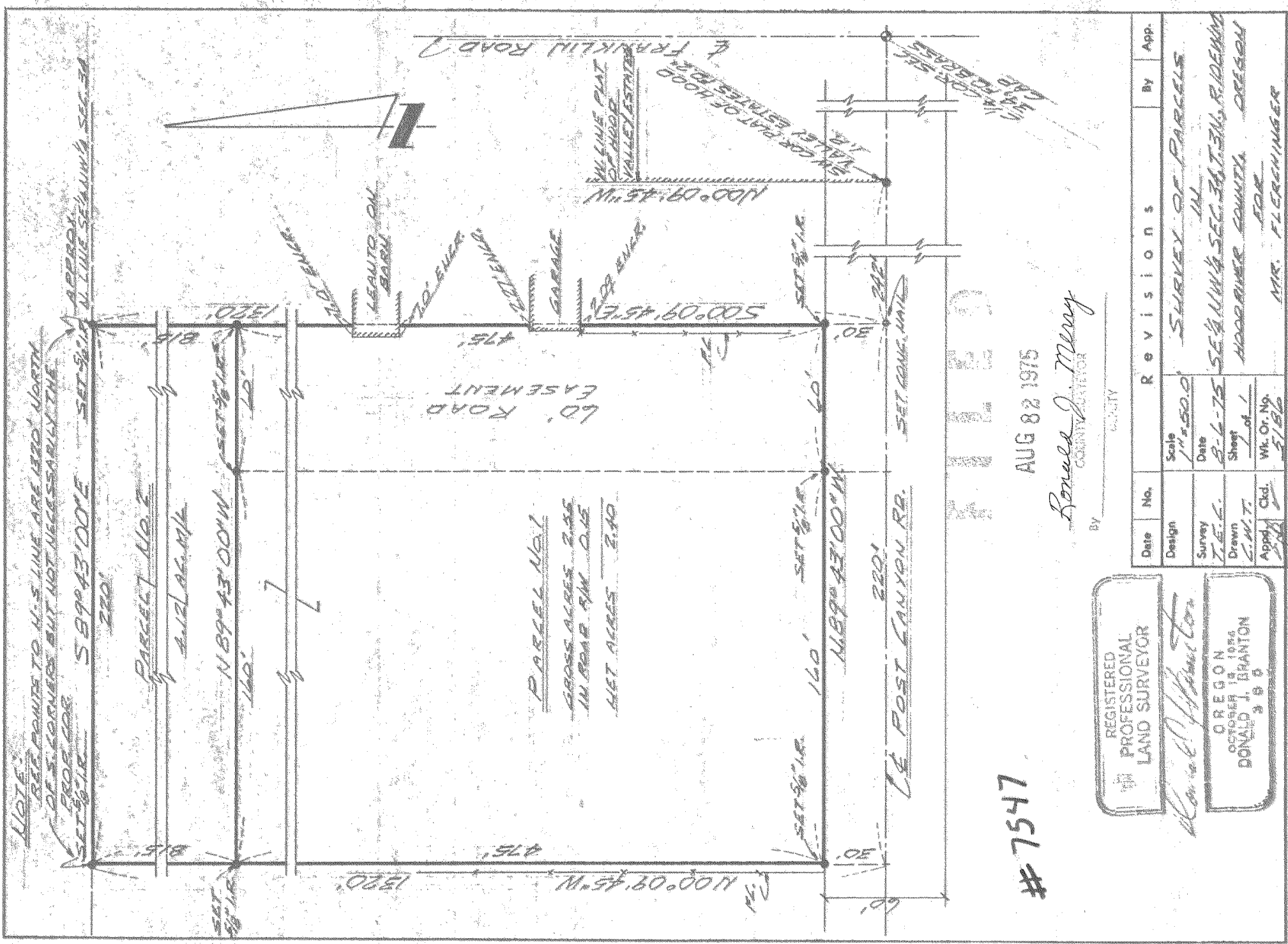
SECTION 5 899 43' 00" E SET 5/8" I.R. APPROX. N. LINE SECTION 5

PARCEL NO. 2
2.12 AC. MK

N 89° 43' 00" W SET 5/8" I.R.

PARCEL NO. 1
GROSS ACRES 2.45
IN ROAD 5/8" I.R. 0.15
NET ACRES 2.40

60' ROAD
EASEMENT



7547

AUG 8 2 1975

By *Ronald J. Branton*
COUNTY SURVEYOR

REGISTERED
PROFESSIONAL
LAND SURVEYOR

Ronald J. Branton

OREGON
OCTOBER 14 1966
DONALD J. BRANTON
3 8 8

Date	No.	Revisions	By	App.
Design				
Survey				
Drawn				
App'd				
Scale	1" = 50.0'			
Date	8-6-75			
Sheet	1 of 1			
Wt. Or. No.	5156			
		SURVEY OF PARCELS		
		IN		
		SECTION 5, T41N, R12E, N1/2		
		HOOPER COUNTY		
		OREGON		
		FOR		
		MRS. FLECHINGER		