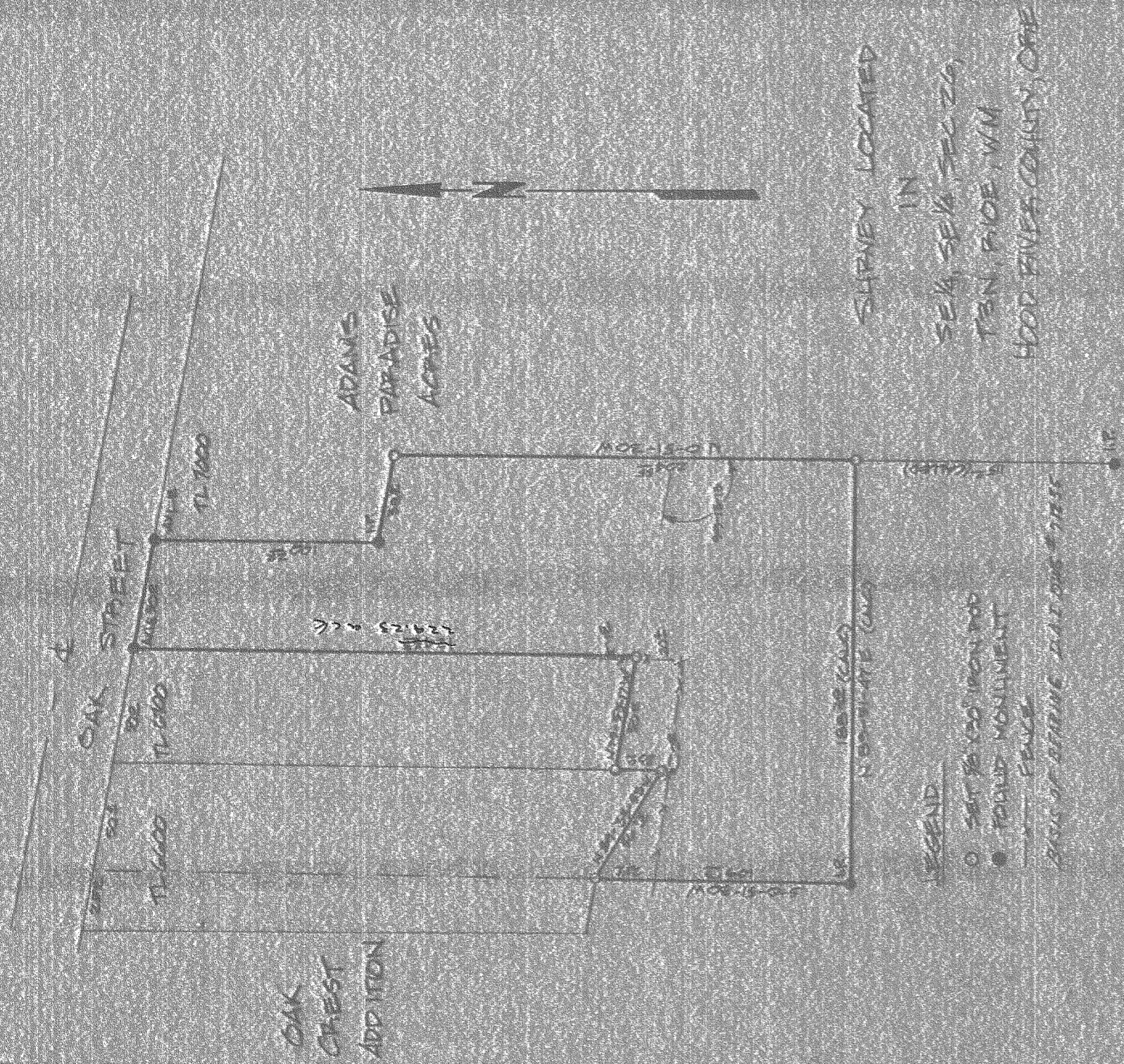


CEAD 5-1-75



SURVEY LOCATED
IN
SE 1/4 SE 1/4 SE 1/26,
T8N R10E W1M
HOOD RIVER COUNTY, ORE

FILED

JUN 2 1975

Ronald C. May
COUNTY SURVEYOR

DEPUTY

REGISTERED
PROFESSIONAL
LAND SURVEYOR

OREGON
JULY 2, 1968
ANTHONY C. KLEIN
9-3-75

SURVEY OF
BLANCH KORTBA ESTATE
FOR
WAYNE ANNALA
HOOD RIVER, OREGON

FILED	DATE	BY
	JUN 2 1975	R. C. MAY



75 38

9-1-75