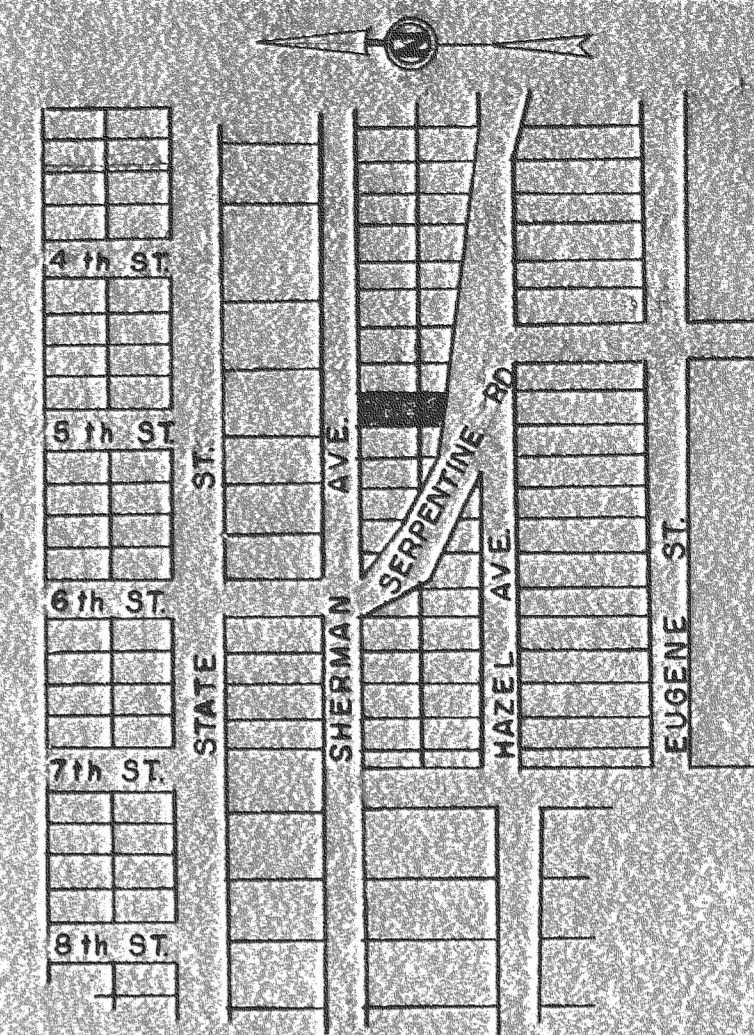
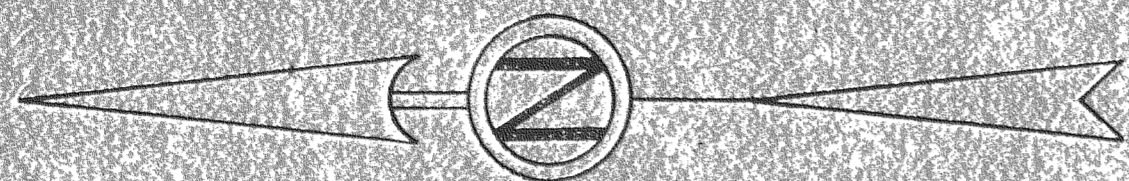
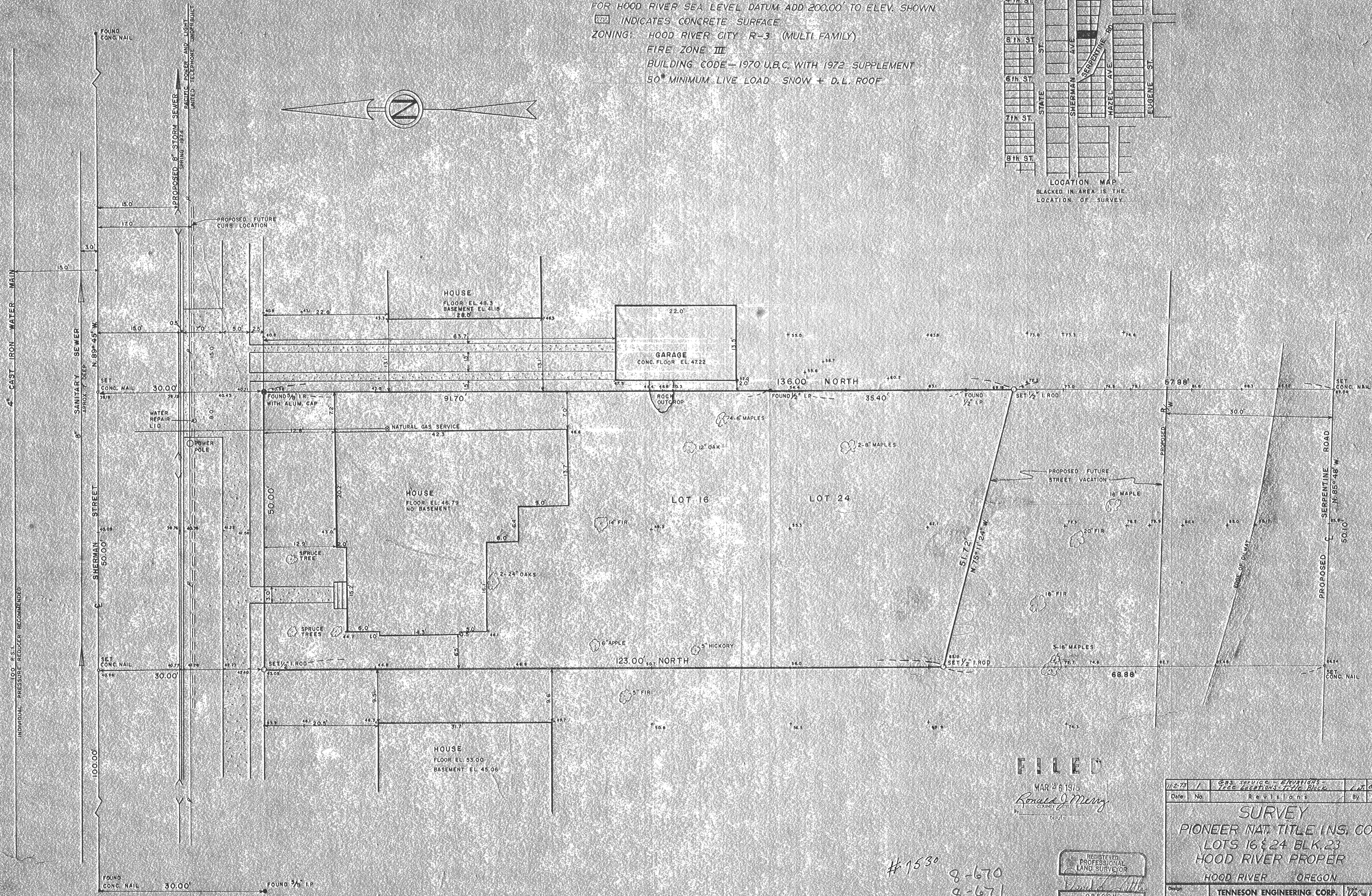


GENERAL NOTES

FOR HOOD RIVER SEA LEVEL DATUM ADD 200.00' TO ELEV. SHOWN
 [Hatched Box] INDICATES CONCRETE SURFACE
 ZONING: HOOD RIVER CITY R-3 (MULTI FAMILY)
 FIRE ZONE III
 BUILDING CODE—1970 U.B.C. WITH 1972 SUPPLEMENT
 50# MINIMUM LIVE LOAD SNOW + D.L. ROOF



LOCATION MAP
 BLACKED IN AREA IS THE
 LOCATION OF SURVEY



FILED

MAR 26 1973
 Ronald J. Mery
 COUNTY CLERK

#1530
 8-670
 8-671



Date	11-2-73	No.	1	Revisions	By	App.	
SURVEY PIONEER NAT. TITLE INS. CO. LOTS 16 & 24 BLK. 23 HOOD RIVER PROPER HOOD RIVER OREGON							
Design	TENNESON ENGINEERING CORP.					Scale	1/8"=1'
Survey	DAVID S. TUTTLE					Date	10-29-73
Drawn	DLT	Checked	LEJ	Approved	Work Order No.	Sheet	
					5008	1 of 1	

#7530