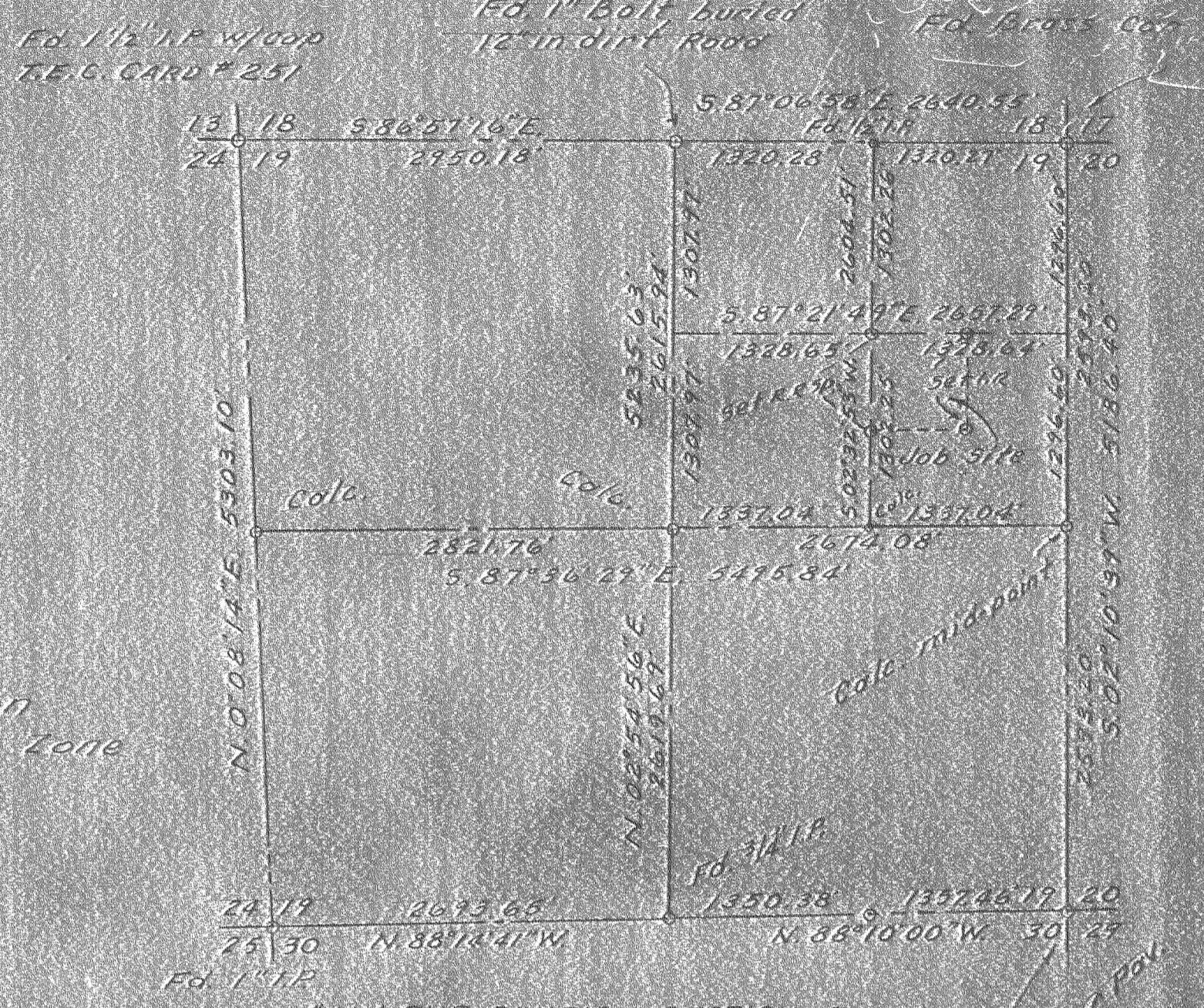
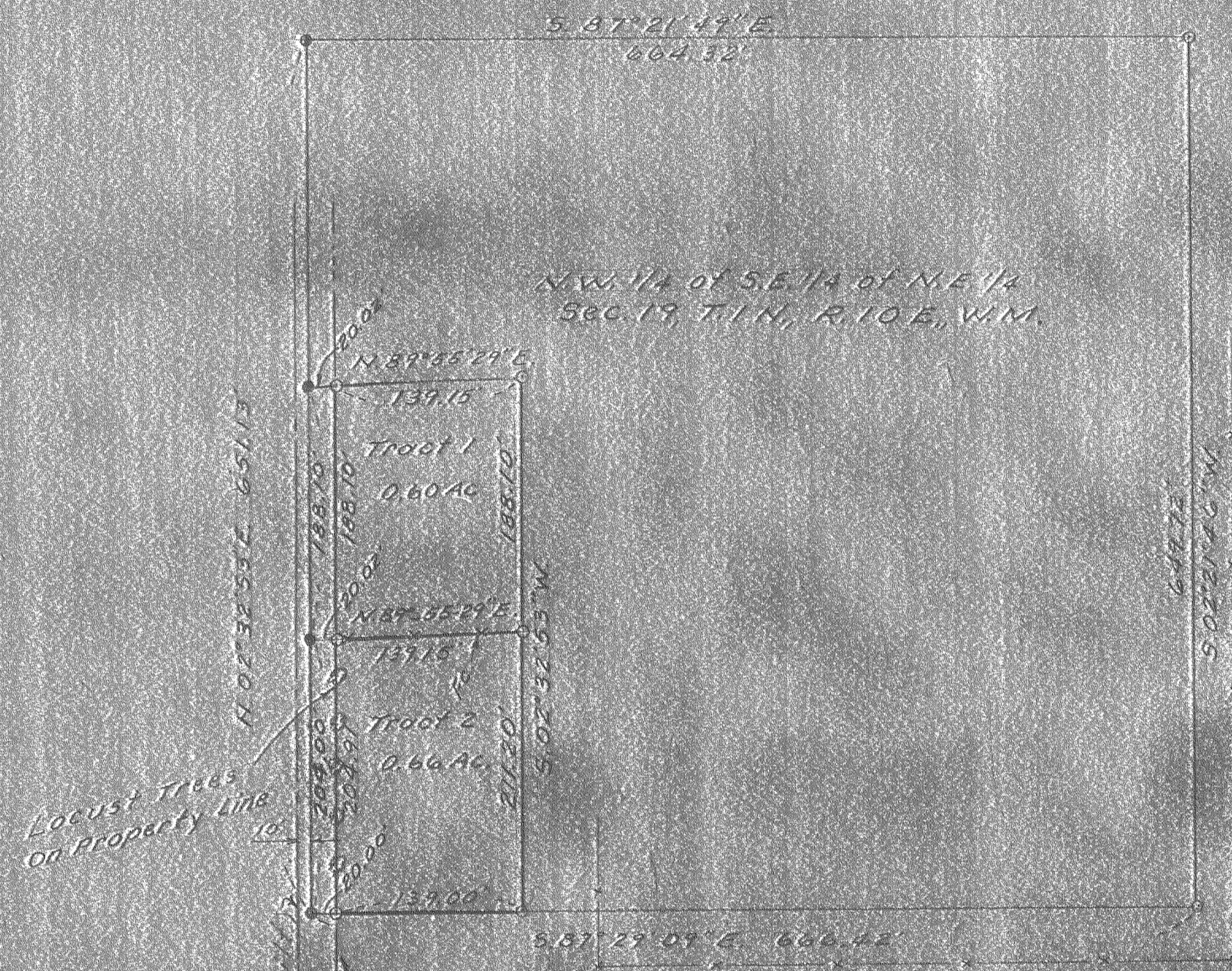


RECEIVED
DATE 11/27/75



NOTE:
Bearings are based on
Oregon Grid, North Zone
 $\theta = 0^{\circ}49'00''$
G.F. = 0.99979593



Locust trees
on property line

LEGEND
o = Set Iron rod
• = Set RR spike

FILED

MAR 26 1975

Ronald J. Munn
COUNTY CLERK
DEPUTY

Date	No.	Revisions	By	App.
SURVEY FOR LOTTIE MILLER IN NW 1/4 OF SE 1/4 OF NE 1/4 SEC. 19, T. 1 N., R. 10 E., W. 1 M. HOOD RIVER COUNTY, OREGON				
Design	TENNESON ENGINEERING CORP. Consulting Engineers 412 West Second Place The Dalles, Oregon			Scale 1" = 100'
Survey	01			Date 10-7-74
Drawn	V.C.	Checked	Approved	Work Order No. 5106

#7529

#7529 6-209