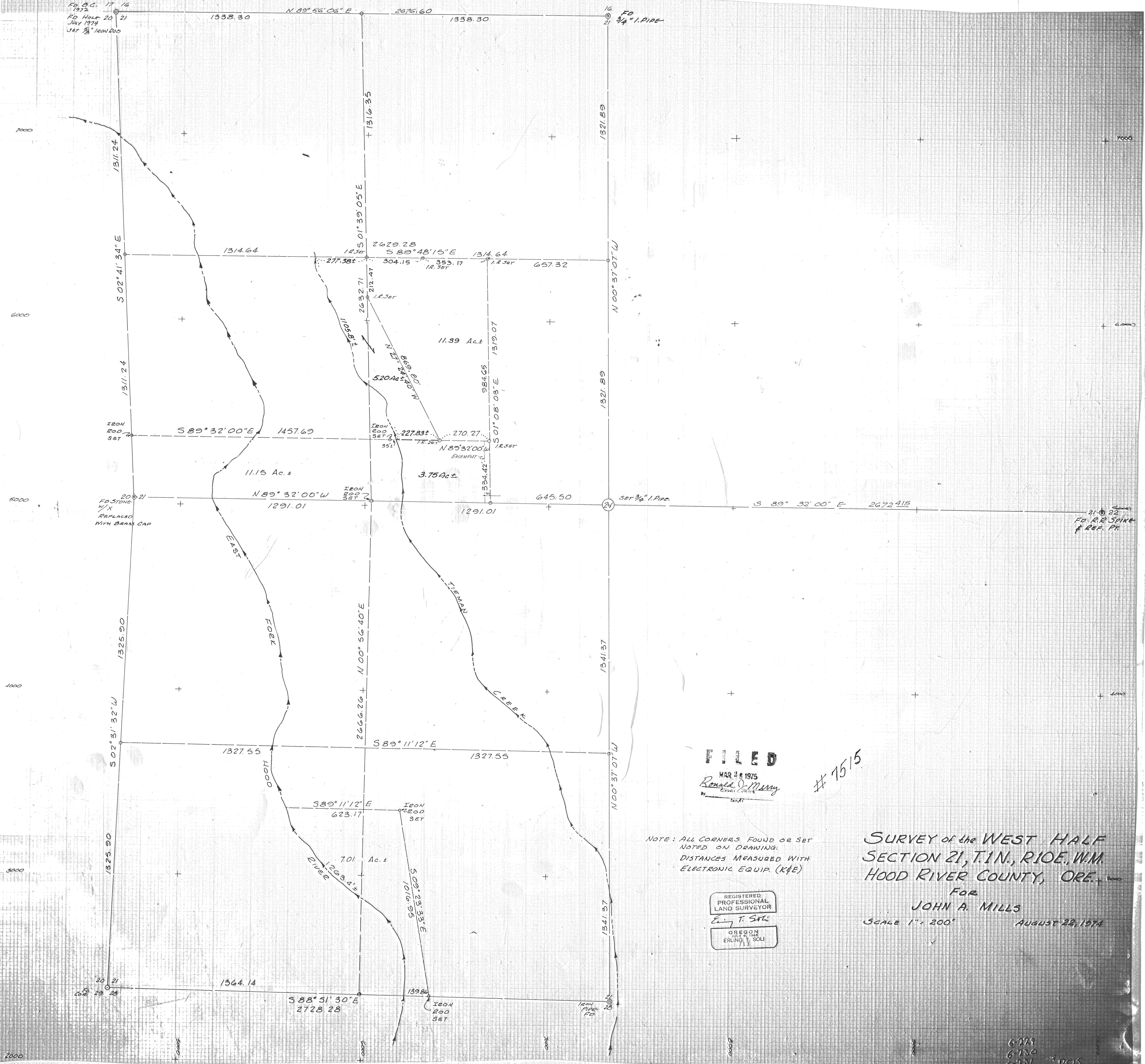


FD B.C. 17 16  
1972  
FD Holt 20 21  
July 1974  
Set 3/4" Iron Rod

FD  
3/4" I. PIPE



**FILED**

MAR 26 1975  
Ronald O. Murray  
Surveyor

# 7515

NOTE: ALL CORNERS FOUND OR SET NOTED ON DRAWING.  
DISTANCES MEASURED WITH ELECTRONIC EQUIP. (K&E)

REGISTERED PROFESSIONAL LAND SURVEYOR  
E. T. SFL

OREGON  
JULY 27 1968  
ERLING & SOLI

SURVEY of the WEST HALF SECTION 21, T.1N., R.10E., W.M. HOOD RIVER COUNTY, ORE.

FOR JOHN A. MILLS  
SCALE 1" = 200' AUGUST 22, 1974

6-779  
6-780  
6-781 # 7515  
6-782