

F I L E D

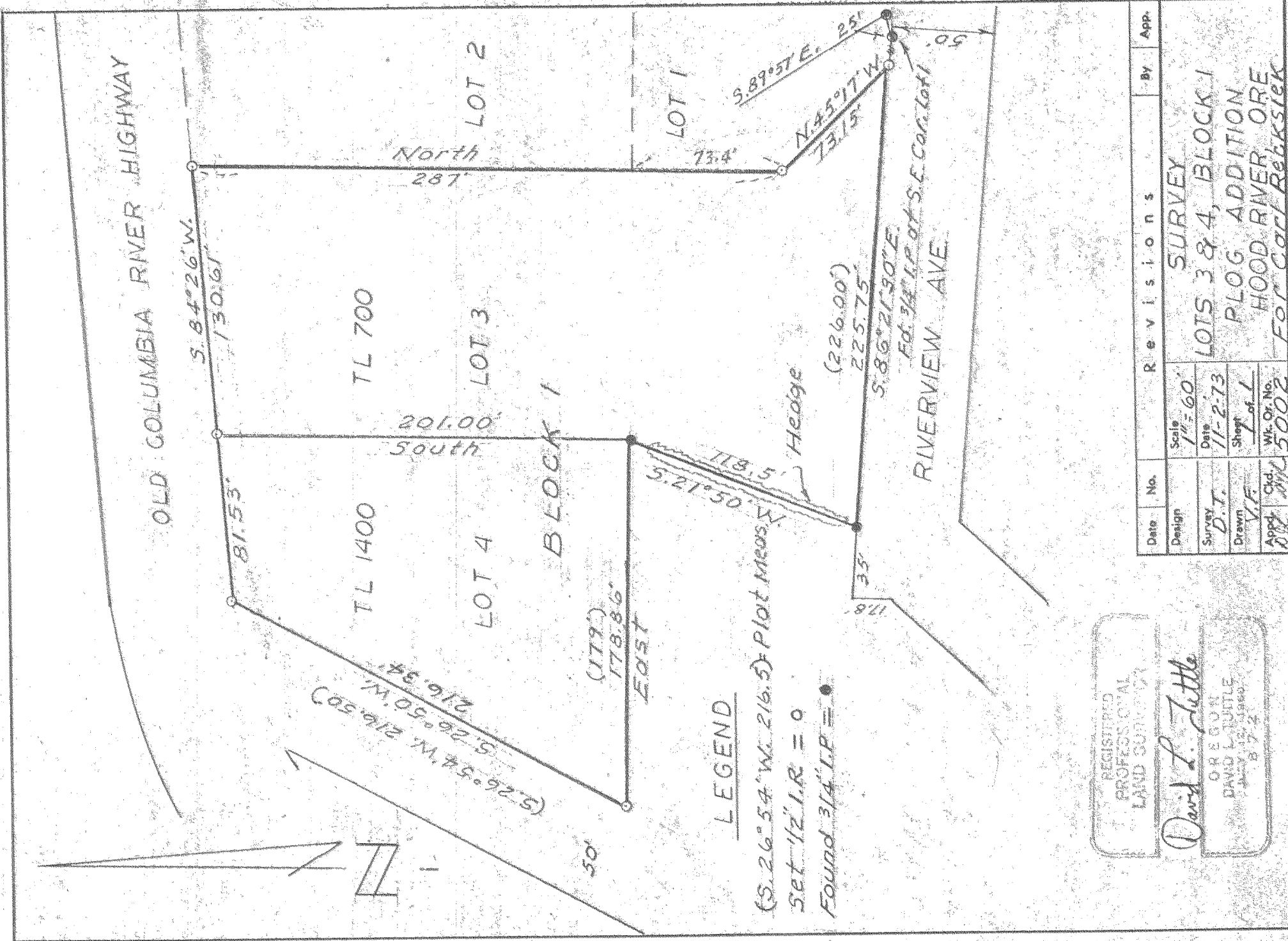
RECEIVED
DATE 11/19/73

MAR 26 1975

By *Ronald J. Murray*
COUNTY SURVEYOR

DEPUTY

#1512



REGISTERED
PROFESSIONAL
LAND SURVEYOR

David L. Tuttle

OREGON
DAVID L. TUTTLE
Surveyor License
872

| Date | No. | Revisions | By | App. |
|------------|----------|---------------------|----|------|
| Design | | | | |
| Survey | | SURVEY | | |
| Drawn | | LOTS 3 & 4, BLOCK 1 | | |
| App'd | | PLOG ADDITION | | |
| | | HOOD RIVER ORE | | |
| | | FOR CARL REBKSIK | | |
| Scale | 1" = 60' | | | |
| Date | 11-2-73 | | | |
| Sheet | 1 of 1 | | | |
| W. Or. No. | 5002 | | | |

TENNESON ENGINEERING CORP. — CONSULTING ENGINEERS — The Dalles — Oregon

NW 1/4 SEC 31 T3N R1E #7512