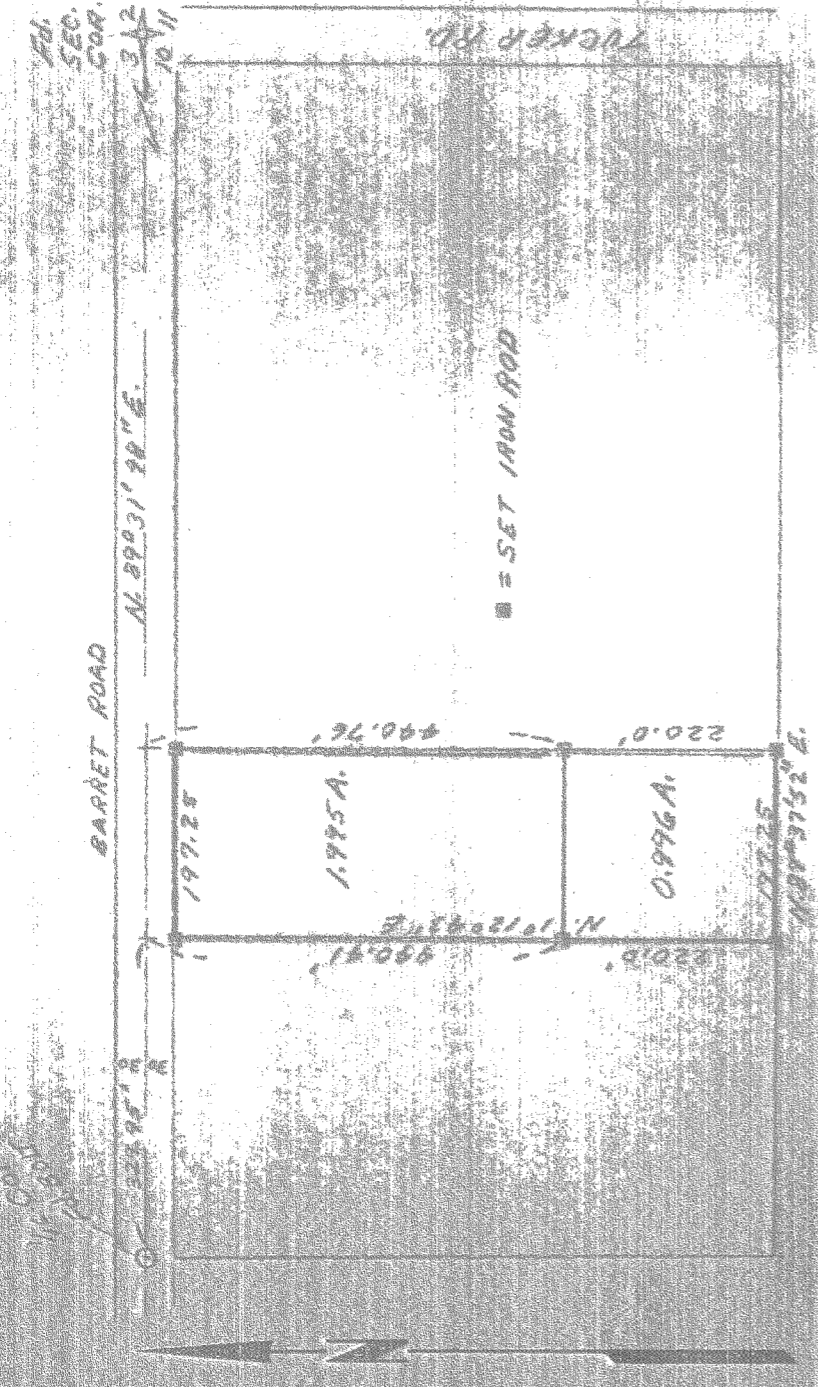


RECEIVED

DATE 6/19/74



F I L L E D

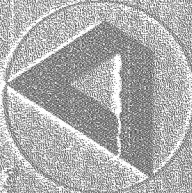
MAR 26 1975

Ronald J. Murray
COUNTY SURVEYOR

BY _____
DEPUTY

REGISTERED
PROFESSIONAL
LAND SURVEYOR

ANTHONY C. KEM
OREGON
1956



Dietschneider
Associates Inc
No. 814 South St.
Hood River, Oregon 97031

SURVEY FOR
MINE FOWLER
IN NEVA NE 1/4
SECTION 24, RANGE
1000, T12N, R12E, S12E

7504

7-080

65