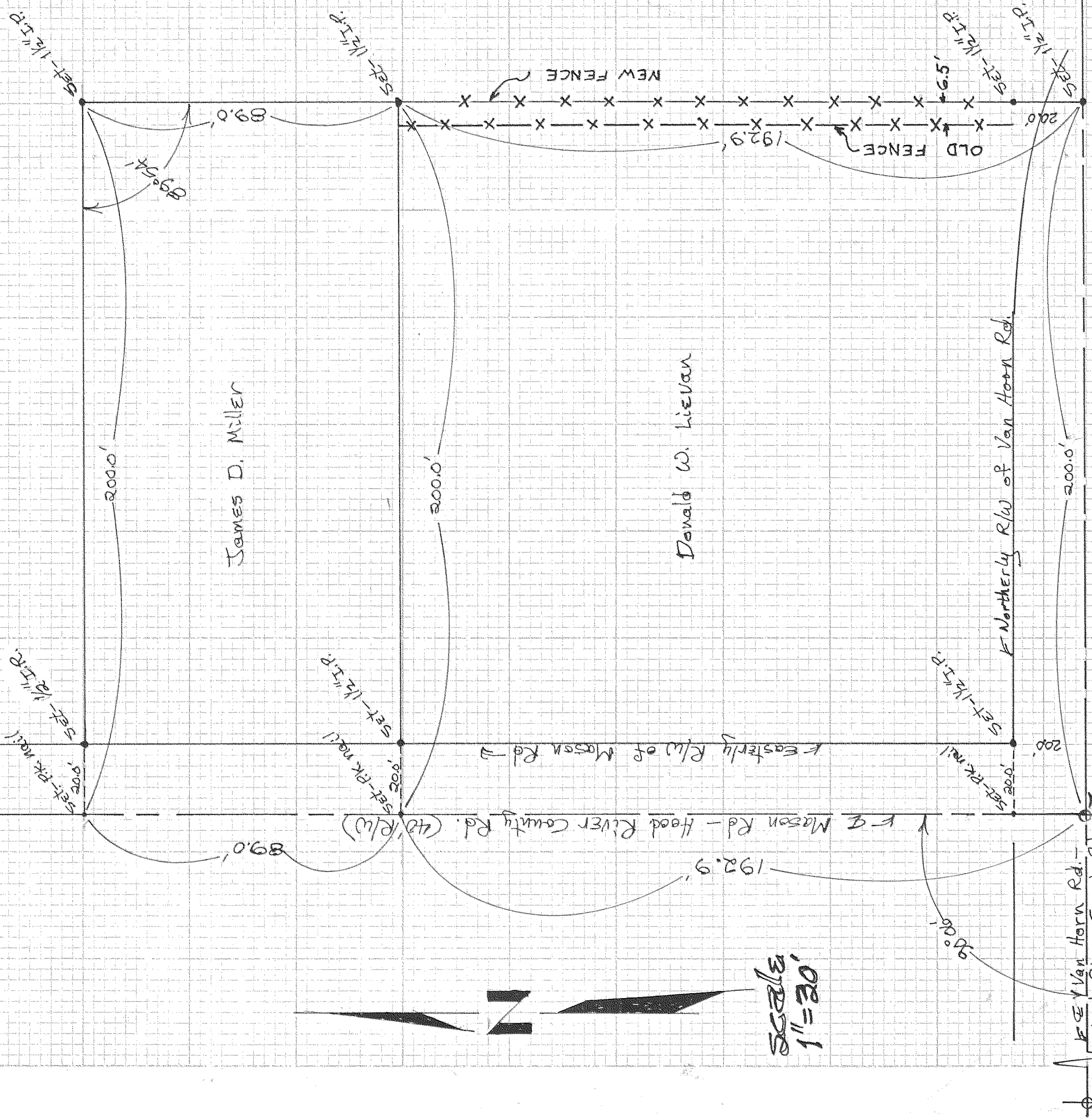
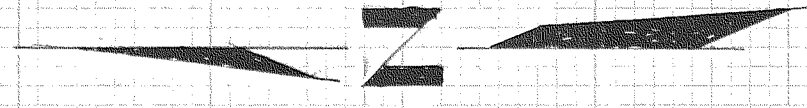


7370



James D. Miller

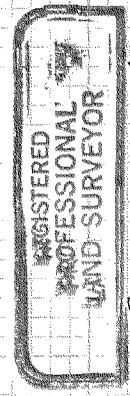
Donald W. Lievan



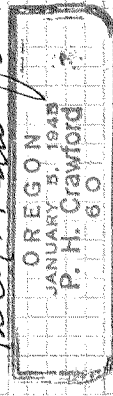
Scale 1" = 20'

Found Railroad Spike
 Southwest corner of the
 Northeast 1/4 of the
 Southeast 1/4 of Section
 13, T.2N, R.10E., W.M.

S.W. cor.
 of the N.W. 1/4
 of the S.E. 1/4
 of Sec. 13, T.2N,
 R. 10E., W.M.



P. H. Crawford



19 June 1974

REVISED 19 MAR 75 - H. BROWN

FILED

MAR 31 1975
 Ronald J. Mury
 COUNTY SURVEYOR
 DEPUTY

7370

7-173