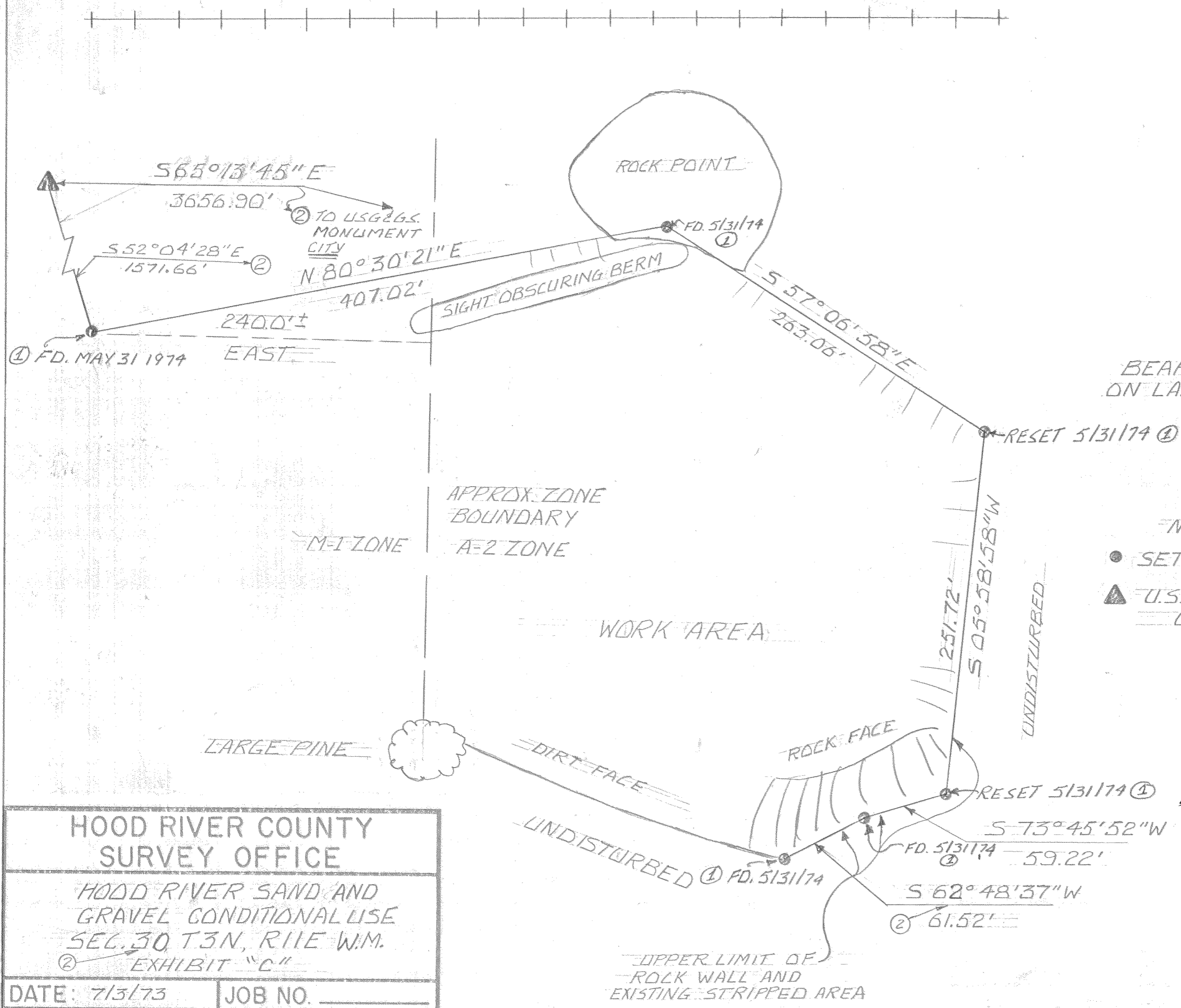


7329

RAILROAD TRACK



BEARINGS BASED ON LAMBERT GRID

NOTE:

- SET REBAR
- ▲ U.S. G. & G. S. STATION CLOVER

HOOD RIVER COUNTY SURVEY OFFICE

HOOD RIVER SAND AND GRAVEL CONDITIONAL USE SEC. 30 T.3N, R.1E W.M. EXHIBIT "C"

DATE: 7/3/73	JOB NO. _____
SCALE: 1"=60'	FILE NO. _____
DRAWING: W.G. BROWN	SHEET 1 OF 1

① REVISED 5131/74 W.C.B.
 REVISION NOTED ACK 5/31/74

② REVISED TO COMPLY WITH FIELD NOTES FILED JULY 27, 1973 W.C.B.

DEPUTY
 COUNTY SHERIFF
Carole Ann Ebersole
 JUL 27 1973
FILED

