

#7322

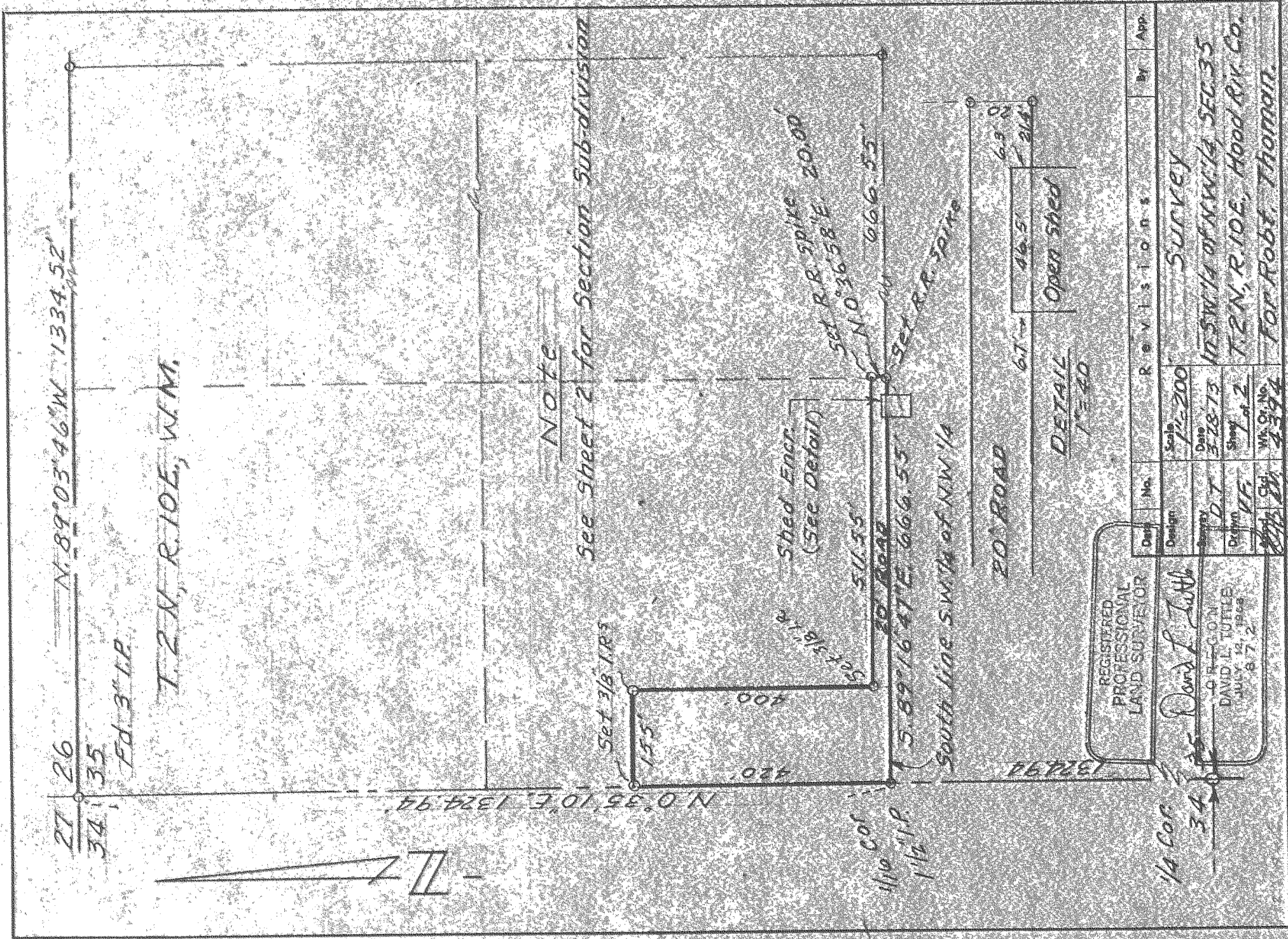
FILED

JUL 27 1973

Carole Van Ebbesen
COUNTY SURVEYOR

RECEIVED
DATE 4/18/73

By _____
DEPUTY



Note

See Sheet 2 for Section Sub-division

REGISTERED
PROFESSIONAL
LAND SURVEYOR

David L. Tuttle
JULY 14, 1948

1/4 Cor
34.0' ±
David L. Tuttle

Date	No.	Revisions	By	App.
		Scale 1/4"=200'		
		Date 3-28-73		
		Sheet of 2		
		W. O. No. 2334		
		17 SW 1/4 of NW 1/4, SEC 35		
		T. 2 N., R. 10 E., Hood Riv. Co.		
		For Robt. Thoman		

