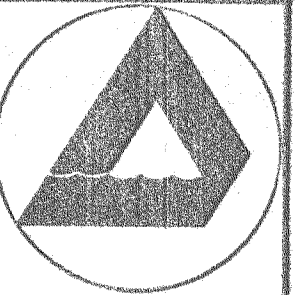


RECEIVED
DATE 5/21/73



No. 8 Fourth Street
Hood River, Oregon 97031

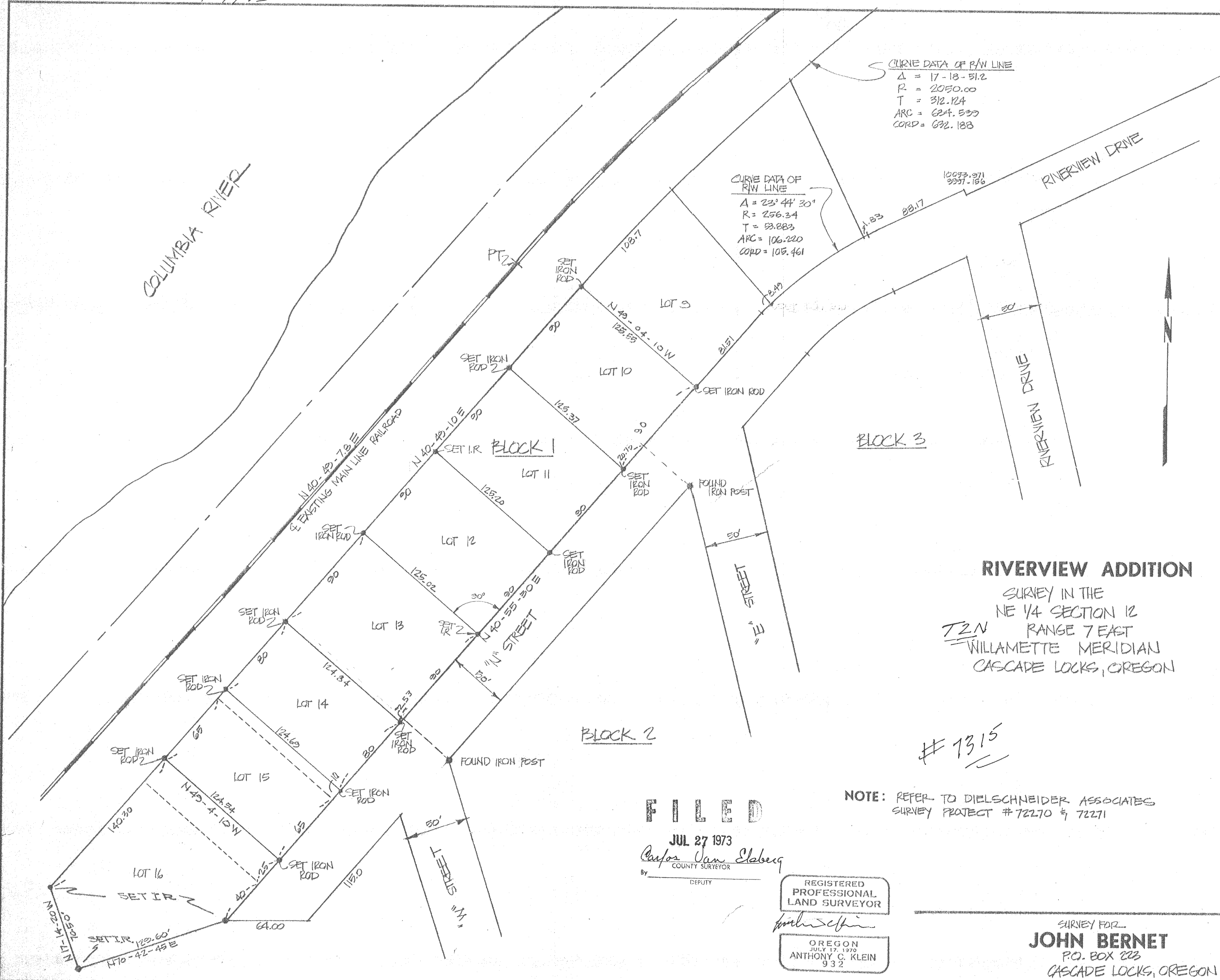
Dielschneider Associates Inc

Engineering Surveying Data Processing

Date	24 APRIL 1973
Drawn	GWA
Survey	ACK
Design	
Checked	
Approved	
Scale	1" = 50'-0"
Project No.	73212
Sheet No.	

CURVE DATA OF R/W LINE
 $\Delta = 17-18-51.2$
 $R = 2050.00$
 $T = 312.124$
 $ARC = 624.533$
 $CORD = 692.188$

CURVE DATA OF R/W LINE
 $A = 23-44-30"$
 $R = 256.34$
 $T = 53.883$
 $ARC = 106.220$
 $CORD = 105.461$



RIVERVIEW ADDITION

SURVEY IN THE
 NE 1/4 SECTION 12
 T2N RANGE 7 EAST
 WILLAMETTE MERIDIAN
 CASCADE LOCKS, OREGON

7315

NOTE: REFER TO DIELSCHNEIDER ASSOCIATES
 SURVEY PROJECT # 72270 & 72271

FILED
 JUL 27 1973
 Carlos Van Elberg
 COUNTY SURVEYOR
 By _____
 DEPUTY

REGISTERED
 PROFESSIONAL
 LAND SURVEYOR

OREGON
 JULY 17, 1970
 ANTHONY C. KLEIN
 932

SURVEY FOR
JOHN BERNET
 P.O. BOX 223
 CASCADE LOCKS, OREGON

7315
 6-435