

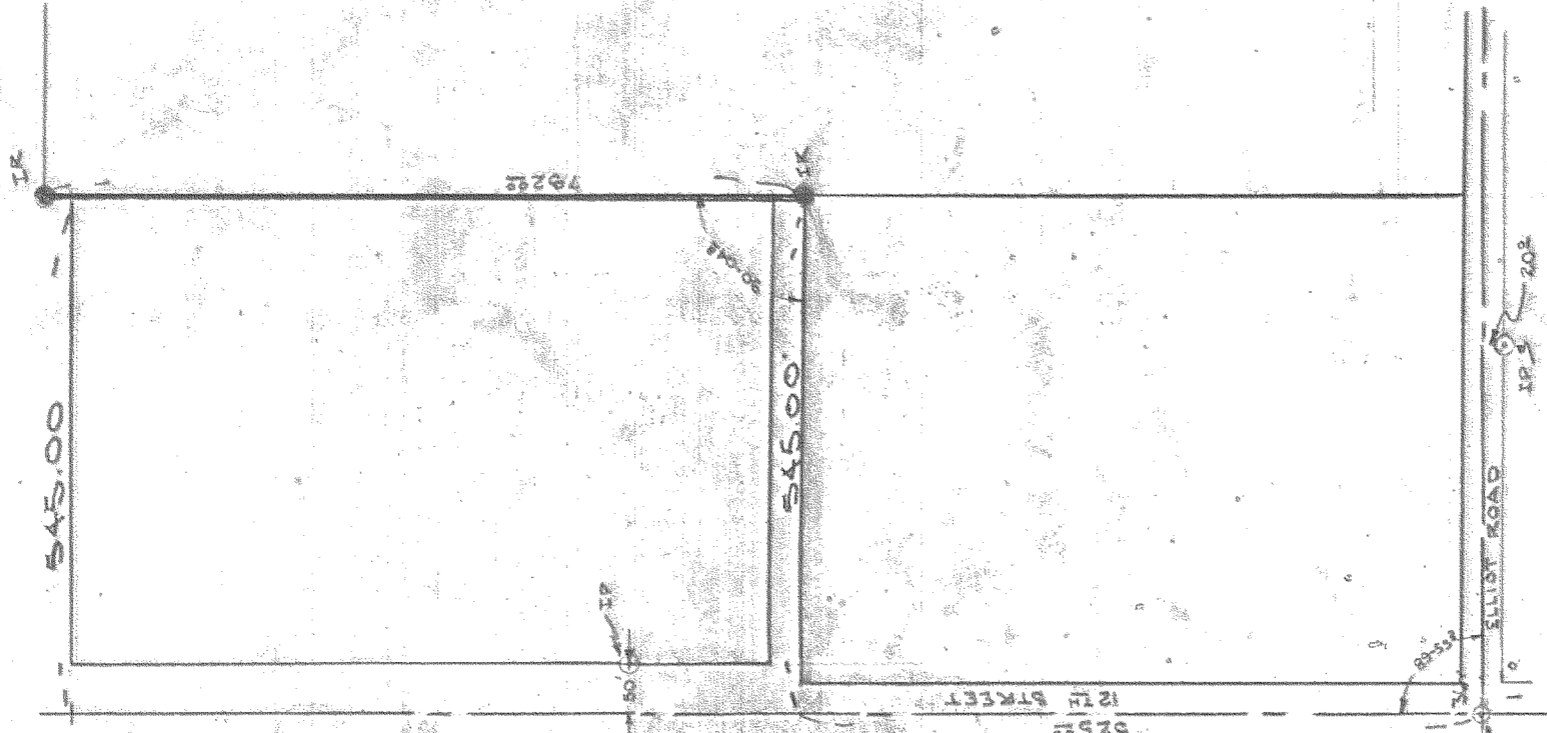
F I L E D

DEC 15 1972

Carole Ann Glaberg
COUNTY SURVEYOR

BY _____
DEPUTY

#7252



SCALE 1" = 200'

SURVEY LOCATED

1 IN

SW 1/4 SECTION 36
T. 3 N., R. 10 E., W. 4 M.
IN HOOD RIVER COUNTY,
OREGON

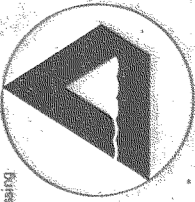
REGISTERED
PROFESSIONAL
LAND SURVEYOR

Anthony C. Klein

OREGON
JULY 17, 1970
ANTHONY C. KLEIN
9 3 2

DATE	DRAWN
11-13-1972	R. GAYLORD
SURVEY	DESIGN
J.P.R.	APPROVED
CHECKED	A.C.K.
SCALE	1" = 200'
PROJECT NO.	72275

Engineering Surveying Data Processing



**Dielschneider
Associates Inc**
No. 8 Fourth St.
Hood River, Oregon 97031

SURVEY

FOR

ZIMEL REALTY, INC.

K&E ALABAMA®
TRACING PAPER

#7252

8-614