

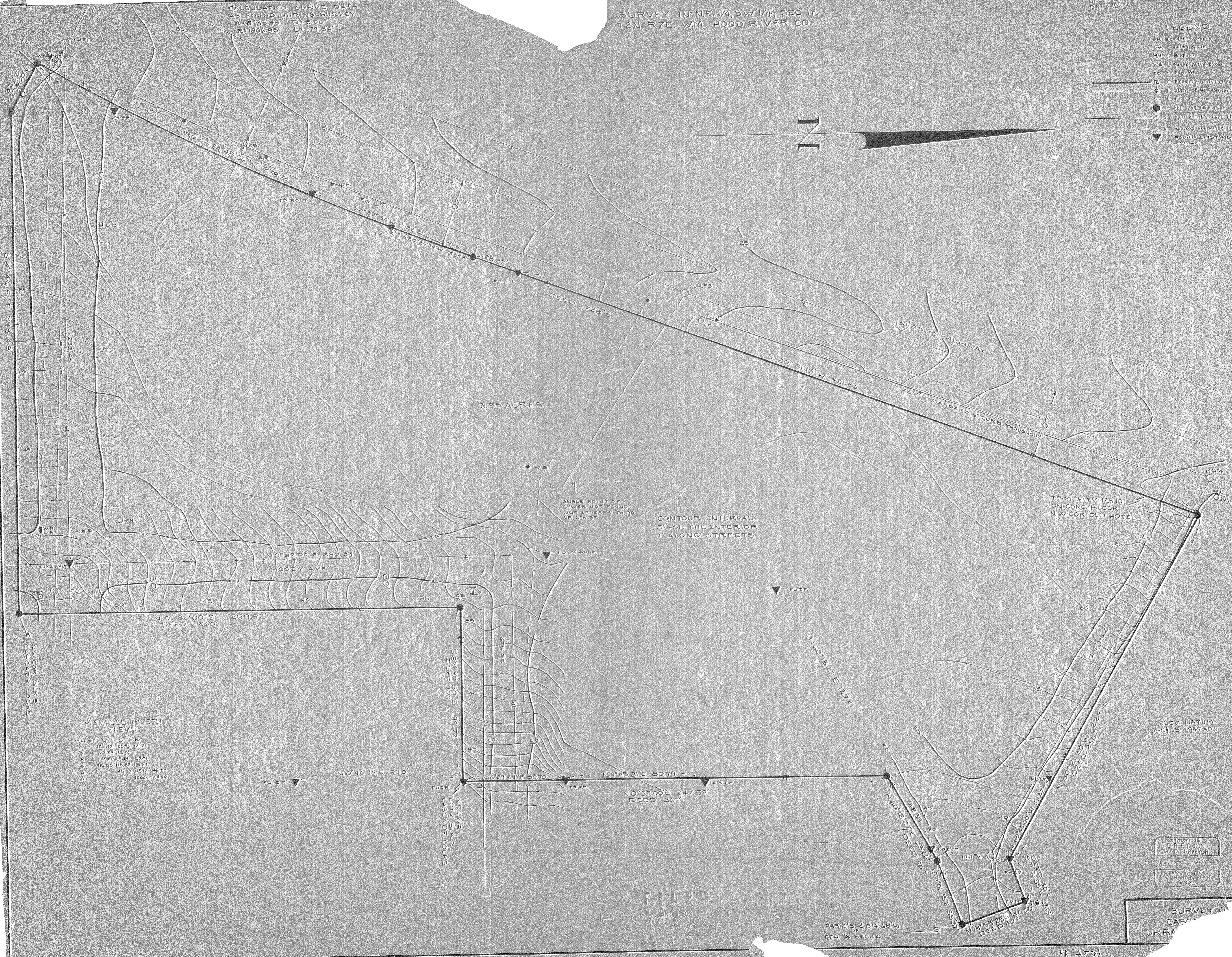
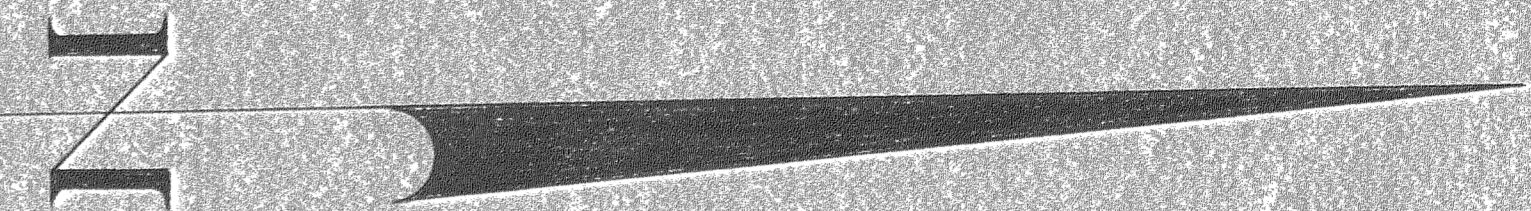
CALCULATED CURVE DATA
AS FOUND DURING SURVEY
Δ: 8°55'48" D: 3.06'
R: 1866.85' L: 279.84'

SURVEY IN N.E. 1/4, SW 1/4, SEC. 12,
T2N, R7E, WM. HOOD RIVER CO.

RECEIVED
DATE 1/1/72

LEGEND

- FA = Fire Hydrant
- CB = Catch Basin
- M.H. = Manhole
- WB = Water Valve Boxes
- EO = Edge Of
- = Boundary of Urban Reveal Area
- = Right of Way Centerline
- FC = Face of Curb
- = Set 3/4" Iron Pipe
- = Approximate sewer line
- = Approximate water line
- ▼ = FOUND EXISTING SURVEY POINT



3.85 ACRES

ANGLE POINT OF
SEWER NOT FOUND
LINE APPEARS TO GO
UP HILL

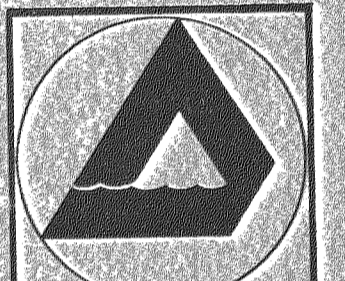
CONTOUR INTERVAL
5' FOR THE INTERIOR
1' ALONG STREETS

TBM ELEV 123.10
ON CONC BLOCK
N.W. COR. OLD HOTEL

MANHOLE INVERT
ELEVS

M.H.	N	S	E	W
1	123.90	123.95	121.21	
2	122.03	122.04		
3	119.82	119.84	119.01	
4	116.85	116.82	115.51	
5	145.30	145.12	145.00	
6		128.22	128.60	

ELEV. DATUM
USCGA 65 1947 ADL



No. 8 Fourth Street
Hood River, Oregon 97031

Dielschneider Associates Inc
Engineering Surveying Data Processing

Date	NOV 30 1971
Drawn	A. KLEIN
Survey	A. KLEIN
Design	
Checked	
Approved	
Scale	1" = 20'
Project No.	74263
Sheet No.	1

REGISTERED
OREGON
LAND SURVEYOR

ANTHONY A. KLEIN
932

FILED

JAN 3 1972

Dielschneider Associates Inc
Hood River, Oregon 97031

SURVEY OF
CASCADE
URBAN

949.215, 2.514.68' W
CEN. 1/4 SEC. 12.

1091