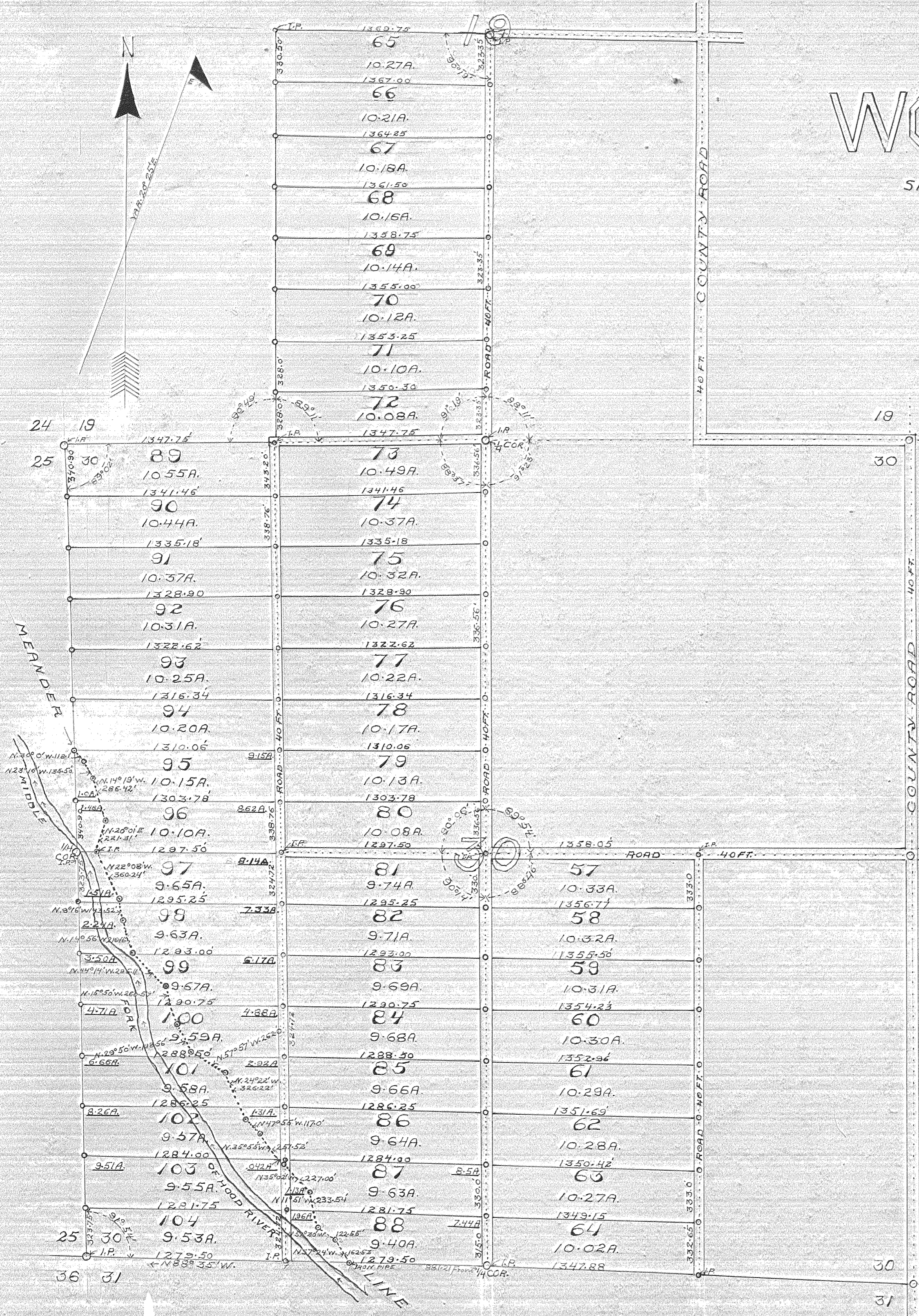


# ADDITION OF 1920 TO WOODWORTH ACRES

SITUATED IN SECTIONS 19<sup>th</sup> & 30, T.1N.R.10E.W.M. HOOD RIVER COUNTY, OREGON.

SCALE-1/4" = 500 FT.



### DEDICATION.

Know all men by these presents, that the Oregon Lumber Co., a corporation organized and existing under and by virtue of the state of Utah, does hereby declare that it is the owner of the land represented on this plat and designated as "Addition of 1920 To Woodworth Acres" and divided into lots of the dimensions shown and numbered from 57 to 104 inclusive; that it has laid out thereon roads as indicated and by these presents does hereby dedicate them all in perpetuity to the use and service of the public.

In witness thereof, the Oregon Lumber Co. has caused these presents to be executed by its President and Secretary and the seal of said corporation to be affixed this ..... day of ..... 1920.

Oregon Lumber Company  
By: *David L. Eccles* President  
Oregon Lumber Company  
By: *W. B. Porter* Secretary

State of Utah } ss  
County of Weber }  
On this 17<sup>th</sup> day of July, 1920 before me appeared *David L. Eccles* and *W. B. Porter* both to me personally known, who being duly sworn did say that he, *David L. Eccles*, is the president and that he, *W. B. Porter*, is the secretary of the Oregon Lumber Co., the corporation executing the foregoing instrument, and that the seal affixed to the said instrument is the corporate seal of said corporation, and that said instrument was signed and sealed in behalf of said corporation by authority of its Board of Directors, in testimony thereof, I have hereto set my hand and affixed my official seal the day and year first written in this my certificate.

My commission expires Dec. 7, 1922  
*H. M. Morrison*  
Notary Public for State of Utah.

### SURVEYORS CERTIFICATE.

State of Oregon, } ss  
County of Hood River }  
I, *Elbert E. Newell*, first being duly sworn, depose and say, that I have correctly surveyed and marked with proper monuments the land represented on this plat and designated as "Addition of 1920 To Woodworth Acres", and laid out in lots numbered from 57 to 104 inclusive, the same being a portion of sections 19<sup>th</sup> & 30 in T.1N.R.10E., W.M. Hood River county, Oregon, and at the initial point of said survey, which is the 1/4 Sec. Cor. between said sections 19<sup>th</sup> & 30 I have set an iron pin 3 Ft. long, driven to the surface of the ground.

*Elbert E. Newell* Surveyor  
Licensed Engineer No. 532, State of Oregon.  
Subscribed and sworn to before me this 10<sup>th</sup> day of July, 1920.  
*Rose L. Meier*  
Notary Public for State of Oregon.

My commission expires July 16, 1923  
Approved *July 24* 1920  
Approved *July 26* 1920  
Approved *August 4* 1920  
*Jasper Wickham* County Assessor.  
*A. C. Guitchank* County Surveyor.  
*L. N. Blowers* County Commissioner.  
*J. H. Hamman* County Commissioner.  
*J. H. Blachman* County Commissioner.  
Attest *E. C. Shoemaker* County Clerk  
By *Kent Shoemaker*

STATES OF OREGON, County of Hood River, ss.  
This instrument of writing was filed for record on the 11<sup>th</sup> day of August A. D. 1920 at 10 o'clock A.M. and duly recorded in Vol. 3 of Plat on page 5.  
*E. E. SHOEMAKER* County Clerk.  
*Kent Shoemaker* Deputy.