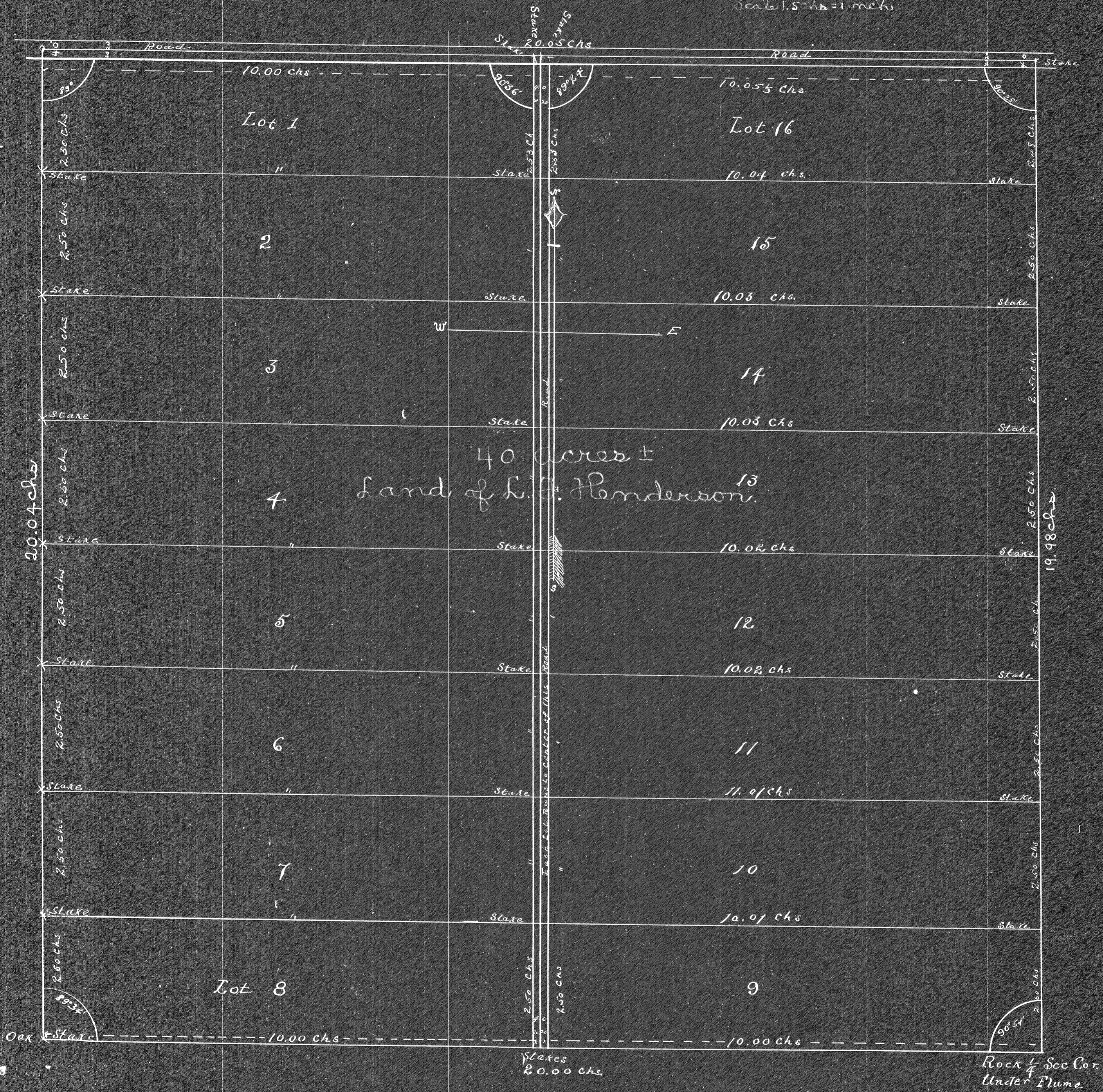


Map
of
S.E. 1/4 of N.E. 1/4 Sec. 34,
Town 3 N., Range 10 E., W.M. Wasco Co. Ore.
Surveyed by J.L. Henderson
July 1905.

Scale 1.5" = 1 inch



Transcribed from Records of Wasco County
Plat Book No. 1, page 8.

Dedication shown in Book N Deeds, page 202.