

APR 3 1969

K. W. Kirby
E. Shirley

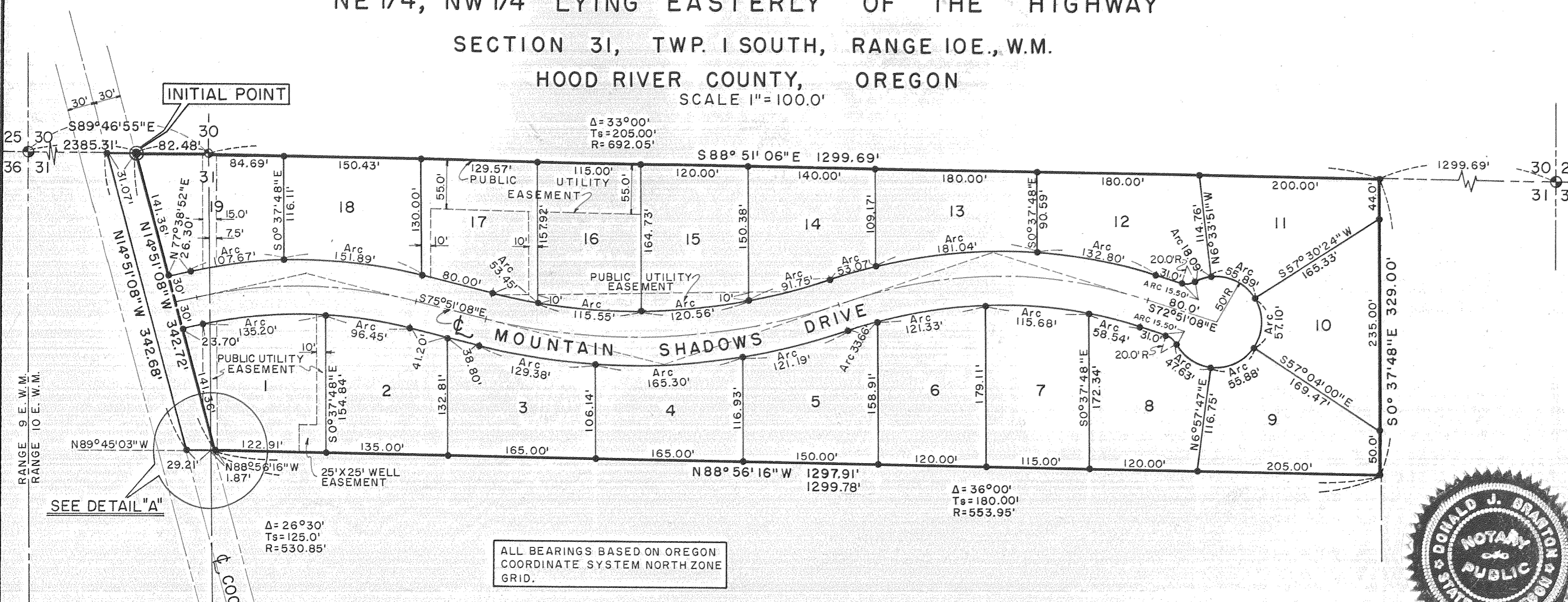
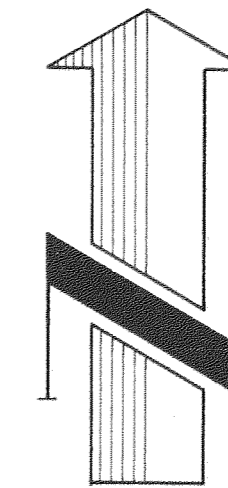
PLAT OF MOUNTAIN SHADOWS

THE N 1/2, N 1/2, NW 1/4, NE 1/4 AND THE N 1/2, N 1/2, NE 1/4, NW 1/4 LYING EASTERLY OF THE HIGHWAY

SECTION 31, TWP. 1 SOUTH, RANGE 10 E., W.M.

HOOD RIVER COUNTY, OREGON

SCALE 1"=100.0'



ALL BEARINGS BASED ON OREGON COORDINATE SYSTEM NORTH ZONE GRID.

We, Kenneth W. Kirby and D. E. Imbler, Director of Records and Assessments and Director Budget and Finance and Tax Collector respectfully of Hood River County, Oregon, hereby certify that we have examined the annexed plat of MOUNTAIN SHADOWS SUBDIVISION in Hood River County, Oregon, and the name adopted for said plat is a proper name and not included in any other Subdivision in Hood River County and further certify that all assessments due thereon have been fully paid as required by law and we hereby approve, said plat.

K. W. Kirby
Hood River County Director of Records and Assessments

D. E. Imbler
Hood River County Director Budget and Finance and Tax Collector

Subscribed and sworn before me this 19th day of MARCH, 1969.

Donald J. Branton
Notary Public for the State of Oregon

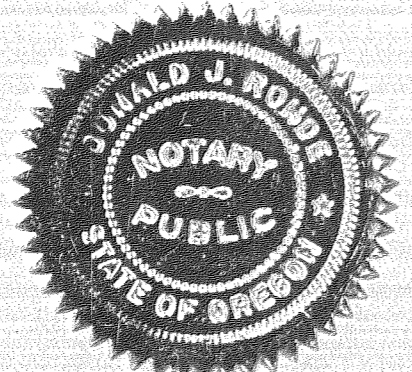
My commission expires 21 July 1972



ENGINEERS CERTIFICATE:

I, Donald J. Branton, registered professional engineer for the State of Oregon, being first duly sworn, depose and say that I have correctly surveyed and marked with legal monuments the land represented on the annexed plat of MOUNTAIN SHADOWS SUBDIVISION in Hood River County, Oregon, that a brass cap monument was set at the initial point, said initial point being S89°46'55"E along the North line of Section 31, Twp. 1 South, Range 10 East, W. M., 2385.31 feet from the Northwest corner of said Section 31, said point further being on the Easterly right of way line of Cooper Spur Road, that the property platted is described as follows:

Beginning at the aforesaid initial point, thence S89°46'55"E along the North line of said Section 82.48 feet to the North one-quarter corner of said Section 31; thence continuing along said North line of said section S88°51'06"E 1299.69 feet to the Northeast corner of the N1/2, N1/2, NW1/4, NE1/4 of said section; thence leaving said North line S0°37'48"E along the East line of said N1/2, N1/2, NW1/4, NE1/4, 329.00 feet to the Southeast corner thereof; thence N88°56'16"W along the South line of said N1/2, N1/2, NW1/4, NE1/4, 1299.78 feet to the Southwest corner thereof; thence N89°45'03"W along the South line of the N1/2, N1/2, NE1/4, NW1/4 of said Section 29.21 feet to the centerline of said Cooper Spur Road; thence N14°51'08"W along said centerline 342.68 feet to a point on the North line of said Section 31; thence leaving said centerline S89°46'55"E along said North line 31.07 feet to the point of beginning.



Subscribed and sworn before me this 23rd day of DEC., 1968.

Donald J. Rohde
Notary Public for the State of Oregon

My commission expires July 21, 1972

DEDICATION:

We, James Hughes and Victoria Hughes husband and wife, as owners in fee simple of the land shown on the annexed plat and more particularly described in the engineers certificate hereunto attached, hereby dedicate to the public forever all parks, streets and easements shown on such plat and that we declare the annexed plat of MOUNTAIN SHADOWS SUBDIVISION to be a correct plat as located in Section 31, Township 1 South, Range 10 East of the Willamette Meridian in Hood River County, Oregon.

By James A. Hughes By Victoria Hughes

On this 14th day of February, 1969, before me a Notary Public for the State of Oregon, personally appeared James Hughes and Victoria Hughes husband and wife, known to me, who first being duly sworn, say that they did sign this instrument of their free and voluntary act.



M. E. Downey
Notary Public for the State of Oregon

My commission expires March 13, 1972

The annexed plat of MOUNTAIN SHADOWS SUBDIVISION was examined and approved this 20th day of MARCH, 1969.

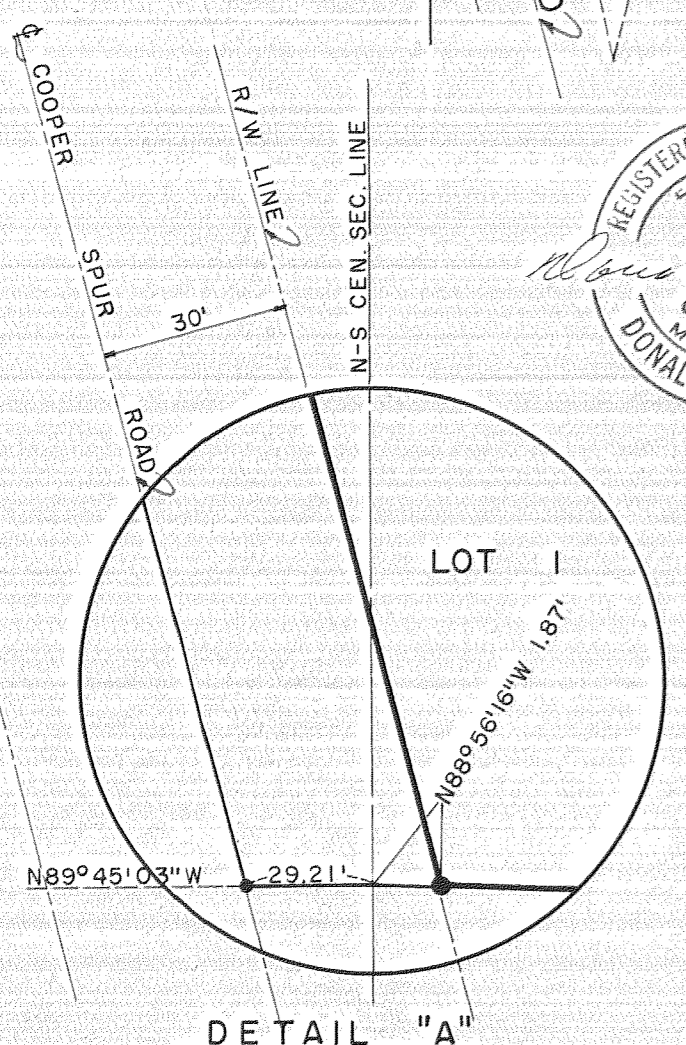
Carla L. Van Elbers
Hood River County Director of Public Works

The annexed plat of MOUNTAIN SHADOWS SUBDIVISION was examined and approved this 18th day of MARCH, 1969.

W. H. Furrer
Hood River County Planning Commission

The annexed plat of MOUNTAIN SHADOWS SUBDIVISION was examined and approved this 19th day of MARCH 1969 by the Hood River Board of Commissioners.

Commissioner *Commissioner*
Commissioner *Commissioner*
Commissioner



DETAIL "A"