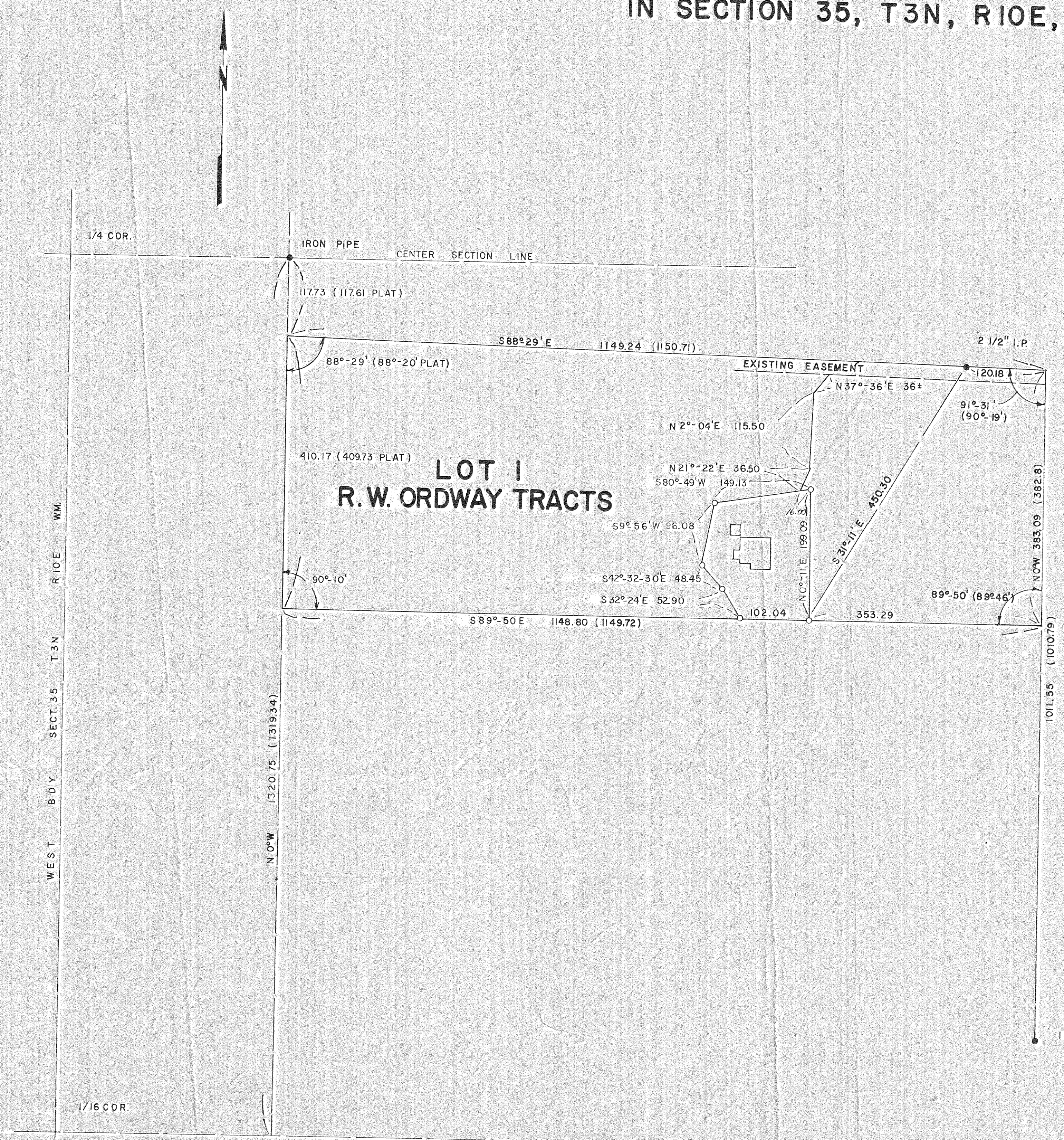


SURVEY FOR R. G. SCEARCE, HOOD RIVER, OREGON
 IN SECTION 35, T3N, R10E, W.M.



● MONUMENT FOUND
 ○ MONUMENT SET

FILED

SEP 28 1971

W. Van Orman
 COUNTY SURVEYOR

#12

SCALE: 1"=100'		DATE: April 27, 1970	JOB: 195
DSN.	WESTECH ENGINEERING		SHEET NO.
DRN.	325 BUSH STREET SE		OF
CKD.	SALEM, OREGON		

10-25 # 1517