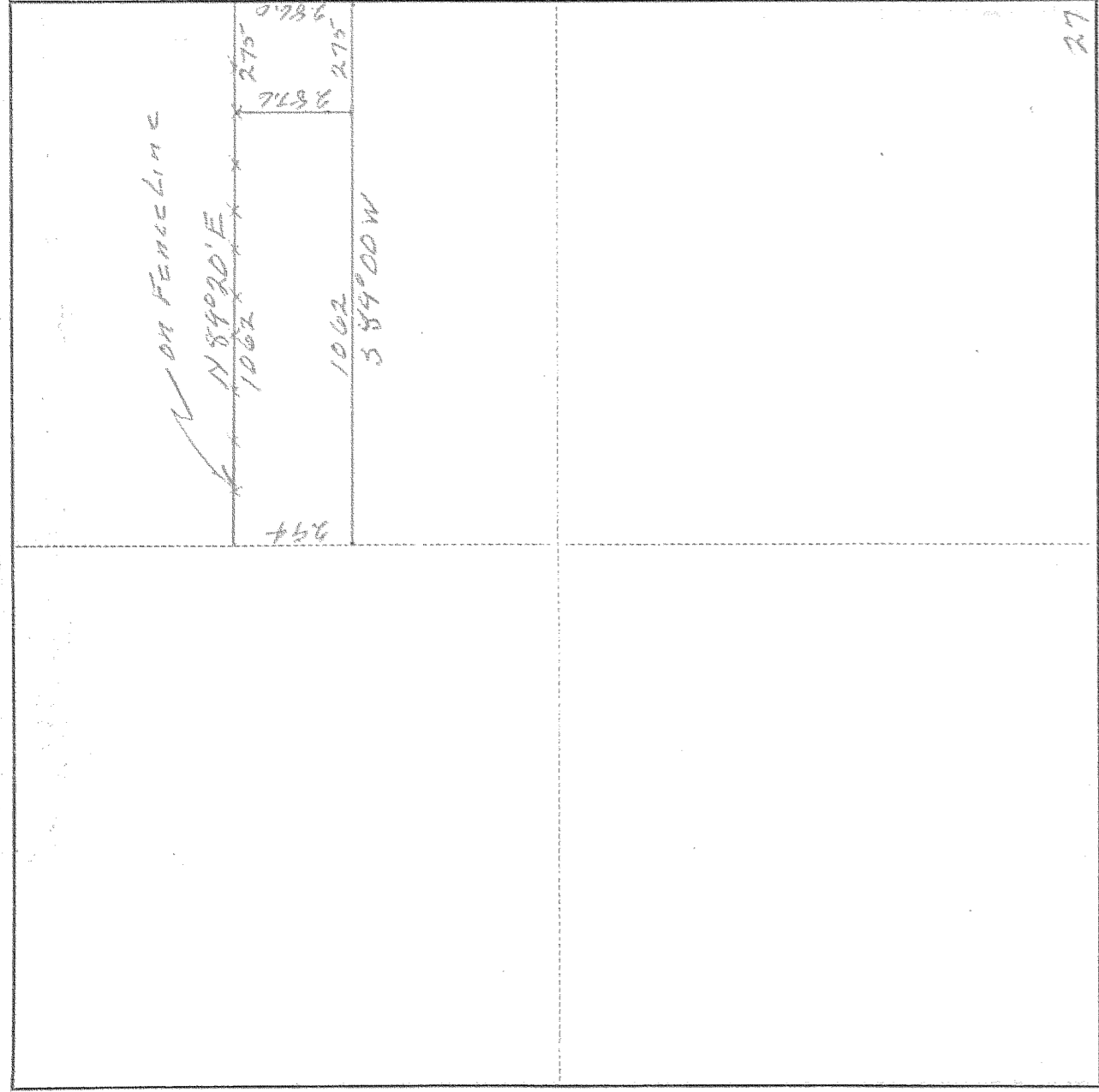


SURVEY IN NE 1/4 SECT 27, TWP. 2-A, RANGE 10, EAST W. M.

FOR Harry Rose

DATE Jan. 11/54



Scale 1 inch = 400

I do hereby certify that this sketch was made from notes taken during an actual survey by me on Jan 11 19 54, and that it correctly represents the field work of said survey.

William Rose
County Surveyor
Hood River County, Oregon

Helpers _____

WILLIAM ROSE

10-15 # 1505

FROM _____ TO- Harry Rose

Jan. 11, 1954

Beginning at the S.E. corner of the N.E. 1/4 of the S.E. 1/4 of Sec. 27, T-2-N., R-10-E., W.M. Thence North along Section line a distance of 485 ft., Thence S. 89° 00' W., a distance of 275 ft. to the point of true beginning of the property herein described, Thence S. 89° 00' W., a distance of 1062 ft. to the West line of said N.E. 1/4 of the S.E. 1/4, Thence North along said subdivisional line a distance of 294 ft., Thence N. 89° 20' E. a distance of 1062 ft., Thence South a distance of 287.6 ft. to the point of beginning. Containing 7.10 Acres.

Wm. Rose