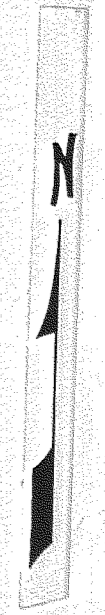


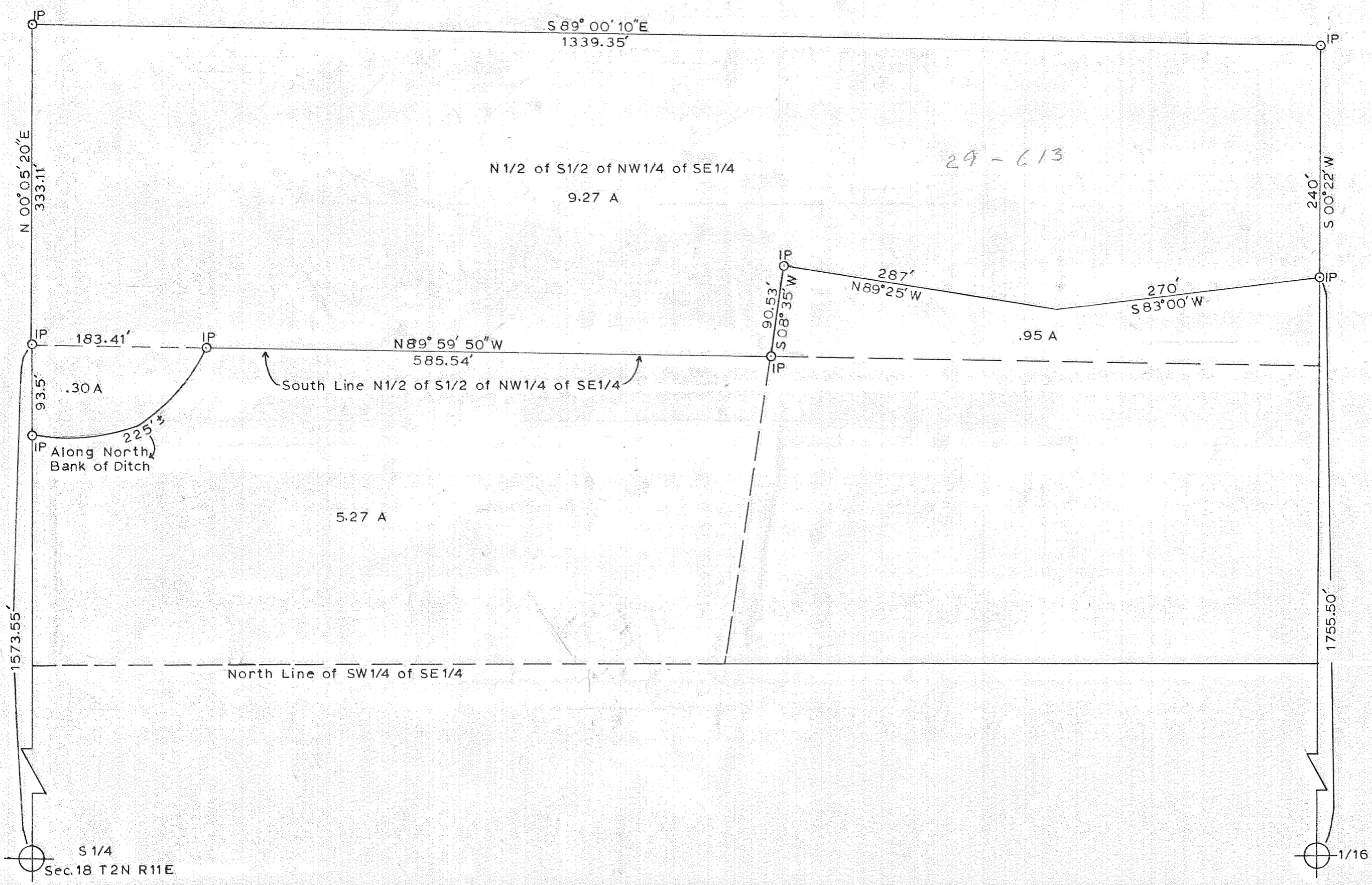
# PLAT OF SWYER PROPERTY

N 1/2 of S 1/2 of NW 1/4 of SE 1/4  
SEC. 18 T 2 N R 11 E  
COUNTY OF HOOD RIVER, OREGON  
APRIL 1966 - SCALE 1" = 100'



N 1/2 of S 1/2 of NW 1/4 of SE 1/4  
9.27 A

29-613



S 1/4  
Sec. 18 T 2 N R 11 E

1/16