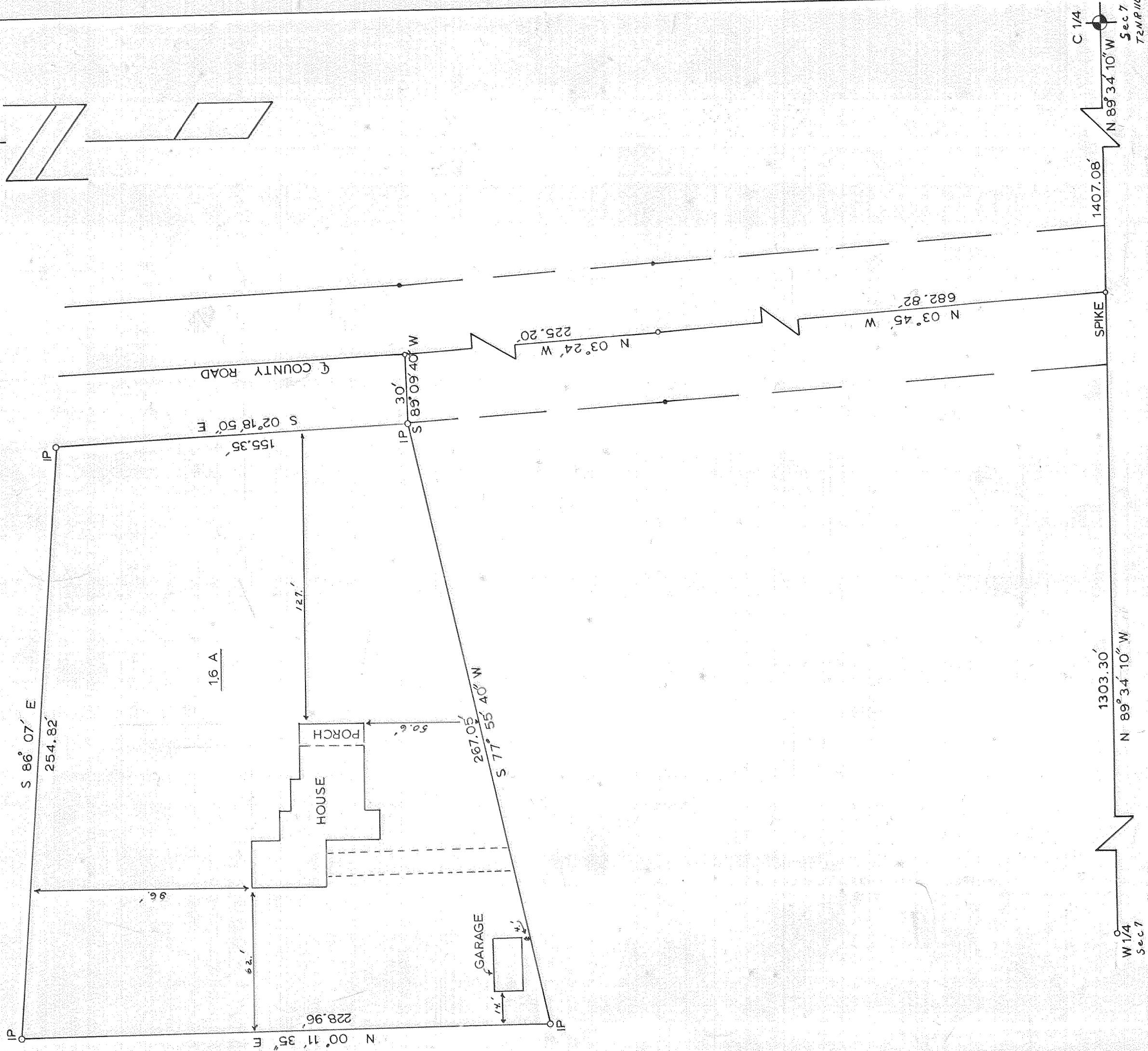


LOT IN THE SW1/4 NW1/4 SEC 7 T2N R1E WM  
HOOD RIVER COUNTY, OREGON

SCALE: 1in = 40ft

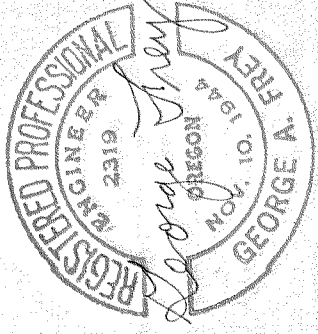
DATE: FEBRUARY 1967



8

I, George Frey, hereby certify that, except as shown on this plat, there are no easements, encroachments or overlaps upon these surveyed premises.

*George Frey*



W1/4  
Sec 7  
T2N R1E