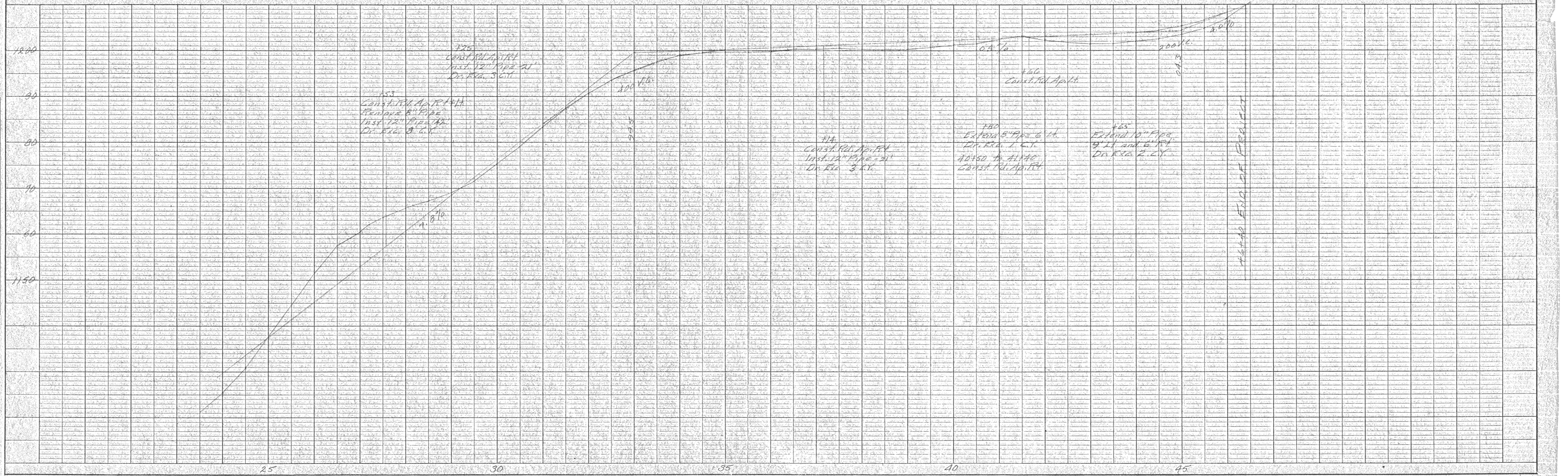
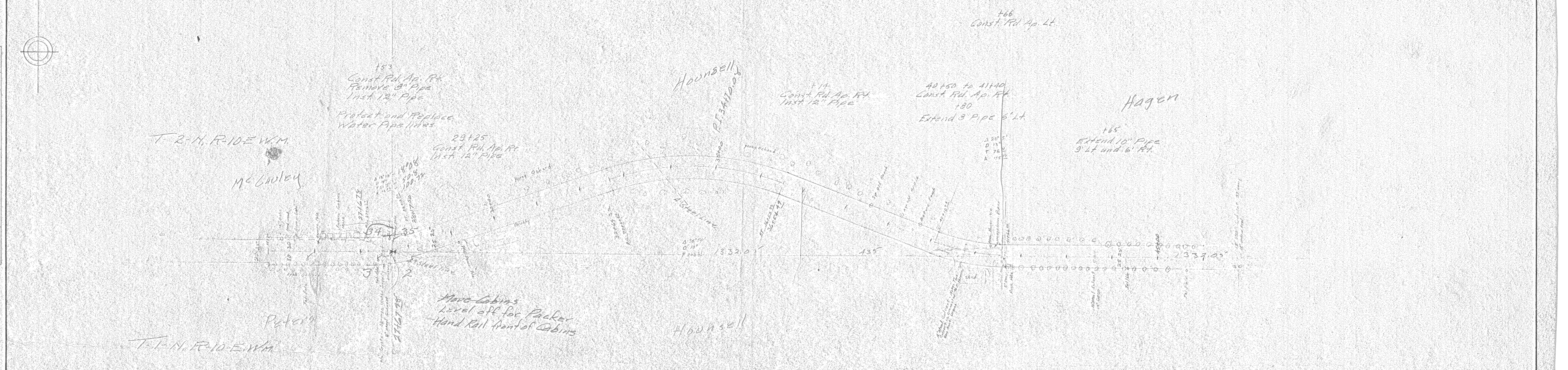


CENTRAL VALE ROAD HOOD RIVER COUNTY

Sheet 5 of 8

PLAN	BY	DATE
	NO.	
CHECKED	BY	DATE
	NO.	
	BY	DATE
	NO.	
APPROVED	BY	DATE
	NO.	
	BY	DATE
	NO.	

PROFILE	BY	DATE
	NO.	
CHECKED	BY	DATE
	NO.	
	BY	DATE
	NO.	
APPROVED	BY	DATE
	NO.	
	BY	DATE
	NO.	



Central Vale Road
2 of 2

PLAN

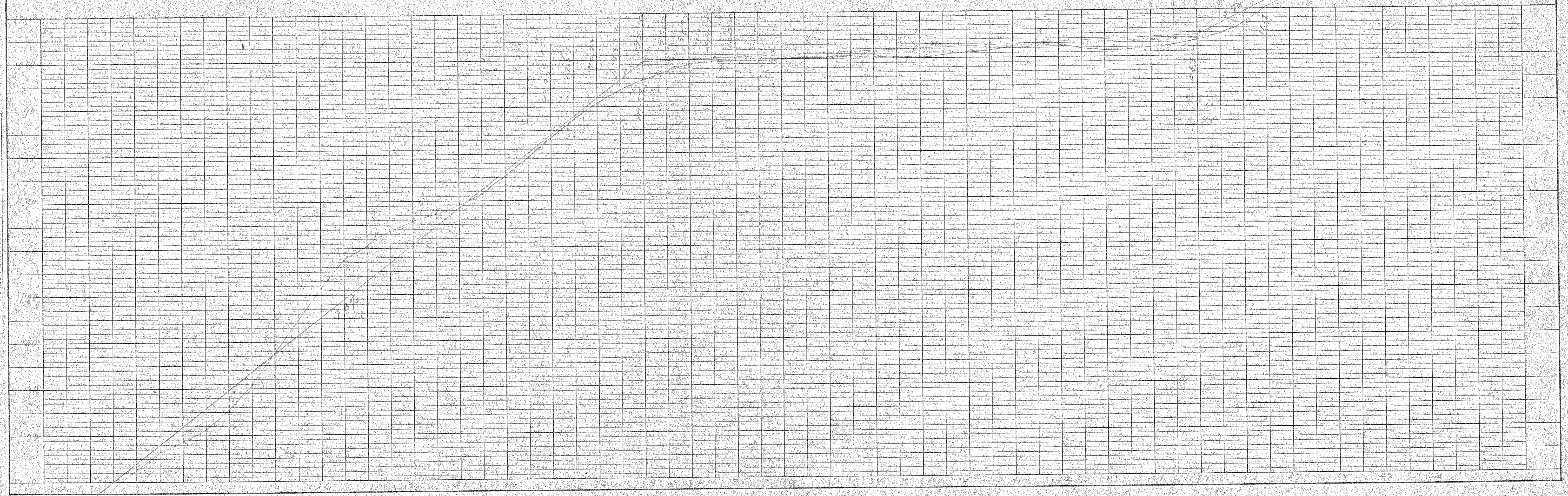
DATE	BY
DESIGNED	CHECKED
APPROVED	DATE
NO.	DATE

NOTE: ALL DIMENSIONS TO BE CHECKED BY THE CONTRACTOR.

PROFILE

DATE	BY
DESIGNED	CHECKED
APPROVED	DATE
NO.	DATE

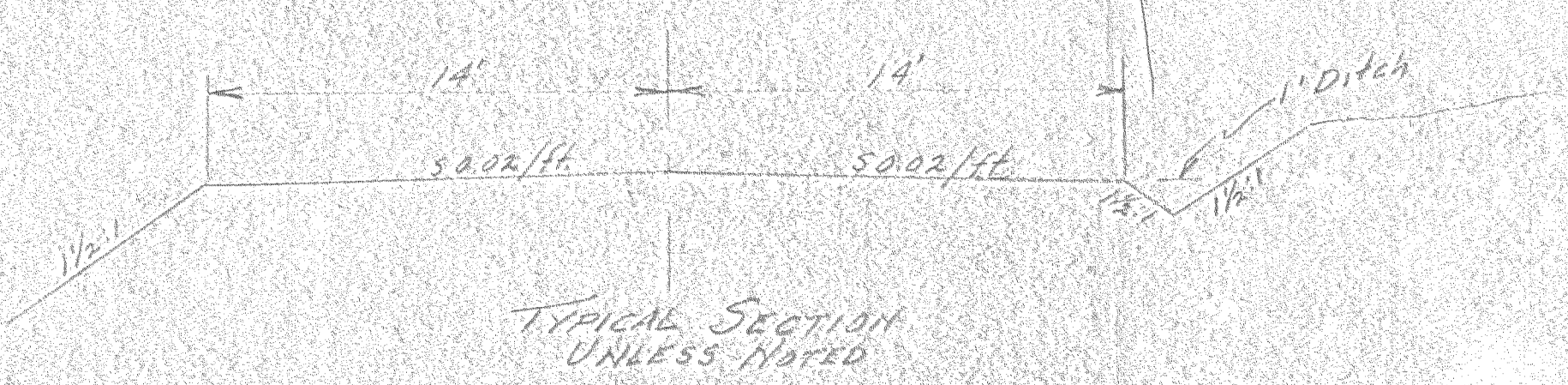
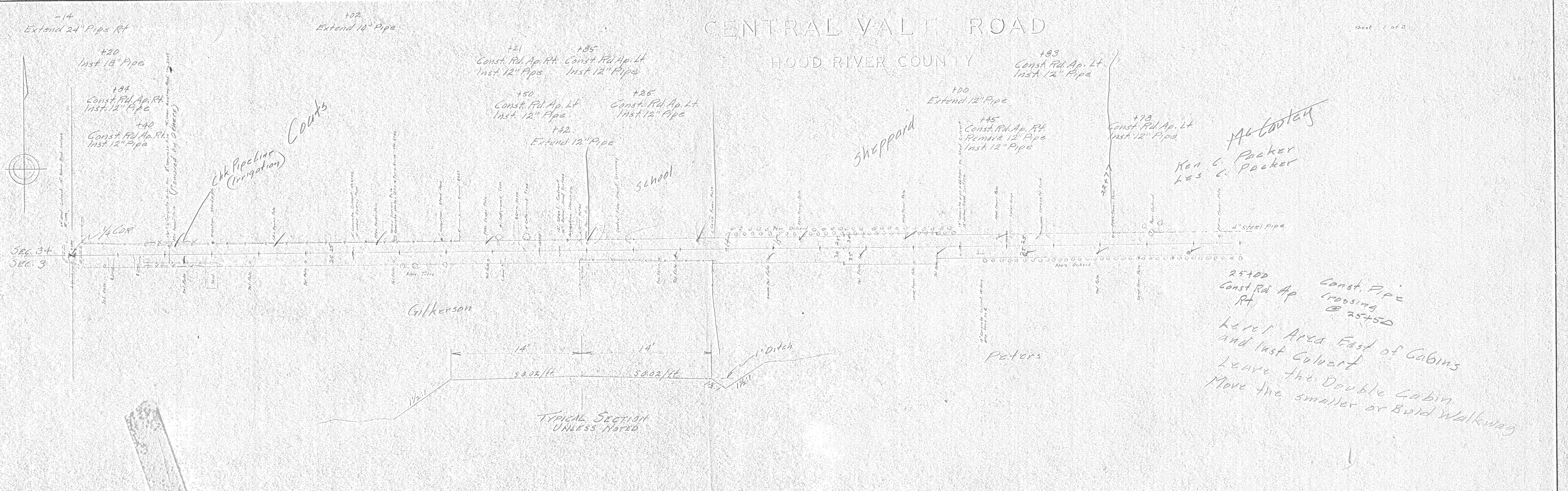
NOTE: ALL DIMENSIONS TO BE CHECKED BY THE CONTRACTOR.



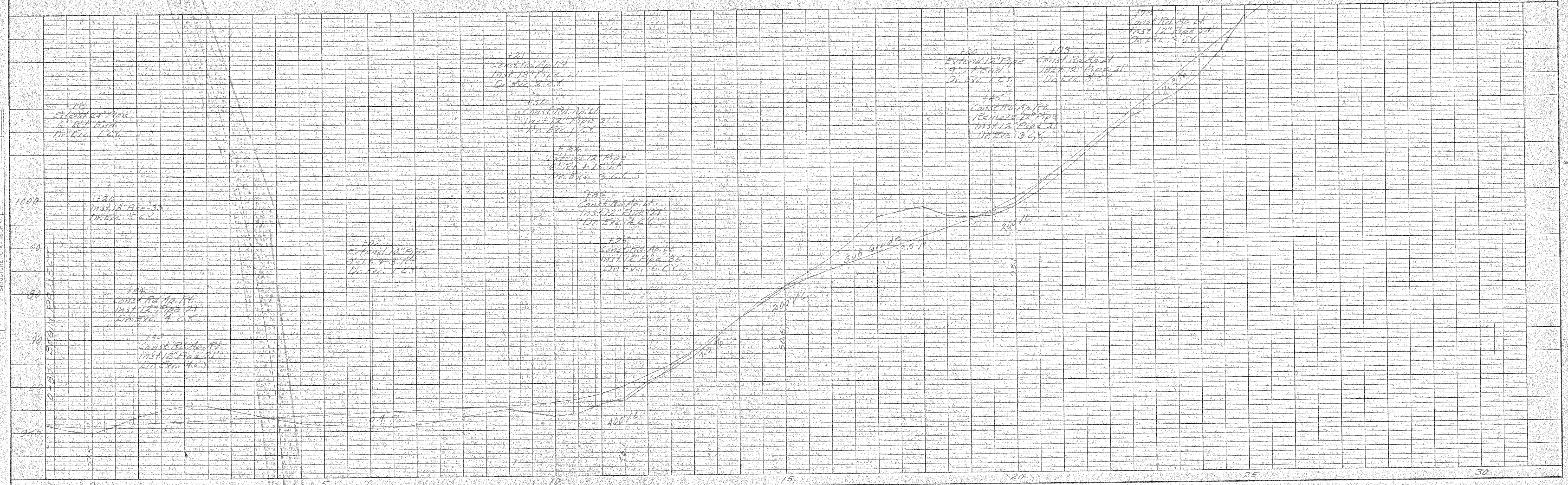
CENTRAL VALLEY ROAD

HOUD RIVER COUNTY

Sheet 1 of 2



25+00 Const. Rd. Ap. Rt. Const. Pipe crossing @ 25+50
 Local Area East of Cabins and Inst. Culvert
 Leave the Double Cabin
 Move the smaller or Bold Walkway



PLAN	DATE	BY	CHECKED

PROFILE	DATE	BY	CHECKED